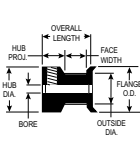
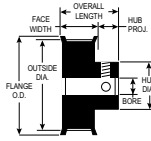


ALUMINUM WITH CLEAR ANODIZE (RoHS compliant)

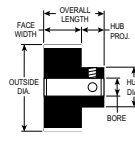
FOR BELTS UP TO 1/4" WIDE



TYPE 6FC



TYPE 6F



TYPE 6



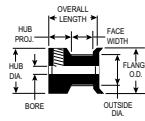
PART NUMBER	NO. OF GROOVES	PITCH DIA.	OUTSIDE DIA.	FLANGE O.D.	TYPE	BORE (+.001) (-.000)	FACE WIDTH	OVERALL LENGTH	HUB PROJ.	HUB DIA.	SET SCREWS
10MXL025-6A X 1/8	10	.255	.235	.425	6FC	1.250	.285	9/16	15/64	.425	4-40(1)
SAV-10MXL025-6A X 1/8	10	.255	.235	.425	6FC	1.250	.285	9/16	15/64	.425	4-40(1)
11MXL025-6A X 1/8	11	.280	.260	.450	6FC	1.250	.285	9/16	15/64	.450	4-40(1)
SAV-11MXL025-6A X 1/8	11	.280	.260	.450	6FC	1.250	.285	9/16	15/64	.450	4-40(1)
12MXL025-6A X 1/8	12	.306	.286	.480	6FC	1.250	.285	9/16	15/64	.480	4-40(1)
SAV-12MXL025-6A X 1/8	12	.306	.286	.480	6FC	1.250	.285	9/16	15/64	.480	4-40(1)
14MXL025-6A X 1/8	14	.357	.337	.530	6FC	1.250	.285	9/16	15/64	.530	4-40(1)
SAV-14MXL025-6A X 1/8	14	.357	.337	.530	6FC	1.250	.285	9/16	15/64	.530	4-40(1)
15MXL025-6A X 3/16	15	.382	.362	.555	6FC	1.875	.285	9/16	15/64	.555	6-40(1)
SAV-15MXL025-6A X 3/16	15	.382	.362	.555	6FC	1.875	.285	9/16	15/64	.555	6-40(1)
16MXL025-6A X 3/16	16	.407	.387	.580	6FC	1.875	.285	9/16	15/64	.580	6-40(1)
SAV-16MXL025-6A X 3/16	16	.407	.387	.580	6FC	1.875	.285	9/16	15/64	.580	6-40(1)
18MXL025-6A X 1/4	18	.458	.438	.635	6FC	2.500	.285	9/16	15/64	.635	6-40(2)
SAV-18MXL025-6A X 1/4	18	.458	.438	.635	6FC	2.500	.285	9/16	15/64	.635	6-40(2)
20MXL025-6A X 1/4	20	.509	.489	.685	6FC	2.500	.285	9/16	15/64	.685	6-40(2)
SAV-20MXL025-6A X 1/4	20	.509	.489	.685	6FC	2.500	.285	9/16	15/64	.685	6-40(2)
21MXL025-6A X 1/4	21	.535	.515	.710	6FC	2.500	.285	9/16	15/64	.710	6-40(2)
SAV-21MXL025-6A X 1/4	21	.535	.515	.710	6FC	2.500	.285	9/16	15/64	.710	6-40(2)
22MXL025-6A X 1/4	22	.560	.540	.740	6FC	2.500	.285	9/16	15/64	.740	6-40(2)
SAV-22MXL025-6A X 1/4	22	.560	.540	.740	6FC	2.500	.285	9/16	15/64	.740	6-40(2)
18MXL025-1A X 3/16	18	.458	.438	.635	6F	1.875	.389	5/8	15/64	.312	6-40(2)
SAV-18MXL025-1A X 3/16	18	.458	.438	.635	6F	1.875	.389	5/8	15/64	.312	6-40(2)
20MXL025-1A X 3/16	20	.509	.489	.685	6F	1.875	.389	5/8	15/64	.364	6-40(2)
SAV-20MXL025-1A X 3/16	20	.509	.489	.685	6F	1.875	.389	5/8	15/64	.364	6-40(2)
21MXL025-1A X 3/16	21	.535	.515	.710	6F	1.875	.389	5/8	15/64	.390	6-40(2)
SAV-21MXL025-1A X 3/16	21	.535	.515	.710	6F	1.875	.389	5/8	15/64	.390	6-40(2)
22MXL025-1A X 3/16	22	.560	.540	.740	6F	1.875	.389	5/8	15/64	.390	6-40(2)
SAV-22MXL025-1A X 3/16	22	.560	.540	.740	6F	1.875	.389	5/8	15/64	.390	6-40(2)
24MXL025-1A X 1/4	24	.611	.591	.790	6F	2.500	.389	11/16	19/64	.442	6-40(2)
SAV-24MXL025-1A X 1/4	24	.611	.591	.790	6F	2.500	.389	11/16	19/64	.442	6-40(2)
28MXL025-1A X 1/4	28	.713	.693	.895	6F	2.500	.389	11/16	19/64	.494	6-40(2)
SAV-28MXL025-1A X 1/4	28	.713	.693	.895	6F	2.500	.389	11/16	19/64	.494	6-40(2)
30MXL025-1A X 1/4	30	.764	.744	.945	6F	2.500	.389	11/16	19/64	.546	8-32(2)
SAV-30MXL025-1A X 1/4	30	.764	.744	.945	6F	2.500	.389	11/16	19/64	.546	8-32(2)
32MXL025-1A X 1/4	32	.815	.795	1.000	6F	2.500	.389	11/16	19/64	.598	8-32(2)
SAV-32MXL025-1A X 1/4	32	.815	.795	1.000	6F	2.500	.389	11/16	19/64	.598	8-32(2)

“SAV-” in front of any standard timing pulley part # represents the Shaft-Saver version. Shaft-Saver pulleys have special setscrews that grip without damage to the shaft and allow easy pulley removal and realignment. For additional information, see our Shaft-Saver Engineering Section.

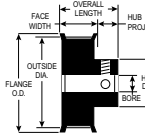


ALUMINUM WITH CLEAR ANODIZE (RoHS compliant)

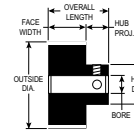
FOR BELTS UP TO 1/4" WIDE



TYPE 6FC



TYPE 6F



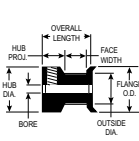
TYPE 6

PART NUMBER	NO. OF GROOVES	PITCH DIA.	OUTSIDE DIA.	FLANGE O.D.	BORE TYPE	BORE (+.001) (-.000)	FACE WIDTH	OVERALL LENGTH	HUB PROJ.	HUB DIA.	SET SCREWS
36MXL025-1A X 1/4	36	.917	.897	1.105	6F	.2500	.389	11/16	19/64	.676	8-32(2)
SAV-36MXL025-1A X 1/4	36	.917	.897	1.105	6F	.2500	.389	11/16	19/64	.676	8-32(2)
40MXL025-1A X 1/4	40	1.019	.999	1.210	6F	.2500	.405	23/32	5/16	.754	8-32(2)
SAV-40MXL025-1A X 1/4	40	1.019	.999	1.210	6F	.2500	.405	23/32	5/16	.754	8-32(2)
42MXL025-1A X 1/4	42	1.070	1.050	1.260	6F	.2500	.405	23/32	5/16	.806	8-32(2)
SAV-42MXL025-1A X 1/4	42	1.070	1.050	1.260	6F	.2500	.405	23/32	5/16	.806	8-32(2)
44MXL025-1A X 1/4	44	1.120	1.100	1.315	6F	.2500	.405	23/32	5/16	.858	8-32(2)
SAV-44MXL025-1A X 1/4	44	1.120	1.100	1.315	6F	.2500	.405	23/32	5/16	.858	8-32(2)
48MXL025-1A X 1/4	48	1.222	1.202	1.420	6F	.2500	.405	23/32	5/16	.936	8-32(2)
SAV-48MXL025-1A X 1/4	48	1.222	1.202	1.420	6F	.2500	.405	23/32	5/16	.936	8-32(2)
60MXL025-1A X 1/4	60	1.528	1.508	1.730	6F	.2500	.405	23/32	5/16	1.222	8-32(2)
SAV-60MXL025-1A X 1/4	60	1.528	1.508	1.730	6F	.2500	.405	23/32	5/16	1.222	8-32(2)
60MXL025-2A X 1/4	60	1.528	1.508	—	6	.2500	.375	3/4	3/8	1.148	8-32(2)
SAV-60MXL025-2A X 1/4	60	1.528	1.508	—	6	.2500	.375	3/4	3/8	1.148	8-32(2)
72MXL025-2A X 1/4	72	1.833	1.813	—	6	.2500	.375	3/4	3/8	1.195	8-32(2)
SAV-72MXL025-2A X 1/4	72	1.833	1.813	—	6	.2500	.375	3/4	3/8	1.195	8-32(2)
80MXL025-2A X 5/16	80	2.037	2.017	—	6	.3125	.375	3/4	3/8	1.500	8-32(2)
SAV-80MXL025-2A X 5/16	80	2.037	2.017	—	6	.3125	.375	3/4	3/8	1.500	8-32(2)
90MXL025-2A X 5/16	90	2.292	2.272	—	6	.3125	.375	3/4	3/8	1.500	8-32(2)
SAV-90MXL025-2A X 5/16	90	2.292	2.272	—	6	.3125	.375	3/4	3/8	1.500	8-32(2)
100MXL025-2A X 5/16	100	2.546	2.526	—	6	.3125	.375	3/4	3/8	1.500	8-32(2)
SAV-100MXL025-2A X 5/16	100	2.546	2.526	—	6	.3125	.375	3/4	3/8	1.500	8-32(2)
120MXL025-2A X 3/8	120	3.056	3.036	—	6	.3750	.375	3/4	3/8	1.500	10-32(2)
SAV-120MXL025-2A X 3/8	120	3.056	3.036	—	6	.3750	.375	3/4	3/8	1.500	10-32(2)

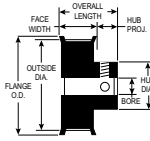
“SAV-” in front of any standard timing pulley part # represents the Shaft-Saver version. Shaft-Saver pulleys have special setscrews that grip without damage to the shaft and allow easy pulley removal and realignment. For additional information, see our Shaft-Saver Engineering Section.

ALUMINUM WITH CLEAR ANODIZE (RoHS compliant)

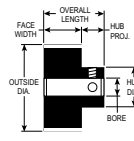
FOR BELTS UP TO 3/8" WIDE



TYPE 6FC



TYPE 6F



TYPE 6



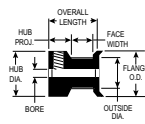
PART NUMBER	NO. OF GROOVES	PITCH DIA.	OUTSIDE DIA.	FLANGE O.D.	TYPE	BORE (+.001 / -.000)	FACE WIDTH	OVERALL LENGTH	HUB PROJ.	HUB DIA.	SET SCREWS
10MXL037-6A X 1/8	10	.255	.235	.425	6FC	1.250	.410	11/16	15/64	.425	4-40(1)
SAV-10MXL037-6A X 1/8	10	.255	.235	.425	6FC	1.250	.410	11/16	15/64	.425	4-40(1)
11MXL037-6A X 1/8	11	.280	.260	.450	6FC	1.250	.410	11/16	15/64	.450	4-40(1)
SAV-11MXL037-6A X 1/8	11	.280	.260	.450	6FC	1.250	.410	11/16	15/64	.450	4-40(1)
12MXL037-6A X 1/8	12	.306	.286	.480	6FC	1.250	.410	11/16	15/64	.480	4-40(1)
SAV-12MXL037-6A X 1/8	12	.306	.286	.480	6FC	1.250	.410	11/16	15/64	.480	4-40(1)
14MXL037-6A X 1/8	14	.357	.337	.530	6FC	1.250	.410	11/16	15/64	.530	4-40(1)
SAV-14MXL037-6A X 1/8	14	.357	.337	.530	6FC	1.250	.410	11/16	15/64	.530	4-40(1)
15MXL037-6A X 3/16	15	.382	.362	.555	6FC	1.875	.410	11/16	15/64	.555	6-40(1)
SAV-15MXL037-6A X 3/16	15	.382	.362	.555	6FC	1.875	.410	11/16	15/64	.555	6-40(1)
16MXL037-6A X 3/16	16	.407	.387	.580	6FC	1.875	.410	11/16	15/64	.580	6-40(1)
SAV-16MXL037-6A X 3/16	16	.407	.387	.580	6FC	1.875	.410	11/16	15/64	.580	6-40(1)
18MXL037-6A X 1/4	18	.458	.438	.635	6FC	2.500	.410	11/16	15/64	.635	6-40(2)
SAV-18MXL037-6A X 1/4	18	.458	.438	.635	6FC	2.500	.410	11/16	15/64	.635	6-40(2)
20MXL037-6A X 1/4	20	.509	.489	.685	6FC	2.500	.410	11/16	15/64	.685	6-40(2)
SAV-20MXL037-6A X 1/4	20	.509	.489	.685	6FC	2.500	.410	11/16	15/64	.685	6-40(2)
21MXL037-6A X 1/4	21	.535	.515	.710	6FC	2.500	.410	11/16	15/64	.710	6-40(2)
SAV-21MXL037-6A X 1/4	21	.535	.515	.710	6FC	2.500	.410	11/16	15/64	.710	6-40(2)
22MXL037-6A X 1/4	22	.560	.540	.740	6FC	2.500	.410	11/16	15/64	.740	6-40(2)
SAV-22MXL037-6A X 1/4	22	.560	.540	.740	6FC	2.500	.410	11/16	15/64	.740	6-40(2)
18MXL037-1A X 3/16	18	.458	.438	.635	6F	1.875	.514	3/4	15/64	.312	6-40(2)
SAV-18MXL037-1A X 3/16	18	.458	.438	.635	6F	1.875	.514	3/4	15/64	.312	6-40(2)
20MXL037-1A X 3/16	20	.509	.489	.685	6F	1.875	.514	3/4	15/64	.364	6-40(2)
SAV-20MXL037-1A X 3/16	20	.509	.489	.685	6F	1.875	.514	3/4	15/64	.364	6-40(2)
21MXL037-1A X 3/16	21	.535	.515	.710	6F	1.875	.514	3/4	15/64	.390	6-40(2)
SAV-21MXL037-1A X 3/16	21	.535	.515	.710	6F	1.875	.514	3/4	15/64	.390	6-40(2)
22MXL037-1A X 3/16	22	.560	.540	.740	6F	1.875	.514	3/4	15/64	.390	6-40(2)
SAV-22MXL037-1A X 3/16	22	.560	.540	.740	6F	1.875	.514	3/4	15/64	.390	6-40(2)
24MXL037-1A X 1/4	24	.611	.591	.790	6F	2.500	.514	13/16	19/64	.442	6-40(2)
SAV-24MXL037-1A X 1/4	24	.611	.591	.790	6F	2.500	.514	13/16	19/64	.442	6-40(2)
28MXL037-1A X 1/4	28	.713	.693	.895	6F	2.500	.514	13/16	19/64	.494	6-40(2)
SAV-28MXL037-1A X 1/4	28	.713	.693	.895	6F	2.500	.514	13/16	19/64	.494	6-40(2)
30MXL037-1A X 1/4	30	.764	.744	.945	6F	2.500	.514	13/16	19/64	.546	8-32(2)
SAV-30MXL037-1A X 1/4	30	.764	.744	.945	6F	2.500	.514	13/16	19/64	.546	8-32(2)
32MXL037-1A X 1/4	32	.815	.795	1.000	6F	2.500	.514	13/16	19/64	.598	8-32(2)
SAV-32MXL037-1A X 1/4	32	.815	.795	1.000	6F	2.500	.514	13/16	19/64	.598	8-32(2)

“SAV-” in front of any standard timing pulley part # represents the Shaft-Saver version. Shaft-Saver pulleys have special setscrews that grip without damage to the shaft and allow easy pulley removal and realignment. For additional information, see our Shaft-Saver Engineering Section.

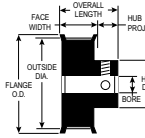


ALUMINUM WITH CLEAR ANODIZE (RoHS compliant)

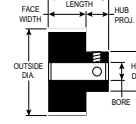
FOR BELTS UP TO 3/8" WIDE



TYPE 6FC



TYPE 6F

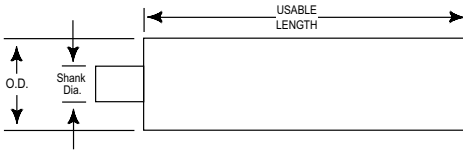


TYPE 6

PART NUMBER	NO. OF GROOVES	PITCH DIA.	OUTSIDE DIA.	FLANGE O.D.	BORE TYPE	BORE (+.001 / -.000)	FACE WIDTH	OVERALL LENGTH	HUB PROJ.	HUB DIA.	SET SCREWS
36MXL037-1A X 1/4	36	.917	.897	1.105	6F	.2500	.514	13/16	19/64	.676	8-32(2)
SAV-36MXL037-1A X 1/4	36	.917	.897	1.105	6F	.2500	.514	13/16	19/64	.676	8-32(2)
40MXL037-1A X 1/4	40	1.019	.999	1.210	6F	.2500	.530	27/32	5/16	.754	8-32(2)
SAV-40MXL037-1A X 1/4	40	1.019	.999	1.210	6F	.2500	.530	27/32	5/16	.754	8-32(2)
42MXL037-1A X 1/4	42	1.070	1.050	1.260	6F	.2500	.530	27/32	5/16	.806	8-32(2)
SAV-42MXL037-1A X 1/4	42	1.070	1.050	1.260	6F	.2500	.530	27/32	5/16	.806	8-32(2)
44MXL037-1A X 1/4	44	1.120	1.100	1.315	6F	.2500	.530	27/32	5/16	.858	8-32(2)
SAV-44MXL037-1A X 1/4	44	1.120	1.100	1.315	6F	.2500	.530	27/32	5/16	.858	8-32(2)
48MXL037-1A X 1/4	48	1.222	1.202	1.420	6F	.2500	.530	27/32	5/16	.936	8-32(2)
SAV-48MXL037-1A X 1/4	48	1.222	1.202	1.420	6F	.2500	.530	27/32	5/16	.936	8-32(2)
60MXL037-1A X 1/4	60	1.528	1.508	1.730	6F	.2500	.530	27/32	5/16	1.222	8-32(2)
SAV-60MXL037-1A X 1/4	60	1.528	1.508	1.730	6F	.2500	.530	27/32	5/16	1.222	8-32(2)
60MXL037-2A X 1/4	60	1.528	1.508	—	6	.2500	.500	7/8	3/8	1.148	8-32(2)
SAV-60MXL037-2A X 1/4	60	1.528	1.508	—	6	.2500	.500	7/8	3/8	1.148	8-32(2)
72MXL037-2A X 1/4	72	1.833	1.813	—	6	.2500	.500	7/8	3/8	1.195	8-32(2)
SAV-72MXL037-2A X 1/4	72	1.833	1.813	—	6	.2500	.500	7/8	3/8	1.195	8-32(2)
80MXL037-2A X 5/16	80	2.037	2.017	—	6	.3125	.500	7/8	3/8	1.500	8-32(2)
SAV-80MXL037-2A X 5/16	80	2.037	2.017	—	6	.3125	.500	7/8	3/8	1.500	8-32(2)
90MXL037-2A X 5/16	90	2.292	2.272	—	6	.3125	.500	7/8	3/8	1.500	8-32(2)
SAV-90MXL037-2A X 5/16	90	2.292	2.272	—	6	.3125	.500	7/8	3/8	1.500	8-32(2)
100MXL037-2A X 5/16	100	2.546	2.526	—	6	.3125	.500	7/8	3/8	1.500	8-32(2)
SAV-100MXL037-2A X 5/16	100	2.546	2.526	—	6	.3125	.500	7/8	3/8	1.500	8-32(2)
120MXL037-2A X 3/8	120	3.056	3.036	—	6	.3750	.500	7/8	3/8	1.500	10-32(2)
SAV-120MXL037-2A X 3/8	120	3.056	3.036	—	6	.3750	.500	7/8	3/8	1.500	10-32(2)

“SAV-” in front of any standard timing pulley part # represents the Shaft-Saver version. Shaft-Saver pulleys have special setscrews that grip without damage to the shaft and allow easy pulley removal and realignment. For additional information, see our Shaft-Saver Engineering Section.

ALUMINUM 6061-T6 (RoHS compliant)

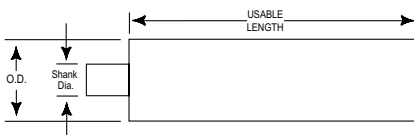
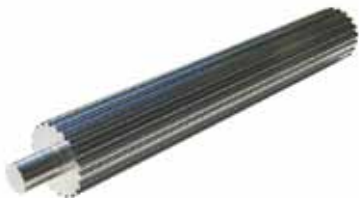


PART NUMBER	NO. OF GROOVES	PITCH DIA.	OUTSIDE DIA.	SHANK DIA.	USEABLE LENGTH
10MXL-P-2A	10	.255	.235	5/16	2"
11MXL-P-2A	11	.280	.260	5/16	2"
12MXL-P-2A	12	.306	.286	5/16	2"
13MXL-P-2A	13	.331	.311	3/8	2"
14MXL-P-3A	14	.357	.337	3/8	3"
15MXL-P-3A	15	.382	.362	7/16	3"
16MXL-P-3A	16	.407	.387	7/16	3"
17MXL-P-3A	17	.433	.413	7/16	3"
18MXL-P-3A	18	.458	.438	1/2	3"
19MXL-P-3A	19	.484	.464	1/2	3"
20MXL-P-4A	20	.509	.489	3/8	4"
21MXL-P-4A	21	.535	.515	3/8	4"
22MXL-P-4A	22	.560	.540	3/8	4"
23MXL-P-4A	23	.586	.566	3/8	4"
24MXL-P-5A	24	.611	.591	1/2	5"
25MXL-P-5A	25	.637	.617	1/2	5"
26MXL-P-5A	26	.662	.642	1/2	5"
27MXL-P-5A	27	.687	.667	1/2	5"
28MXL-P-5A	28	.713	.693	1/2	5"
29MXL-P-5A	29	.738	.718	1/2	5"
30MXL-P-6A	30	.764	.744	1/2	6"
31MXL-P-6A	31	.789	.769	1/2	6"
32MXL-P-6A	32	.815	.795	1/2	6"
33MXL-P-6A	33	.840	.820	1/2	6"
34MXL-P-6A	34	.866	.846	1/2	6"
35MXL-P-6A	35	.891	.871	1/2	6"
36MXL-P-6A	36	.917	.897	1/2	6"
37MXL-P-6A	37	.942	.922	1/2	6"
38MXL-P-6A	38	.968	.948	1/2	6"
39MXL-P-6A	39	.993	.973	1/2	6"

York also manufactures custom pulleys and complete assemblies
 email: support@york-ind.com web: www.york-ind.com

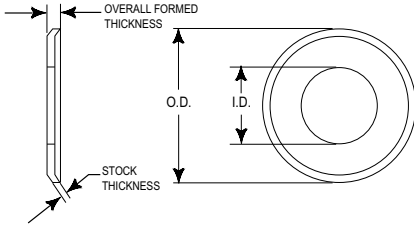


ALUMINUM 6061-T6 (RoHS compliant)



PART NUMBER	NO. OF GROOVES	PITCH DIA.	OUTSIDE DIA.	SHANK DIA.	USEABLE LENGTH
40MXL-P-7A	40	1.019	.999	1/2	7"
42MXL-P-7A	42	1.070	1.050	1/2	7"
44MXL-P-7A	44	1.120	1.100	1/2	7"
45MXL-P-7A	45	1.146	1.126	1/2	7"
48MXL-P-7A	48	1.222	1.202	1/2	7"
50MXL-P-7A	50	1.273	1.253	1/2	7"
51MXL-P-7A	51	1.299	1.279	1/2	7"
52MXL-P-7A	52	1.324	1.304	1/2	7"
54MXL-P-7A	54	1.375	1.355	1/2	7"
55MXL-P-7A	55	1.401	1.381	1/2	7"
56MXL-P-7A	56	1.426	1.406	1/2	7"
57MXL-P-7A	57	1.451	1.431	1/2	7"
60MXL-P-8A	60	1.528	1.508	1/2	8"
64MXL-P-8A	64	1.630	1.610	1/2	8"
65MXL-P-8A	65	1.655	1.635	1/2	8"
66MXL-P-8A	66	1.681	1.661	1/2	8"
70MXL-P-8A	70	1.783	1.763	1/2	8"
72MXL-P-8A	72	1.833	1.813	1/2	8"
75MXL-P-8A	75	1.910	1.890	1/2	8"
80MXL-P-8A	80	2.037	2.017	3/4	8"
82MXL-P-8A	82	2.088	2.068	3/4	8"
84MXL-P-8A	84	2.139	2.119	3/4	8"
88MXL-P-8A	88	2.241	2.221	3/4	8"
90MXL-P-8A	90	2.292	2.272	3/4	8"
96MXL-P-8A	96	2.445	2.425	3/4	8"
98MXL-P-8A	98	2.496	2.476	3/4	8"
100MXL-P-8A	100	2.546	2.526	3/4	8"
102MXL-P-8A	102	2.597	2.577	3/4	8"
108MXL-P-8A	108	2.750	2.730	3/4	8"
110MXL-P-8A	110	2.801	2.781	3/4	8"
120MXL-P-8A	120	3.056	3.036	3/4	8"
130MXL-P-8A	130	3.310	3.290	3/4	8"
140MXL-P-8A	140	3.565	3.545	3/4	8"
150MXL-P-8A	150	3.820	3.800	3/4	8"

ALUMINUM (RoHS compliant)

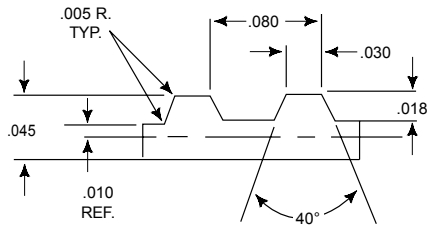


PART NUMBER	INSIDE DIA.	OUTSIDE DIA.	STOCK THICKNESS	OVERALL FORMED THICKNESS
10M-F1A	.188	.425	.025	.045
11M-F1A	.214	.450	.025	.045
12M-F1A	.218	.480	.025	.045
13M-F1A	.244	.505	.025	.045
14M-F1A	.270	.530	.025	.045
15M-F1A	.296	.555	.025	.045
16M-F1A	.322	.580	.025	.045
18M-F1A	.374	.635	.032	.052
20M-F1A	.426	.685	.032	.052
21M-F1A	.452	.710	.032	.052
22M-F1A	.452	.740	.032	.052
24M-F1A	.504	.790	.032	.052
25M-F1A	.530	.815	.032	.052
26M-F1A	.556	.840	.032	.052
28M-F1A	.574	.895	.032	.052
30M-F1A	.626	.945	.032	.052
32M-F1A	.678	1.000	.032	.052
33M-F1A	.704	1.025	.032	.052
34M-F1A	.722	1.050	.032	.052
35M-F1A	.748	1.080	.032	.052
36M-F1A	.774	1.105	.032	.052
38M-F1A	.826	1.155	.032	.052
40M-F1A	.874	1.210	.040	.060
42M-F1A	.926	1.260	.040	.060
44M-F1A	.978	1.315	.040	.060
45M-F1A	1.004	1.340	.040	.060
48M-F1A	1.058	1.420	.040	.060
50M-F1A	1.110	1.470	.040	.060
54M-F1A	1.200	1.575	.040	.060
60M-F1A	1.356	1.730	.040	.060



BLACK NEOPRENE, Fiberglass Cord (RoHS compliant)

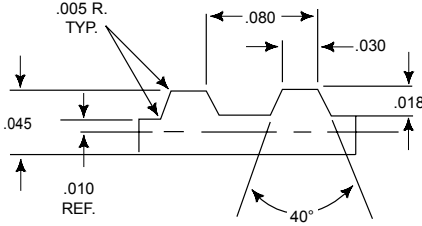
If you don't see the belt you need – call York!



BELT NUMBER	1/8"	WIDTHS 3/16"	1/4"	PITCH LENGTH	NO. OF TEETH	BELT NUMBER	1/8"	WIDTHS 3/16"	1/4"	PITCH LENGTH	NO. OF TEETH
29MXL	012	019	025	2.88	36	70MXL	012	019	025	7.04	88
32MXL	012	019	025	3.20	40	72MXL	012	019	025	7.20	90
34MXL	012	019	025	3.36	42	73MXL	012	019	025	7.36	92
36MXL	012	019	025	3.60	45	74MXL	012	019	025	7.44	93
40MXL	012	019	025	4.00	50	75MXL	012	019	025	7.52	94
42MXL	012	019	025	4.24	53	76MXL	012	019	025	7.60	95
43MXL	012	019	025	4.30	54	78MXL	012	019	025	7.76	97
44MXL	012	019	025	4.40	55	80MXL	012	019	025	8.00	100
45MXL	012	019	025	4.48	56	81MXL	012	019	025	8.08	101
46MXL	012	019	025	4.64	58	82MXL	012	019	025	8.16	102
47MXL	012	019	025	4.72	59	84MXL	012	019	025	8.40	105
48MXL	012	019	025	4.80	60	85MXL	012	019	025	8.48	106
49MXL	012	019	025	4.88	61	86MXL	012	019	025	8.56	107
50MXL	012	019	025	5.04	63	87MXL	012	019	025	8.72	109
51MXL	012	019	025	5.12	64	88MXL	012	019	025	8.80	110
52MXL	012	019	025	5.20	65	90MXL	012	019	025	8.96	112
53MXL	012	019	025	5.36	67	91MXL	012	019	025	9.12	114
54MXL	012	019	025	5.44	68	94MXL	012	019	025	9.44	118
55MXL	012	019	025	5.52	69	96MXL	012	019	025	9.60	120
56MXL	012	019	025	5.60	70	97MXL	012	019	025	9.76	122
57MXL	012	019	025	5.68	71	98MXL	012	019	025	9.84	123
58MXL-U	012	019	025	5.76	72	100MXL	012	019	025	10.00	125
58MXL-D	012	019	025	5.84	73	101MXL	012	019	025	10.08	126
60MXL	012	019	025	6.00	75	102MXL	012	019	025	10.16	127
61MXL	012	019	025	6.08	76	103MXL	012	019	025	10.32	129
62MXL	012	019	025	6.16	77	104MXL	012	019	025	10.40	130
63MXL	012	019	025	6.32	79	106MXL	012	019	025	10.56	132
64MXL	012	019	025	6.40	80	107MXL	012	019	025	10.72	134
64MXL-D	012	019	025	6.48	81	111MXL	012	019	025	11.12	139
65MXL	012	019	025	6.56	82	112MXL	012	019	025	11.20	140
66MXL	012	019	025	6.64	83	115MXL	012	019	025	11.52	144
67MXL	012	019	025	6.72	84	116MXL	012	019	025	11.60	145
68MXL	012	019	025	6.80	85	120MXL	012	019	025	12.00	150
69MXL	012	019	025	6.96	87	122MXL	012	019	025	12.24	153

BLACK NEOPRENE, Fiberglass Cord (RoHS compliant)

Need a clean, low dust belt? See TruMotion belts

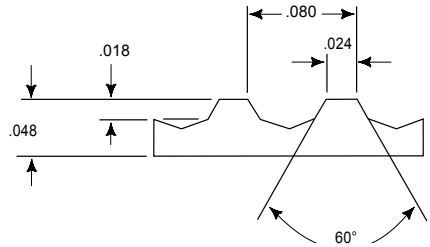


BELT NUMBER	1/8"	WIDTHS 3/16"	1/4"	PITCH LENGTH	NO. OF TEETH	BELT NUMBER	1/8"	WIDTHS 3/16"	1/4"	PITCH LENGTH	NO. OF TEETH
124MXL	012	019	025	12.40	155	240MXL	012	019	025	24.00	300
126MXL	012	019	025	12.64	158	252MXL	012	019	025	25.20	315
128MXL	012	019	025	12.80	160	254MXL	012	019	025	25.44	318
132MXL	012	019	025	13.20	165	274MXL	012	019	025	27.44	343
133MXL	012	019	025	13.28	166	277MXL	012	019	025	27.76	347
136MXL	012	019	025	13.60	170	286MXL	012	019	025	28.64	358
140MXL	012	019	025	14.00	175	288MXL	012	019	025	28.80	360
144MXL	012	019	025	14.40	180	297MXL	012	019	025	29.68	371
147MXL	012	019	025	14.72	184	298MXL	012	019	025	29.76	372
152MXL	012	019	025	15.20	190	312MXL	012	019	025	31.20	390
156MXL	012	019	025	15.60	195	320MXL	012	019	025	32.00	400
160MXL	012	019	025	16.00	200	326MXL	012	019	025	32.64	408
166MXL	012	019	025	16.64	208	330MXL	012	019	025	32.96	412
168MXL	012	019	025	16.80	210	336MXL	012	019	025	33.60	420
170MXL	012	019	025	16.96	212	339MXL	012	019	025	33.92	424
177MXL	012	019	025	17.68	221	340MXL	012	019	025	34.00	425
178MXL	012	019	025	17.76	222	345MXL	012	019	025	34.48	431
180MXL	012	019	025	18.00	225	347MXL	012	019	025	34.72	434
183MXL	012	019	025	18.32	229	348MXL	012	019	025	34.80	435
184MXL	012	019	025	18.40	230	352MXL	012	019	025	35.20	440
186MXL	012	019	025	18.56	232	362MXL	012	019	025	36.24	453
188MXL	012	019	025	18.80	235	370MXL	012	019	025	37.04	463
196MXL	012	019	025	19.60	245	380MXL	012	019	025	38.00	475
198MXL	012	019	025	19.84	248	389MXL	012	019	025	38.96	487
199MXL	012	019	025	19.92	249	390MXL	012	019	025	39.04	488
200MXL	012	019	025	20.00	250	398MXL	012	019	025	39.84	498
201MXL	012	019	025	20.08	251	400MXL	012	019	025	40.00	500
205MXL	012	019	025	20.48	256	404MXL	012	019	025	40.40	505
208MXL	012	019	025	20.80	260	426MXL	012	019	025	42.56	532
212MXL	012	019	025	21.20	265	437MXL	012	019	025	43.68	546
214MXL	012	019	025	21.36	267	474MXL	012	019	025	47.36	592
224MXL	012	019	025	22.40	280	480MXL	012	019	025	48.00	600
236MXL	012	019	025	23.60	295	490MXL	012	019	025	48.96	612
238MXL	012	019	025	23.84	298	518MXL	012	019	025	51.84	648

York also manufactures custom pulleys and complete assemblies
 email: support@york-ind.com web: www.york-ind.com



URETHANE, Polyester Cord (RoHS compliant)



BELT NUMBER	1/8"	WIDTHS 3/16"	1/4"	PITCH LENGTH	NO. OF TEETH	BELT NUMBER	1/8"	WIDTHS 3/16"	1/4"	PITCH LENGTH	NO. OF TEETH
30T80-P	1/8	3/16	1/4	2.400	30	88T80-P	1/8	3/16	1/4	7.040	88
35T80-P	1/8	3/16	1/4	2.800	35	89T80-P	1/8	3/16	1/4	7.120	89
36T80-P	1/8	3/16	1/4	2.880	36	90T80-P	1/8	3/16	1/4	7.200	90
40T80-P	1/8	3/16	1/4	3.200	40	91T80-P	1/8	3/16	1/4	7.280	91
45T80-P	1/8	3/16	1/4	3.600	45	93T80-P	1/8	3/16	1/4	7.440	93
46T80-P	1/8	3/16	1/4	3.680	46	94T80-P	1/8	3/16	1/4	7.520	94
48T80-P	1/8	3/16	1/4	3.840	48	95T80-P	1/8	3/16	1/4	7.600	95
50T80-P	1/8	3/16	1/4	4.000	50	97T80-P	1/8	3/16	1/4	7.760	97
51T80-P	1/8	3/16	1/4	4.080	51	100T80-P	1/8	3/16	1/4	8.000	100
52T80-P	1/8	3/16	1/4	4.160	52	102T80-P	1/8	3/16	1/4	8.160	102
54T80-P	1/8	3/16	1/4	4.320	54	103T80-P	1/8	3/16	1/4	8.240	103
55T80-P	1/8	3/16	1/4	4.400	55	105T80-P	1/8	3/16	1/4	8.400	105
56T80-P	1/8	3/16	1/4	4.480	56	106T80-P	1/8	3/16	1/4	8.480	106
59T80-P	1/8	3/16	1/4	4.720	59	110T80-P	1/8	3/16	1/4	8.800	110
60T80-P	1/8	3/16	1/4	4.800	60	112T80-P	1/8	3/16	1/4	8.960	112
61T80-P	1/8	3/16	1/4	4.880	61	114T80-P	1/8	3/16	1/4	9.120	114
62T80-P	1/8	3/16	1/4	4.960	62	115T80-P	1/8	3/16	1/4	9.200	115
64T80-P	1/8	3/16	1/4	5.120	64	118T80-P	1/8	3/16	1/4	9.440	118
65T80-P	1/8	3/16	1/4	5.200	65	120T80-P	1/8	3/16	1/4	9.600	120
68T80-P	1/8	3/16	1/4	5.440	68	122T80-P	1/8	3/16	1/4	9.760	122
70T80-P	1/8	3/16	1/4	5.600	70	123T80-P	1/8	3/16	1/4	9.840	123
71T80-P	1/8	3/16	1/4	5.680	71	125T80-P	1/8	3/16	1/4	10.000	125
72T80-P	1/8	3/16	1/4	5.760	72	126T80-P	1/8	3/16	1/4	10.080	126
73T80-P	1/8	3/16	1/4	5.840	73	130T80-P	1/8	3/16	1/4	10.400	130
75T80-P	1/8	3/16	1/4	6.000	75	132T80-P	1/8	3/16	1/4	10.560	132
78T80-P	1/8	3/16	1/4	6.240	78	135T80-P	1/8	3/16	1/4	10.800	135
79T80-P	1/8	3/16	1/4	6.320	79	140T80-P	1/8	3/16	1/4	11.200	140
80T80-P	1/8	3/16	1/4	6.400	80	144T80-P	1/8	3/16	1/4	11.520	144
82T80-P	1/8	3/16	1/4	6.560	82	145T80-P	1/8	3/16	1/4	11.600	145
83T80-P	1/8	3/16	1/4	6.640	83	150T80-P	1/8	3/16	1/4	12.000	150
85T80-P	1/8	3/16	1/4	6.800	85	155T80-P	1/8	3/16	1/4	12.400	155
87T80-P	1/8	3/16	1/4	6.960	87	156T80-P	1/8	3/16	1/4	12.480	156

If you don't see the belt you need – call York!

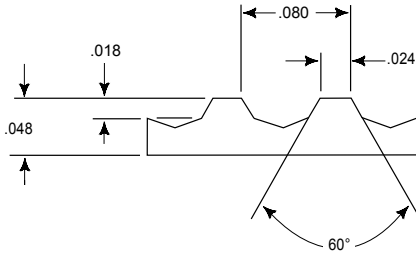
YORK

ISO 9001: 2008 Registered

303 Nassau Blvd., Garden City Park, NY 11040

Tel: 1-800 354 8466 Fax: 1-800 354 8485

URETHANE, Polyester Cord (RoHS compliant)



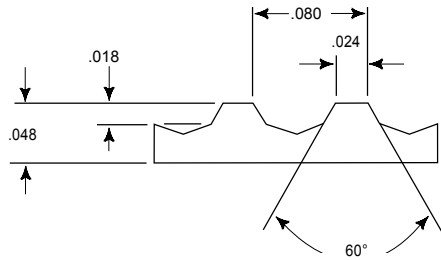
BELT NUMBER	1/8"	WIDTHS 3/16"	1/4"	PITCH LENGTH	NO. OF TEETH	BELT NUMBER	1/8"	WIDTHS 3/16"	1/4"	PITCH LENGTH	NO. OF TEETH
160T80-P	1/8	3/16	1/4	12.800	160	280T80-P	1/8	3/16	1/4	22.400	280
165T80-P	1/8	3/16	1/4	13.200	165	285T80-P	1/8	3/16	1/4	22.800	285
170T80-P	1/8	3/16	1/4	13.600	170	290T80-P	1/8	3/16	1/4	23.200	290
175T80-P	1/8	3/16	1/4	14.000	175	300T80-P	1/8	3/16	1/4	24.000	300
180T80-P	1/8	3/16	1/4	14.400	180	310T80-P	1/8	3/16	1/4	24.800	310
184T80-P	1/8	3/16	1/4	14.720	184	315T80-P	1/8	3/16	1/4	25.200	315
185T80-P	1/8	3/16	1/4	14.800	185	320T80-P	1/8	3/16	1/4	25.600	320
190T80-P	1/8	3/16	1/4	15.200	190	324T80-P	1/8	3/16	1/4	25.920	324
195T80-P	1/8	3/16	1/4	15.600	195	330T80-P	1/8	3/16	1/4	26.400	330
200T80-P	1/8	3/16	1/4	16.000	200	336T80-P	1/8	3/16	1/4	26.880	336
205T80-P	1/8	3/16	1/4	16.400	205	340T80-P	1/8	3/16	1/4	27.200	340
210T80-P	1/8	3/16	1/4	16.800	210	350T80-P	1/8	3/16	1/4	28.000	350
212T80-P	1/8	3/16	1/4	16.960	212	360T80-P	1/8	3/16	1/4	28.800	360
215T80-P	1/8	3/16	1/4	17.200	215	370T80-P	1/8	3/16	1/4	29.600	370
220T80-P	1/8	3/16	1/4	17.600	220	380T80-P	1/8	3/16	1/4	30.400	380
224T80-P	1/8	3/16	1/4	17.920	224	390T80-P	1/8	3/16	1/4	31.200	390
225T80-P	1/8	3/16	1/4	18.000	225	400T80-P	1/8	3/16	1/4	32.000	400
230T80-P	1/8	3/16	1/4	18.400	230	403T80-P	1/8	3/16	1/4	32.240	403
232T80-P	1/8	3/16	1/4	18.560	232	420T80-P	1/8	3/16	1/4	33.600	420
235T80-P	1/8	3/16	1/4	18.800	235	434T80-P	1/8	3/16	1/4	34.720	434
236T80-P	1/8	3/16	1/4	18.880	236	454T80-P	1/8	3/16	1/4	36.320	454
240T80-P	1/8	3/16	1/4	19.200	240	481T80-P	1/8	3/16	1/4	38.480	481
245T80-P	1/8	3/16	1/4	19.600	245	482T80-P	1/8	3/16	1/4	38.560	482
249T80-P	1/8	3/16	1/4	19.920	249	515T80-P	1/8	3/16	1/4	41.200	515
250T80-P	1/8	3/16	1/4	20.000	250	562T80-P	1/8	3/16	1/4	44.960	562
253T80-P	1/8	3/16	1/4	20.240	253	601T80-P	1/8	3/16	1/4	48.080	601
255T80-P	1/8	3/16	1/4	20.400	255	962T80-P	1/8	3/16	1/4	76.960	962
260T80-P	1/8	3/16	1/4	20.800	260	979T80-P	1/8	3/16	1/4	78.320	979
265T80-P	1/8	3/16	1/4	21.200	265	1155T80-P	1/8	3/16	1/4	92.400	1155
270T80-P	1/8	3/16	1/4	21.600	270	1250T80-P	1/8	3/16	1/4	100.000	1250
275T80-P	1/8	3/16	1/4	22.000	275	1300T80-P	1/8	3/16	1/4	104.000	1300

If you don't see the belt you need – call York!

York also manufactures custom pulleys and complete assemblies
 email: support@york-ind.com web: www.york-ind.com



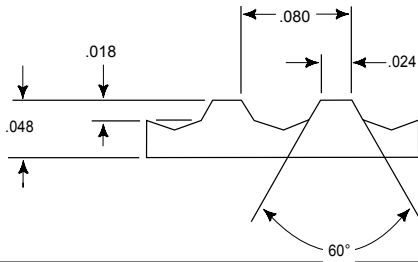
URETHANE, Kevlar Cord (RoHS compliant)



BELT NUMBER	1/8"	WIDTHS 3/16"	1/4"	PITCH LENGTH	NO. OF TEETH	BELT NUMBER	1/8"	WIDTHS 3/16"	1/4"	PITCH LENGTH	NO. OF TEETH
30T80-K	1/8	3/16	1/4	2.400	30	88T80-K	1/8	3/16	1/4	7.040	88
35T80-K	1/8	3/16	1/4	2.800	35	89T80-K	1/8	3/16	1/4	7.120	89
36T80-K	1/8	3/16	1/4	2.880	36	90T80-K	1/8	3/16	1/4	7.200	90
40T80-K	1/8	3/16	1/4	3.200	40	91T80-K	1/8	3/16	1/4	7.280	91
45T80-K	1/8	3/16	1/4	3.600	45	93T80-K	1/8	3/16	1/4	7.440	93
46T80-K	1/8	3/16	1/4	3.680	46	94T80-K	1/8	3/16	1/4	7.520	94
48T80-K	1/8	3/16	1/4	3.840	48	95T80-K	1/8	3/16	1/4	7.600	95
50T80-K	1/8	3/16	1/4	4.000	50	97T80-K	1/8	3/16	1/4	7.760	97
51T80-K	1/8	3/16	1/4	4.080	51	100T80-K	1/8	3/16	1/4	8.000	100
52T80-K	1/8	3/16	1/4	4.160	52	102T80-K	1/8	3/16	1/4	8.160	102
54T80-K	1/8	3/16	1/4	4.320	54	103T80-K	1/8	3/16	1/4	8.240	103
55T80-K	1/8	3/16	1/4	4.400	55	105T80-K	1/8	3/16	1/4	8.400	105
56T80-K	1/8	3/16	1/4	4.480	56	106T80-K	1/8	3/16	1/4	8.480	106
59T80-K	1/8	3/16	1/4	4.720	59	110T80-K	1/8	3/16	1/4	8.800	110
60T80-K	1/8	3/16	1/4	4.800	60	112T80-K	1/8	3/16	1/4	8.960	112
61T80-K	1/8	3/16	1/4	4.880	61	114T80-K	1/8	3/16	1/4	9.120	114
62T80-K	1/8	3/16	1/4	4.960	62	115T80-K	1/8	3/16	1/4	9.200	115
64T80-K	1/8	3/16	1/4	5.120	64	118T80-K	1/8	3/16	1/4	9.440	118
65T80-K	1/8	3/16	1/4	5.200	65	120T80-K	1/8	3/16	1/4	9.600	120
68T80-K	1/8	3/16	1/4	5.440	68	122T80-K	1/8	3/16	1/4	9.760	122
70T80-K	1/8	3/16	1/4	5.600	70	123T80-K	1/8	3/16	1/4	9.840	123
71T80-K	1/8	3/16	1/4	5.680	71	125T80-K	1/8	3/16	1/4	10.000	125
72T80-K	1/8	3/16	1/4	5.760	72	126T80-K	1/8	3/16	1/4	10.080	126
73T80-K	1/8	3/16	1/4	5.840	73	130T80-K	1/8	3/16	1/4	10.400	130
75T80-K	1/8	3/16	1/4	6.000	75	132T80-K	1/8	3/16	1/4	10.560	132
78T80-K	1/8	3/16	1/4	6.240	78	135T80-K	1/8	3/16	1/4	10.800	135
79T80-K	1/8	3/16	1/4	6.320	79	140T80-K	1/8	3/16	1/4	11.200	140
80T80-K	1/8	3/16	1/4	6.400	80	144T80-K	1/8	3/16	1/4	11.520	144
82T80-K	1/8	3/16	1/4	6.560	82	145T80-K	1/8	3/16	1/4	11.600	145
83T80-K	1/8	3/16	1/4	6.640	83	150T80-K	1/8	3/16	1/4	12.000	150
85T80-K	1/8	3/16	1/4	6.800	85	155T80-K	1/8	3/16	1/4	12.400	155
87T80-K	1/8	3/16	1/4	6.960	87	156T80-K	1/8	3/16	1/4	12.480	156

If you don't see the belt you need – call York!

URETHANE, Kevlar Cord (RoHS compliant)



BELT NUMBER	1/8"	WIDTHS 3/16"	1/4"	PITCH LENGTH	NO. OF TEETH	BELT NUMBER	1/8"	WIDTHS 3/16"	1/4"	PITCH LENGTH	NO. OF TEETH
160T80-K	1/8	3/16	1/4	12.800	160	285T80-K	1/8	3/16	1/4	22.800	285
165T80-K	1/8	3/16	1/4	13.200	165	290T80-K	1/8	3/16	1/4	23.200	290
170T80-K	1/8	3/16	1/4	13.600	170	295T80-K	1/8	3/16	1/4	23.600	295
175T80-K	1/8	3/16	1/4	14.000	175	300T80-K	1/8	3/16	1/4	24.000	300
180T80-K	1/8	3/16	1/4	14.400	180	310T80-K	1/8	3/16	1/4	24.800	310
184T80-K	1/8	3/16	1/4	14.720	184	315T80-K	1/8	3/16	1/4	25.200	315
185T80-K	1/8	3/16	1/4	14.800	185	320T80-K	1/8	3/16	1/4	25.600	320
190T80-K	1/8	3/16	1/4	15.200	190	324T80-K	1/8	3/16	1/4	25.920	324
195T80-K	1/8	3/16	1/4	15.600	195	330T80-K	1/8	3/16	1/4	26.400	330
200T80-K	1/8	3/16	1/4	16.000	200	336T80-K	1/8	3/16	1/4	26.880	336
205T80-K	1/8	3/16	1/4	16.400	205	340T80-K	1/8	3/16	1/4	27.200	340
210T80-K	1/8	3/16	1/4	16.800	210	350T80-K	1/8	3/16	1/4	28.000	350
212T80-K	1/8	3/16	1/4	16.960	212	358T80-K	1/8	3/16	1/4	28.640	358
215T80-K	1/8	3/16	1/4	17.200	215	360T80-K	1/8	3/16	1/4	28.800	360
220T80-K	1/8	3/16	1/4	17.600	220	370T80-K	1/8	3/16	1/4	29.600	370
224T80-K	1/8	3/16	1/4	17.920	224	380T80-K	1/8	3/16	1/4	30.400	380
225T80-K	1/8	3/16	1/4	18.000	225	390T80-K	1/8	3/16	1/4	31.200	390
230T80-K	1/8	3/16	1/4	18.400	230	400T80-K	1/8	3/16	1/4	32.000	400
232T80-K	1/8	3/16	1/4	18.560	232	403T80-K	1/8	3/16	1/4	32.240	403
235T80-K	1/8	3/16	1/4	18.800	235	420T80-K	1/8	3/16	1/4	33.600	420
236T80-K	1/8	3/16	1/4	18.880	236	434T80-K	1/8	3/16	1/4	34.720	434
240T80-K	1/8	3/16	1/4	19.200	240	454T80-K	1/8	3/16	1/4	36.320	454
245T80-K	1/8	3/16	1/4	19.600	245	481T80-K	1/8	3/16	1/4	38.480	481
249T80-K	1/8	3/16	1/4	19.920	249	482T80-K	1/8	3/16	1/4	38.560	482
250T80-K	1/8	3/16	1/4	20.000	250	515T80-K	1/8	3/16	1/4	41.200	515
253T80-K	1/8	3/16	1/4	20.240	253	562T80-K	1/8	3/16	1/4	44.960	562
255T80-K	1/8	3/16	1/4	20.400	255	601T80-K	1/8	3/16	1/4	48.080	601
260T80-K	1/8	3/16	1/4	20.800	260	962T80-K	1/8	3/16	1/4	76.960	962
265T80-K	1/8	3/16	1/4	21.200	265	979T80-K	1/8	3/16	1/4	78.320	979
270T80-K	1/8	3/16	1/4	21.600	270	1155T80-K	1/8	3/16	1/4	92.400	1155
275T80-K	1/8	3/16	1/4	22.000	275	1250T80-K	1/8	3/16	1/4	100.000	1250
280T80-K	1/8	3/16	1/4	22.400	280	1300T80-K	1/8	3/16	1/4	104.000	1300

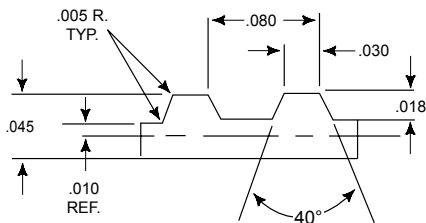
If you don't see the belt you need – call York!

York also manufactures custom pulleys and complete assemblies
 email: support@york-ind.com web: www.york-ind.com



Cream Colored Engineered Polymer with Fiberglass Cord (RoHS compliant)

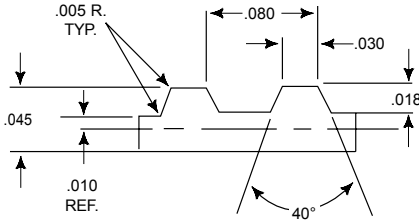
If you don't see the belt you need – call York!



BELT NUMBER	WIDTHS			PITCH LENGTH	NO. OF TEETH	BELT NUMBER	WIDTHS			PITCH LENGTH	NO. OF TEETH
	1/8"	3/16"	1/4"				1/8"	3/16"	1/4"		
TM-29MXL	012	019	025	2.88	36	TM-70MXL	012	019	025	7.04	88
TM-32MXL	012	019	025	3.20	40	TM-72MXL	012	019	025	7.20	90
TM-34MXL	012	019	025	3.36	42	TM-73MXL	012	019	025	7.36	92
TM-36MXL	012	019	025	3.60	45	TM-74MXL	012	019	025	7.44	93
TM-40MXL	012	019	025	4.00	50	TM-75MXL	012	019	025	7.52	94
TM-42MXL	012	019	025	4.24	53	TM-76MXL	012	019	025	7.60	95
TM-43MXL	012	019	025	4.30	54	TM-78MXL	012	019	025	7.76	97
TM-44MXL	012	019	025	4.40	55	TM-80MXL	012	019	025	8.00	100
TM-45MXL	012	019	025	4.48	56	TM-81MXL	012	019	025	8.08	101
TM-46MXL	012	019	025	4.64	58	TM-82MXL	012	019	025	8.16	102
TM-47MXL	012	019	025	4.72	59	TM-84MXL	012	019	025	8.40	105
TM-48MXL	012	019	025	4.80	60	TM-85MXL	012	019	025	8.48	106
TM-49MXL	012	019	025	4.88	61	TM-86MXL	012	019	025	8.56	107
TM-50MXL	012	019	025	5.04	63	TM-87MXL	012	019	025	8.72	109
TM-51MXL	012	019	025	5.12	64	TM-88MXL	012	019	025	8.80	110
TM-52MXL	012	019	025	5.20	65	TM-90MXL	012	019	025	8.96	112
TM-53MXL	012	019	025	5.36	67	TM-91MXL	012	019	025	9.12	114
TM-54MXL	012	019	025	5.44	68	TM-94MXL	012	019	025	9.44	118
TM-55MXL	012	019	025	5.52	69	TM-96MXL	012	019	025	9.60	120
TM-56MXL	012	019	025	5.60	70	TM-97MXL	012	019	025	9.76	122
TM-57MXL	012	019	025	5.68	71	TM-98MXL	012	019	025	9.84	123
TM-58MXL-D	012	019	025	5.76	72	TM-100MXL	012	019	025	10.00	125
TM-58MXL-U	012	019	025	5.84	73	TM-101MXL	012	019	025	10.08	126
TM-60MXL	012	019	025	6.00	75	TM-102MXL	012	019	025	10.16	127
TM-61MXL	012	019	025	6.08	76	TM-103MXL	012	019	025	10.32	129
TM-62MXL	012	019	025	6.16	77	TM-104MXL	012	019	025	10.40	130
TM-63MXL	012	019	025	6.32	79	TM-106MXL	012	019	025	10.56	132
TM-64MXL	012	019	025	6.40	80	TM-107MXL	012	019	025	10.72	134
TM-64MXL-D	012	019	025	6.48	81	TM-111MXL	012	019	025	11.12	139
TM-65MXL	012	019	025	6.56	82	TM-112MXL	012	019	025	11.20	140
TM-66MXL	012	019	025	6.64	83	TM-115MXL	012	019	025	11.52	144
TM-67MXL	012	019	025	6.72	84	TM-116MXL	012	019	025	11.60	145
TM-68MXL	012	019	025	6.80	85	TM-120MXL	012	019	025	12.00	150
TM-69MXL	012	019	025	6.96	87	TM-122MXL	012	019	025	12.24	153

Cream Colored Engineered Polymer with Fiberglass Cord (RoHS compliant)

If you don't see the belt you need – call York!



BELT NUMBER	1/8"	WIDTHS 3/16"	1/4"	PITCH LENGTH	NO. OF TEETH	BELT NUMBER	1/8"	WIDTHS 3/16"	1/4"	PITCH LENGTH	NO. OF TEETH
TM-124MXL	012	019	025	12.40	155	TM-240MXL	012	019	025	24.00	300
TM-126MXL	012	019	025	12.64	158	TM-252MXL	012	019	025	25.20	315
TM-128MXL	012	019	025	12.80	160	TM-254MXL	012	019	025	25.44	318
TM-132MXL	012	019	025	13.20	165	TM-274MXL	012	019	025	27.44	343
TM-133MXL	012	019	025	13.28	166	TM-277MXL	012	019	025	27.76	347
TM-136MXL	012	019	025	13.60	170	TM-286MXL	012	019	025	28.64	358
TM-140MXL	012	019	025	14.00	175	TM-288MXL	012	019	025	28.80	360
TM-144MXL	012	019	025	14.40	180	TM-297MXL	012	019	025	29.68	371
TM-147MXL	012	019	025	14.72	184	TM-298MXL	012	019	025	29.76	372
TM-152MXL	012	019	025	15.20	190	TM-312MXL	012	019	025	31.20	390
TM-156MXL	012	019	025	15.60	195	TM-320MXL	012	019	025	32.00	400
TM-160MXL	012	019	025	16.00	200	TM-326MXL	012	019	025	32.64	408
TM-166MXL	012	019	025	16.64	208	TM-330MXL	012	019	025	32.96	412
TM-168MXL	012	019	025	16.80	210	TM-336MXL	012	019	025	33.60	420
TM-170MXL	012	019	025	16.96	212	TM-339MXL	012	019	025	33.92	424
TM-177MXL	012	019	025	17.68	221	TM-340MXL	012	019	025	34.00	425
TM-178MXL	012	019	025	17.76	222	TM-345MXL	012	019	025	34.48	431
TM-180MXL	012	019	025	18.00	225	TM-347MXL	012	019	025	34.72	434
TM-183MXL	012	019	025	18.32	229	TM-348MXL	012	019	025	34.80	435
TM-184MXL	012	019	025	18.40	230	TM-352MXL	012	019	025	35.20	440
TM-186MXL	012	019	025	18.56	232	TM-362MXL	012	019	025	36.24	453
TM-188MXL	012	019	025	18.80	235	TM-370MXL	012	019	025	37.04	463
TM-196MXL	012	019	025	19.60	245	TM-380MXL	012	019	025	38.00	475
TM-198MXL	012	019	025	19.84	248	TM-389MXL	012	019	025	38.96	487
TM-199MXL	012	019	025	19.92	249	TM-390MXL	012	019	025	39.04	488
TM-200MXL	012	019	025	20.00	250	TM-398MXL	012	019	025	39.84	498
TM-201MXL	012	019	025	20.08	251	TM-400MXL	012	019	025	40.00	500
TM-205MXL	012	019	025	20.48	256	TM-404MXL	012	019	025	40.40	505
TM-208MXL	012	019	025	20.80	260	TM-426MXL	012	019	025	42.56	532
TM-212MXL	012	019	025	21.20	265	TM-437MXL	012	019	025	43.68	546
TM-214MXL	012	019	025	21.36	267	TM-474MXL	012	019	025	47.36	592
TM-224MXL	012	019	025	22.40	280	TM-480MXL	012	019	025	48.00	600
TM-236MXL	012	019	025	23.60	295	TM-490MXL	012	019	025	48.96	612
TM-238MXL	012	019	025	23.84	298	TM-518MXL	012	019	025	51.84	648

York also manufactures custom pulleys and complete assemblies
 email: support@york-ind.com web: www.york-ind.com

