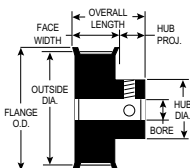


TYPE 6FC



TYPE 6F

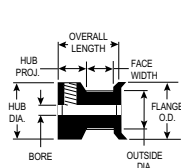


PART NUMBER	NO. OF GROOVES	PITCH DIA.	OUTSIDE DIA.	FLANGE O.D.	BORE (+.001) (-.000)	FACE WIDTH	OVERALL LENGTH	HUB PROJ.	HUB DIA.	SET SCREWS
10M187-6A X 3/32	10	.260	.246	.425	6FC .0938	220	1/2	15/64	.425	2-64(1)
SAV-10M187-6A X 3/32	10	.260	.246	.425	6FC .0938	220	1/2	15/64	.425	2-64(1)
10M187-6A X 1/8	10	.260	.246	.425	6FC .1250	220	1/2	15/64	.425	4-40(1)
SAV-10M187-6A X 1/8	10	.260	.246	.425	6FC .1250	220	1/2	15/64	.425	4-40(1)
11M187-6A X 3/32	11	.286	.272	.450	6FC .0938	220	1/2	15/64	.450	2-64(1)
SAV-11M187-6A X 3/32	11	.286	.272	.450	6FC .0938	220	1/2	15/64	.450	2-64(1)
11M187-6A X 1/8	11	.286	.272	.450	6FC .1250	220	1/2	15/64	.450	4-40(1)
SAV-11M187-6A X 1/8	11	.286	.272	.450	6FC .1250	220	1/2	15/64	.450	4-40(1)
12M187-6A X 3/32	12	.312	.298	.480	6FC .0938	220	1/2	15/64	.480	2-64(1)
SAV-12M187-6A X 3/32	12	.312	.298	.480	6FC .0938	220	1/2	15/64	.480	2-64(1)
12M187-6A X 1/8	12	.312	.298	.480	6FC .1250	220	1/2	15/64	.480	4-40(1)
SAV-12M187-6A X 1/8	12	.312	.298	.480	6FC .1250	220	1/2	15/64	.480	4-40(1)
13M187-6A X 1/8	13	.338	.324	.505	6FC .1250	220	1/2	15/64	.505	4-40(1)
SAV-13M187-6A X 1/8	13	.338	.324	.505	6FC .1250	220	1/2	15/64	.505	4-40(1)
14M187-6A X 1/8	14	.364	.350	.530	6FC .1250	220	1/2	15/64	.530	4-40(1)
SAV-14M187-6A X 1/8	14	.364	.350	.530	6FC .1250	220	1/2	15/64	.530	4-40(1)
15M187-6A X 1/8	15	.390	.376	.555	6FC .1250	220	1/2	15/64	.555	4-40(1)
SAV-15M187-6A X 1/8	15	.390	.376	.555	6FC .1250	220	1/2	15/64	.555	4-40(1)
15M187-6A X 3/16	15	.390	.376	.555	6FC .1875	220	1/2	15/64	.555	4-40(1)
SAV-15M187-6A X 3/16	15	.390	.376	.555	6FC .1875	220	1/2	15/64	.555	4-40(1)
16M187-6A X 1/8	16	.416	.402	.580	6FC .1250	220	1/2	15/64	.580	4-40(1)
SAV-16M187-6A X 1/8	16	.416	.402	.580	6FC .1250	220	1/2	15/64	.580	4-40(1)
16M187-6A X 3/16	16	.416	.402	.580	6FC .1875	220	1/2	15/64	.580	4-40(1)
SAV-16M187-6A X 3/16	16	.416	.402	.580	6FC .1875	220	1/2	15/64	.580	4-40(1)
18M187-6A X 1/4	18	.468	.454	.635	6FC .2500	220	1/2	15/64	.635	8-32(2)
SAV-18M187-6A X 1/4	18	.468	.454	.635	6FC .2500	220	1/2	15/64	.635	8-32(2)
20M187-6A X 1/4	20	.520	.506	.685	6FC .2500	220	1/2	15/64	.685	8-32(2)
SAV-20M187-6A X 1/4	20	.520	.506	.685	6FC .2500	220	1/2	15/64	.685	8-32(2)
21M187-6A X 1/4	21	.546	.532	.710	6FC .2500	220	1/2	15/64	.710	8-32(2)
SAV-21M187-6A X 1/4	21	.546	.532	.710	6FC .2500	220	1/2	15/64	.710	8-32(2)
22M187-6A X 1/4	22	.572	.558	.740	6FC .2500	220	1/2	15/64	.740	8-32(2)
SAV-22M187-6A X 1/4	22	.572	.558	.740	6FC .2500	220	1/2	15/64	.740	8-32(2)
18M187-1A X 1/8	18	.468	.454	.635	6F .1250	324	9/16	15/64	.312	4-40(2)
SAV-18M187-1A X 1/8	18	.468	.454	.635	6F .1250	324	9/16	15/64	.312	4-40(2)
18M187-1A X 3/16	18	.468	.454	.635	6F .1875	324	9/16	15/64	.312	6-40(2)
SAV-18M187-1A X 3/16	18	.468	.454	.635	6F .1875	324	9/16	15/64	.312	6-40(2)

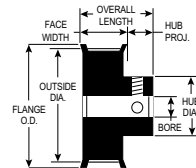
"SAV-" in front of any standard timing pulley part # represents the Shaft-Saver version. Shaft-Saver pulleys have special setscrews that grip without damage to the shaft and allow easy pulley removal and realignment. For additional information, see our Shaft-Saver Engineering Section.

ALUMINUM WITH CLEAR ANODIZE (RoHS compliant)

FOR BELTS UP TO 3/16" WIDE



TYPE 6FC



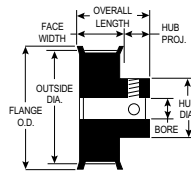
TYPE 6F

PART NUMBER	NO. OF GROOVES	PITCH DIA.	OUTSIDE DIA.	FLANGE O.D.	BORE TYPE	BORE (+.001) (-.000)	FACE WIDTH	OVERALL LENGTH	HUB PROJ.	HUB DIA.	SET SCREWS
20M187-1A X 1/8	20	.520	.506	.685	6F	.1250	.324	9/16	15/64	.364	4-40(2)
SAV-20M187-1A X 1/8	20	.520	.506	.685	6F	.1250	.324	9/16	15/64	.364	4-40(2)
20M187-1A X 3/16	20	.520	.506	.685	6F	.1875	.324	9/16	15/64	.364	6-40(2)
SAV-20M187-1A X 3/16	20	.520	.506	.685	6F	.1875	.324	9/16	15/64	.364	6-40(2)
21M187-1A X 1/8	21	.546	.532	.710	6F	.1250	.324	9/16	15/64	.390	4-40(2)
SAV-21M187-1A X 1/8	21	.546	.532	.710	6F	.1250	.324	9/16	15/64	.390	4-40(2)
21M187-1A X 3/16	21	.546	.532	.710	6F	.1875	.324	9/16	15/64	.390	6-40(2)
SAV-21M187-1A X 3/16	21	.546	.532	.710	6F	.1875	.324	9/16	15/64	.390	6-40(2)
22M187-1A X 1/8	22	.572	.558	.740	6F	.1250	.324	9/16	15/64	.390	4-40(2)
SAV-22M187-1A X 1/8	22	.572	.558	.740	6F	.1250	.324	9/16	15/64	.390	4-40(2)
22M187-1A X 3/16	22	.572	.558	.740	6F	.1875	.324	9/16	15/64	.390	6-40(2)
SAV-22M187-1A X 3/16	22	.572	.558	.740	6F	.1875	.324	9/16	15/64	.390	6-40(2)
24M187-1A X 3/16	24	.624	.610	.790	6F	.1875	.324	5/8	19/64	.442	6-40(2)
SAV-24M187-1A X 3/16	24	.624	.610	.790	6F	.1875	.324	5/8	19/64	.442	6-40(2)
24M187-1A X 1/4	24	.624	.610	.790	6F	.2500	.324	5/8	19/64	.442	6-40(2)
SAV-24M187-1A X 1/4	24	.624	.610	.790	6F	.2500	.324	5/8	19/64	.442	6-40(2)
25M187-1A X 3/16	25	.650	.636	.815	6F	.1875	.324	5/8	19/64	.468	6-40(2)
SAV-25M187-1A X 3/16	25	.650	.636	.815	6F	.1875	.324	5/8	19/64	.468	6-40(2)
25M187-1A X 1/4	25	.650	.636	.815	6F	.2500	.324	5/8	19/64	.468	6-40(2)
SAV-25M187-1A X 1/4	25	.650	.636	.815	6F	.2500	.324	5/8	19/64	.468	6-40(2)
26M187-1A X 3/16	26	.676	.662	.840	6F	.1875	.324	5/8	19/64	.494	6-40(2)
SAV-26M187-1A X 3/16	26	.676	.662	.840	6F	.1875	.324	5/8	19/64	.494	6-40(2)
26M187-1A X 1/4	26	.676	.662	.840	6F	.2500	.324	5/8	19/64	.494	6-40(2)
SAV-26M187-1A X 1/4	26	.676	.662	.840	6F	.2500	.324	5/8	19/64	.494	6-40(2)
28M187-1A X 3/16	28	.728	.714	.895	6F	.1875	.324	5/8	19/64	.494	6-40(2)
SAV-28M187-1A X 3/16	28	.728	.714	.895	6F	.1875	.324	5/8	19/64	.494	6-40(2)
28M187-1A X 1/4	28	.728	.714	.895	6F	.2500	.324	5/8	19/64	.494	6-40(2)
SAV-28M187-1A X 1/4	28	.728	.714	.895	6F	.2500	.324	5/8	19/64	.494	6-40(2)

“SAV-” in front of any standard timing pulley part # represents the Shaft-Saver version. Shaft-Saver pulleys have special setscrews that grip without damage to the shaft and allow easy pulley removal and realignment. For additional information, see our Shaft-Saver Engineering Section.

ALUMINUM WITH CLEAR ANODIZE (RoHS compliant)

FOR BELTS UP TO 3/16" WIDE



TYPE 6F

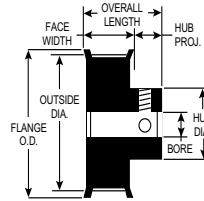


PART NUMBER	NO. OF GROOVES	PITCH DIA.	OUTSIDE DIA.	FLANGE O.D.	TYPE	BORE (+.001 / -.000)	FACE WIDTH	OVERALL LENGTH	HUB PROJ.	HUB DIA.	SET SCREWS
30M187-1A X 3/16	30	.780	.766	.945	6F	.1875	.324	5/8	19/64	.546	6-40(2)
SAV-30M187-1A X 3/16	30	.780	.766	.945	6F	.1875	.324	5/8	19/64	.546	6-40(2)
30M187-1A X 1/4	30	.780	.766	.945	6F	.2500	.324	5/8	19/64	.546	8-32(2)
SAV-30M187-1A X 1/4	30	.780	.766	.945	6F	.2500	.324	5/8	19/64	.546	8-32(2)
32M187-1A X 3/16	32	.832	.818	1.000	6F	.1875	.324	5/8	19/64	.598	6-40(2)
SAV-32M187-1A X 3/16	32	.832	.818	1.000	6F	.1875	.324	5/8	19/64	.598	6-40(2)
32M187-1A X 1/4	32	.832	.818	1.000	6F	.2500	.324	5/8	19/64	.598	8-32(2)
SAV-32M187-1A X 1/4	32	.832	.818	1.000	6F	.2500	.324	5/8	19/64	.598	8-32(2)
33M187-1A X 3/16	33	.858	.844	1.025	6F	.1875	.324	5/8	19/64	.624	6-40(2)
SAV-33M187-1A X 3/16	33	.858	.844	1.025	6F	.1875	.324	5/8	19/64	.624	6-40(2)
33M187-1A X 1/4	33	.858	.844	1.025	6F	.2500	.324	5/8	19/64	.624	8-32(2)
SAV-33M187-1A X 1/4	33	.858	.844	1.025	6F	.2500	.324	5/8	19/64	.624	8-32(2)
34M187-1A X 3/16	34	.884	.870	1.050	6F	.1875	.324	5/8	19/64	.624	6-40(2)
SAV-34M187-1A X 3/16	34	.884	.870	1.050	6F	.1875	.324	5/8	19/64	.624	6-40(2)
34M187-1A X 1/4	34	.884	.870	1.050	6F	.2500	.324	5/8	19/64	.624	8-32(2)
SAV-34M187-1A X 1/4	34	.884	.870	1.050	6F	.2500	.324	5/8	19/64	.624	8-32(2)
35M187-1A X 3/16	35	.910	.896	1.080	6F	.1875	.324	5/8	19/64	.650	6-40(2)
SAV-35M187-1A X 3/16	35	.910	.896	1.080	6F	.1875	.324	5/8	19/64	.650	6-40(2)
35M187-1A X 1/4	35	.910	.896	1.080	6F	.2500	.324	5/8	19/64	.650	8-32(2)
SAV-35M187-1A X 1/4	35	.910	.896	1.080	6F	.2500	.324	5/8	19/64	.650	8-32(2)
36M187-1A X 3/16	36	.936	.922	1.105	6F	.1875	.324	5/8	19/64	.676	6-40(2)
SAV-36M187-1A X 3/16	36	.936	.922	1.105	6F	.1875	.324	5/8	19/64	.676	6-40(2)
36M187-1A X 1/4	36	.936	.922	1.105	6F	.2500	.324	5/8	19/64	.676	8-32(2)
SAV-36M187-1A X 1/4	36	.936	.922	1.105	6F	.2500	.324	5/8	19/64	.676	8-32(2)
38M187-1A X 1/4	38	.988	.974	1.155	6F	.2500	.324	5/8	19/64	.728	8-32(2)
SAV-38M187-1A X 1/4	38	.988	.974	1.155	6F	.2500	.324	5/8	19/64	.728	8-32(2)
38M187-1A X 5/16	38	.988	.974	1.155	6F	.3125	.324	5/8	19/64	.728	8-32(2)
SAV-38M187-1A X 5/16	38	.988	.974	1.155	6F	.3125	.324	5/8	19/64	.728	8-32(2)
40M187-1A X 1/4	40	1.040	1.026	1.210	6F	.2500	.340	21/32	21/64	.754	8-32(2)
SAV-40M187-1A X 1/4	40	1.040	1.026	1.210	6F	.2500	.340	21/32	21/64	.754	8-32(2)
40M187-1A X 5/16	40	1.040	1.026	1.210	6F	.3125	.340	21/32	21/64	.754	8-32(2)
SAV-40M187-1A X 5/16	40	1.040	1.026	1.210	6F	.3125	.340	21/32	21/64	.754	8-32(2)
42M187-1A X 1/4	42	1.092	1.078	1.260	6F	.2500	.340	21/32	21/64	.806	8-32(2)
SAV-42M187-1A X 1/4	42	1.092	1.078	1.260	6F	.2500	.340	21/32	21/64	.806	8-32(2)
42M187-1A X 5/16	42	1.092	1.078	1.260	6F	.3125	.340	21/32	21/64	.806	8-32(2)
SAV-42M187-1A X 5/16	42	1.092	1.078	1.260	6F	.3125	.340	21/32	21/64	.806	8-32(2)
44M187-1A X 1/4	44	1.144	1.130	1.315	6F	.2500	.340	21/32	21/64	.858	8-32(2)
SAV-44M187-1A X 1/4	44	1.144	1.130	1.315	6F	.2500	.340	21/32	21/64	.858	8-32(2)

"SAV-" in front of any standard timing pulley part # represents the Shaft-Saver version. Shaft-Saver pulleys have special setscrews that grip without damage to the shaft and allow easy pulley removal and realignment. For additional information, see our Shaft-Saver Engineering Section.

ALUMINUM WITH CLEAR ANODIZE (RoHS compliant)

FOR BELTS UP TO 3/16" WIDE



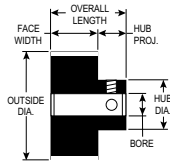
TYPE 6F

PART NUMBER	NO. OF GROOVES	PITCH DIA.	OUTSIDE DIA.	FLANGE O.D.	BORE (+.001 / -.000)	FACE WIDTH	OVERALL LENGTH	HUB PROJ.	HUB DIA.	SET SCREWS
44M187-1A X 5/16	44	1.144	1.130	1.315	6F .3125	.340	21/32	21/64	.858	8-32(2)
SAV-44M187-1A X 5/16	44	1.144	1.130	1.315	6F .3125	.340	21/32	21/64	.858	8-32(2)
45M187-1A X 1/4	45	1.170	1.156	1.340	6F .2500	.340	21/32	21/64	.884	8-32(2)
SAV-45M187-1A X 1/4	45	1.170	1.156	1.340	6F .2500	.340	21/32	21/64	.884	8-32(2)
45M187-1A X 5/16	45	1.170	1.156	1.340	6F .3125	.340	21/32	21/64	.884	8-32(2)
SAV-45M187-1A X 5/16	45	1.170	1.156	1.340	6F .3125	.340	21/32	21/64	.884	8-32(2)
48M187-1A X 1/4	48	1.248	1.234	1.420	6F .2500	.340	21/32	21/64	.936	8-32(2)
SAV-48M187-1A X 1/4	48	1.248	1.234	1.420	6F .2500	.340	21/32	21/64	.936	8-32(2)
48M187-1A X 5/16	48	1.248	1.234	1.420	6F .3125	.340	21/32	21/64	.936	8-32(2)
SAV-48M187-1A X 5/16	48	1.248	1.234	1.420	6F .3125	.340	21/32	21/64	.936	8-32(2)
50M187-1A X 1/4	50	1.300	1.286	1.470	6F .2500	.340	21/32	21/64	.988	8-32(2)
SAV-50M187-1A X 1/4	50	1.300	1.286	1.470	6F .2500	.340	21/32	21/64	.988	8-32(2)
50M187-1A X 5/16	50	1.300	1.286	1.470	6F .3125	.340	21/32	21/64	.988	8-32(2)
SAV-50M187-1A X 5/16	50	1.300	1.286	1.470	6F .3125	.340	21/32	21/64	.988	8-32(2)
54M187-1A X 1/4	54	1.404	1.390	1.575	6F .2500	.340	21/32	21/64	1.066	8-32(2)
SAV-54M187-1A X 1/4	54	1.404	1.390	1.575	6F .2500	.340	21/32	21/64	1.066	8-32(2)
54M187-1A X 5/16	54	1.404	1.390	1.575	6F .3125	.340	21/32	21/64	1.066	8-32(2)
SAV-54M187-1A X 5/16	54	1.404	1.390	1.575	6F .3125	.340	21/32	21/64	1.066	8-32(2)
60M187-1A X 1/4	60	1.560	1.546	1.730	6F .2500	.340	21/32	21/64	1.222	8-32(2)
SAV-60M187-1A X 1/4	60	1.560	1.546	1.730	6F .2500	.340	21/32	21/64	1.222	8-32(2)
60M187-1A X 5/16	60	1.560	1.546	1.730	6F .3125	.340	21/32	21/64	1.222	8-32(2)
SAV-60M187-1A X 5/16	60	1.560	1.546	1.730	6F .3125	.340	21/32	21/64	1.222	8-32(2)

“SAV-” in front of any standard timing pulley part # represents the Shaft-Saver version. Shaft-Saver pulleys have special setscrews that grip without damage to the shaft and allow easy pulley removal and realignment. For additional information, see our Shaft-Saver Engineering Section.

ALUMINUM WITH CLEAR ANODIZE (RoHS compliant)

FOR BELTS UP TO 3/16" WIDE



TYPE 6

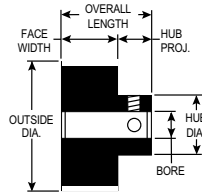


PART NUMBER	NO. OF GROOVES	PITCH DIA.	OUTSIDE DIA.	TYPE	BORE (+.001 / -.000)	FACE WIDTH	OVERALL LENGTH	HUB PROJ.	HUB DIA.	SET SCREWS (2@90°)
20M187-2A X 3/16	20	.520	.506	6	.1875	3/8	3/4	3/8	.436	6-40
SAV-20M187-2A X 3/16	20	.520	.506	6	.1875	3/8	3/4	3/8	.436	6-40
20M187-2A X 1/4	20	.520	.506	6	.2500	3/8	3/4	3/8	.436	6-40
SAV-20M187-2A X 1/4	20	.520	.506	6	.2500	3/8	3/4	3/8	.436	6-40
24M187-2A X 3/16	24	.624	.610	6	.1875	3/8	3/4	3/8	.500	6-40
SAV-24M187-2A X 3/16	24	.624	.610	6	.1875	3/8	3/4	3/8	.500	6-40
24M187-2A X 1/4	24	.624	.610	6	.2500	3/8	3/4	3/8	.500	8-32
SAV-24M187-2A X 1/4	24	.624	.610	6	.2500	3/8	3/4	3/8	.500	8-32
30M187-2A X 1/4	30	.780	.766	6	.2500	3/8	3/4	3/8	.656	8-32
SAV-30M187-2A X 1/4	30	.780	.766	6	.2500	3/8	3/4	3/8	.656	8-32
40M187-2A X 1/4	40	1.040	1.026	6	.2500	3/8	3/4	3/8	.666	8-32
SAV-40M187-2A X 1/4	40	1.040	1.026	6	.2500	3/8	3/4	3/8	.666	8-32
45M187-2A X 1/4	45	1.170	1.156	6	.2500	3/8	3/4	3/8	.796	8-32
SAV-45M187-2A X 1/4	45	1.170	1.156	6	.2500	3/8	3/4	3/8	.796	8-32
50M187-2A X 1/4	50	1.300	1.286	6	.2500	3/8	3/4	3/8	.926	8-32
SAV-50M187-2A X 1/4	50	1.300	1.286	6	.2500	3/8	3/4	3/8	.926	8-32
50M187-2A X 5/16	50	1.300	1.286	6	.3125	3/8	3/4	3/8	.926	8-32
SAV-50M187-2A X 5/16	50	1.300	1.286	6	.3125	3/8	3/4	3/8	.926	8-32
60M187-2A X 1/4	60	1.560	1.546	6	.2500	3/8	3/4	3/8	1.187	8-32
SAV-60M187-2A X 1/4	60	1.560	1.546	6	.2500	3/8	3/4	3/8	1.187	8-32
60M187-2A X 5/16	60	1.560	1.546	6	.3125	3/8	3/4	3/8	1.187	8-32
SAV-60M187-2A X 5/16	60	1.560	1.546	6	.3125	3/8	3/4	3/8	1.187	8-32
70M187-2A X 1/4	70	1.820	1.806	6	.2500	3/8	3/4	3/8	1.150	8-32
SAV-70M187-2A X 1/4	70	1.820	1.806	6	.2500	3/8	3/4	3/8	1.150	8-32
70M187-2A X 3/8	70	1.820	1.806	6	.3750	3/8	3/4	3/8	1.150	10-32
SAV-70M187-2A X 3/8	70	1.820	1.806	6	.3750	3/8	3/4	3/8	1.150	10-32
72M187-2A X 1/4	72	1.872	1.858	6	.2500	3/8	3/4	3/8	1.202	8-32
SAV-72M187-2A X 1/4	72	1.872	1.858	6	.2500	3/8	3/4	3/8	1.202	8-32
72M187-2A X 3/8	72	1.872	1.858	6	.3750	3/8	3/4	3/8	1.202	10-32
SAV-72M187-2A X 3/8	72	1.872	1.858	6	.3750	3/8	3/4	3/8	1.202	10-32
75M187-2A X 1/4	75	1.950	1.936	6	.2500	3/8	3/4	3/8	1.266	8-32
SAV-75M187-2A X 1/4	75	1.950	1.936	6	.2500	3/8	3/4	3/8	1.266	8-32
75M187-2A X 3/8	75	1.950	1.936	6	.3750	3/8	3/4	3/8	1.266	10-32
SAV-75M187-2A X 3/8	75	1.950	1.936	6	.3750	3/8	3/4	3/8	1.266	10-32
80M187-2A X 1/4	80	2.080	2.066	6	.2500	3/8	3/4	3/8	1.396	8-32
SAV-80M187-2A X 1/4	80	2.080	2.066	6	.2500	3/8	3/4	3/8	1.396	8-32
80M187-2A X 3/8	80	2.080	2.066	6	.3750	3/8	3/4	3/8	1.396	10-32
SAV-80M187-2A X 3/8	80	2.080	2.066	6	.3750	3/8	3/4	3/8	1.396	10-32

"SAV-" in front of any standard timing pulley part # represents the Shaft-Saver version. Shaft-Saver pulleys have special setscrews that grip without damage to the shaft and allow easy pulley removal and realignment. For additional information, see our Shaft-Saver Engineering Section.

ALUMINUM WITH CLEAR ANODIZE (RoHS compliant)

FOR BELTS UP TO 3/16" WIDE



TYPE 6

PART NUMBER	NO. OF GROOVES	PITCH DIA	OUTSIDE DIA	TYPE	BORE (+.001) (-.000)	FACE WIDTH	OVERALL LENGTH	HUB PROJ.	HUB DIA	SET SCREWS (2@90°)
84M187-2A X 1/4	84	2.184	2.170	6	.2500	3/8	3/4	3/8	1.500	8-32
SAV-84M187-2A X 1/4	84	2.184	2.170	6	.2500	3/8	3/4	3/8	1.500	8-32
84M187-2A X 3/8	84	2.184	2.170	6	.3750	3/8	3/4	3/8	1.500	10-32
SAV-84M187-2A X 3/8	84	2.184	2.170	6	.3750	3/8	3/4	3/8	1.500	10-32
88M187-2A X 1/4	88	2.288	2.274	6	.2500	3/8	3/4	3/8	1.500	8-32
SAV-88M187-2A X 1/4	88	2.288	2.274	6	.2500	3/8	3/4	3/8	1.500	8-32
88M187-2A X 3/8	88	2.288	2.274	6	.3750	3/8	3/4	3/8	1.500	10-32
SAV-88M187-2A X 3/8	88	2.288	2.274	6	.3750	3/8	3/4	3/8	1.500	10-32
90M187-2A X 1/4	90	2.340	2.326	6	.2500	3/8	3/4	3/8	1.500	8-32
SAV-90M187-2A X 1/4	90	2.340	2.326	6	.2500	3/8	3/4	3/8	1.500	8-32
90M187-2A X 3/8	90	2.340	2.326	6	.3750	3/8	3/4	3/8	1.500	10-32
SAV-90M187-2A X 3/8	90	2.340	2.326	6	.3750	3/8	3/4	3/8	1.500	10-32
96M187-2A X 1/4	96	2.496	2.482	6	.2500	3/8	3/4	3/8	1.500	8-32
SAV-96M187-2A X 1/4	96	2.496	2.482	6	.2500	3/8	3/4	3/8	1.500	8-32
96M187-2A X 3/8	96	2.496	2.482	6	.3750	3/8	3/4	3/8	1.500	10-32
SAV-96M187-2A X 3/8	96	2.496	2.482	6	.3750	3/8	3/4	3/8	1.500	10-32
98M187-2A X 1/4	98	2.548	2.534	6	.2500	3/8	3/4	3/8	1.500	8-32
SAV-98M187-2A X 1/4	98	2.548	2.534	6	.2500	3/8	3/4	3/8	1.500	8-32
98M187-2A X 3/8	98	2.548	2.534	6	.3750	3/8	3/4	3/8	1.500	10-32
SAV-98M187-2A X 3/8	98	2.548	2.534	6	.3750	3/8	3/4	3/8	1.500	10-32
100M187-2A X 1/4	100	2.600	2.586	6	.2500	3/8	3/4	3/8	1.500	8-32
SAV-100M187-2A X 1/4	100	2.600	2.586	6	.2500	3/8	3/4	3/8	1.500	8-32
100M187-2A X 3/8	100	2.600	2.586	6	.3750	3/8	3/4	3/8	1.500	10-32
SAV-100M187-2A X 3/8	100	2.600	2.586	6	.3750	3/8	3/4	3/8	1.500	10-32
108M187-2A X 1/4	108	2.808	2.794	6	.2500	3/8	3/4	3/8	1.500	8-32
SAV-108M187-2A X 1/4	108	2.808	2.794	6	.2500	3/8	3/4	3/8	1.500	8-32
108M187-2A X 3/8	108	2.808	2.794	6	.3750	3/8	3/4	3/8	1.500	10-32
SAV-108M187-2A X 3/8	108	2.808	2.794	6	.3750	3/8	3/4	3/8	1.500	10-32
120M187-2A X 1/4	120	3.120	3.106	6	.2500	3/8	3/4	3/8	1.500	8-32
SAV-120M187-2A X 1/4	120	3.120	3.106	6	.2500	3/8	3/4	3/8	1.500	8-32
120M187-2A X 3/8	120	3.120	3.106	6	.3750	3/8	3/4	3/8	1.500	10-32
SAV-120M187-2A X 3/8	120	3.120	3.106	6	.3750	3/8	3/4	3/8	1.500	10-32

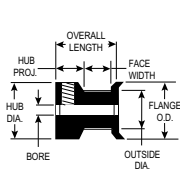
“SAV-” in front of any standard timing pulley part # represents the Shaft-Saver version. Shaft-Saver pulleys have special setscrews that grip without damage to the shaft and allow easy pulley removal and realignment. For additional information, see our Shaft-Saver Engineering Section.

TIMING BELT PULLEYS

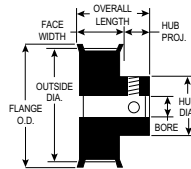
.0816" (40 D.P.) PITCH

ALUMINUM WITH CLEAR ANODIZE (RoHS compliant)

FOR BELTS UP TO 5/16" WIDE



TYPE 6FC



TYPE 6F



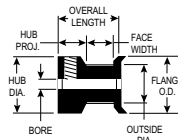
PART NUMBER	NO. OF GROOVES	PITCH DIA.	OUTSIDE DIA.	FLANGE O.D.	TYPE	BORE (+.001 / -.000)	FACE WIDTH	OVERALL LENGTH	HUB PROJ.	HUB DIA.	SET SCREWS
10M312-6A X 3/32	10	.260	.246	.425	6FC	.0938	.345	5/8	15/64	.425	2-64(1)
SAV-10M312-6A X 3/32	10	.260	.246	.425	6FC	.0938	.345	5/8	15/64	.425	2-64(1)
10M312-6A X 1/8	10	.260	.246	.425	6FC	.1250	.345	5/8	15/64	.425	4-40(1)
SAV-10M312-6A X 1/8	10	.260	.246	.425	6FC	.1250	.345	5/8	15/64	.425	4-40(1)
11M312-6A X 3/32	11	.286	.272	.450	6FC	.0938	.345	5/8	15/64	.450	2-64(1)
SAV-11M312-6A X 3/32	11	.286	.272	.450	6FC	.0938	.345	5/8	15/64	.450	2-64(1)
11M312-6A X 1/8	11	.286	.272	.450	6FC	.1250	.345	5/8	15/64	.450	4-40(1)
SAV-11M312-6A X 1/8	11	.286	.272	.450	6FC	.1250	.345	5/8	15/64	.450	4-40(1)
12M312-6A X 3/32	12	.312	.298	.480	6FC	.0938	.345	5/8	15/64	.480	2-64(1)
SAV-12M312-6A X 3/32	12	.312	.298	.480	6FC	.0938	.345	5/8	15/64	.480	2-64(1)
12M312-6A X 1/8	12	.312	.298	.480	6FC	.1250	.345	5/8	15/64	.480	4-40(1)
SAV-12M312-6A X 1/8	12	.312	.298	.480	6FC	.1250	.345	5/8	15/64	.480	4-40(1)
13M312-6A X 1/8	13	.338	.324	.505	6FC	.1250	.345	5/8	15/64	.505	4-40(1)
SAV-13M312-6A X 1/8	13	.338	.324	.505	6FC	.1250	.345	5/8	15/64	.505	4-40(1)
14M312-6A X 1/8	14	.364	.350	.530	6FC	.1250	.345	5/8	15/64	.530	4-40(1)
SAV-14M312-6A X 1/8	14	.364	.350	.530	6FC	.1250	.345	5/8	15/64	.530	4-40(1)
15M312-6A X 1/8	15	.390	.376	.555	6FC	.1250	.345	5/8	15/64	.555	4-40(1)
SAV-15M312-6A X 1/8	15	.390	.376	.555	6FC	.1250	.345	5/8	15/64	.555	4-40(1)
15M312-6A X 3/16	15	.390	.376	.555	6FC	.1875	.345	5/8	15/64	.555	4-40(1)
SAV-15M312-6A X 3/16	15	.390	.376	.555	6FC	.1875	.345	5/8	15/64	.555	4-40(1)
16M312-6A X 1/8	16	.416	.402	.580	6FC	.1250	.345	5/8	15/64	.580	4-40(1)
SAV-16M312-6A X 1/8	16	.416	.402	.580	6FC	.1250	.345	5/8	15/64	.580	4-40(1)
16M312-6A X 3/16	16	.416	.402	.580	6FC	.1875	.345	5/8	15/64	.580	4-40(1)
SAV-16M312-6A X 3/16	16	.416	.402	.580	6FC	.1875	.345	5/8	15/64	.580	4-40(1)
18M312-6A X 1/4	18	.468	.454	.635	6FC	.2500	.345	5/8	15/64	.635	8-32(2)
SAV-18M312-6A X 1/4	18	.468	.454	.635	6FC	.2500	.345	5/8	15/64	.635	8-32(2)
20M312-6A X 1/4	20	.520	.506	.685	6FC	.2500	.345	5/8	15/64	.685	8-32(2)
SAV-20M312-6A X 1/4	20	.520	.506	.685	6FC	.2500	.345	5/8	15/64	.685	8-32(2)
21M312-6A X 1/4	21	.546	.532	.710	6FC	.2500	.345	5/8	15/64	.710	8-32(2)
SAV-21M312-6A X 1/4	21	.546	.532	.710	6FC	.2500	.345	5/8	15/64	.710	8-32(2)
22M312-6A X 1/4	22	.572	.558	.740	6FC	.2500	.345	5/8	15/64	.740	8-32(2)
SAV-22M312-6A X 1/4	22	.572	.558	.740	6FC	.2500	.345	5/8	15/64	.740	8-32(2)
18M312-1A X 1/8	18	.468	.454	.635	6F	.1250	.449	11/16	15/64	.312	4-40(2)
SAV-18M312-1A X 1/8	18	.468	.454	.635	6F	.1250	.449	11/16	15/64	.312	4-40(2)
18M312-1A X 3/16	18	.468	.454	.635	6F	.1875	.449	11/16	15/64	.312	6-40(2)
SAV-18M312-1A X 3/16	18	.468	.454	.635	6F	.1875	.449	11/16	15/64	.312	6-40(2)

"SAV-" in front of any standard timing pulley part # represents the Shaft-Saver version. Shaft-Saver pulleys have special setscrews that grip without damage to the shaft and allow easy pulley removal and realignment. For additional information, see our Shaft-Saver Engineering Section.

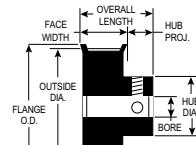


ALUMINUM WITH CLEAR ANODIZE (RoHS compliant)

FOR BELTS UP TO 5/16" WIDE



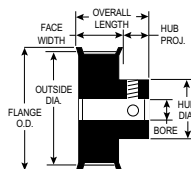
TYPE 6FC



TYPE 6F

PART NUMBER	NO. OF GROOVES	PITCH DIA.	OUTSIDE DIA.	FLANGE O.D.	BORE TYPE	BORE (+.001 / -.000)		OVERALL LENGTH	HUB PROJ.	HUB DIA.	SET SCREWS
						FACE WIDTH	FLANGE O.D.				
20M312-1A X 1/8	20	.520	.506	.685	6F	.1250	.449	11/16	15/64	.364	4-40(2)
SAV-20M312-1A X 1/8	20	.520	.506	.685	6F	.1250	.449	11/16	15/64	.364	4-40(2)
20M312-1A X 3/16	20	.520	.506	.685	6F	.1875	.449	11/16	15/64	.364	6-40(2)
SAV-20M312-1A X 3/16	20	.520	.506	.685	6F	.1875	.449	11/16	15/64	.364	6-40(2)
21M312-1A X 1/8	21	.546	.532	.710	6F	.1250	.449	11/16	15/64	.390	4-40(2)
SAV-21M312-1A X 1/8	21	.546	.532	.710	6F	.1250	.449	11/16	15/64	.390	4-40(2)
21M312-1A X 3/16	21	.546	.532	.710	6F	.1875	.449	11/16	15/64	.390	6-40(2)
SAV-21M312-1A X 3/16	21	.546	.532	.710	6F	.1875	.449	11/16	15/64	.390	6-40(2)
22M312-1A X 1/8	22	.572	.558	.740	6F	.1250	.449	11/16	15/64	.390	4-40(2)
SAV-22M312-1A X 1/8	22	.572	.558	.740	6F	.1250	.449	11/16	15/64	.390	4-40(2)
22M312-1A X 3/16	22	.572	.558	.740	6F	.1875	.449	11/16	15/64	.390	6-40(2)
SAV-22M312-1A X 3/16	22	.572	.558	.740	6F	.1875	.449	11/16	15/64	.390	6-40(2)
24M312-1A X 3/16	24	.624	.610	.790	6F	.1875	.449	3/4	19/64	.442	6-40(2)
SAV-24M312-1A X 3/16	24	.624	.610	.790	6F	.1875	.449	3/4	19/64	.442	6-40(2)
24M312-1A X 1/4	24	.624	.610	.790	6F	.2500	.449	3/4	19/64	.442	6-40(2)
SAV-24M312-1A X 1/4	24	.624	.610	.790	6F	.2500	.449	3/4	19/64	.442	6-40(2)
25M312-1A X 3/16	25	.650	.636	.815	6F	.1875	.449	3/4	19/64	.468	6-40(2)
SAV-25M312-1A X 3/16	25	.650	.636	.815	6F	.1875	.449	3/4	19/64	.468	6-40(2)
25M312-1A X 1/4	25	.650	.636	.815	6F	.2500	.449	3/4	19/64	.468	6-40(2)
SAV-25M312-1A X 1/4	25	.650	.636	.815	6F	.2500	.449	3/4	19/64	.468	6-40(2)
26M312-1A X 3/16	26	.676	.662	.840	6F	.1875	.449	3/4	19/64	.494	6-40(2)
SAV-26M312-1A X 3/16	26	.676	.662	.840	6F	.1875	.449	3/4	19/64	.494	6-40(2)
26M312-1A X 1/4	26	.676	.662	.840	6F	.2500	.449	3/4	19/64	.494	6-40(2)
SAV-26M312-1A X 1/4	26	.676	.662	.840	6F	.2500	.449	3/4	19/64	.494	6-40(2)
28M312-1A X 3/16	28	.728	.714	.895	6F	.1875	.449	3/4	19/64	.494	6-40(2)
SAV-28M312-1A X 3/16	28	.728	.714	.895	6F	.1875	.449	3/4	19/64	.494	6-40(2)
28M312-1A X 1/4	28	.728	.714	.895	6F	.2500	.449	3/4	19/64	.494	6-40(2)
SAV-28M312-1A X 1/4	28	.728	.714	.895	6F	.2500	.449	3/4	19/64	.494	6-40(2)

“SAV-” in front of any standard timing pulley part # represents the Shaft-Saver version. Shaft-Saver pulleys have special setscrews that grip without damage to the shaft and allow easy pulley removal and realignment. For additional information, see our Shaft-Saver Engineering Section.



TYPE 6F

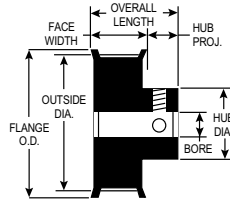


PART NUMBER	NO. OF GROOVES	PITCH DIA.	OUTSIDE DIA.	FLANGE O.D.	TYPE	BORE (+001) (-.000)	FACE WIDTH	OVERALL LENGTH	HUB PROJ.	HUB DIA.	SET SCREWS
30M312-1A X 3/16	30	.780	.766	.945	6F	.1875	.449	3/4	19/64	.546	6-40(2)
SAV-30M312-1A X 3/16	30	.780	.766	.945	6F	.1875	.449	3/4	19/64	.546	6-40(2)
30M312-1A X 1/4	30	.780	.766	.945	6F	.2500	.449	3/4	19/64	.546	8-32(2)
SAV-30M312-1A X 1/4	30	.780	.766	.945	6F	.2500	.449	3/4	19/64	.546	8-32(2)
32M312-1A X 3/16	32	.832	.818	1.000	6F	.1875	.449	3/4	19/64	.598	6-40(2)
SAV-32M312-1A X 3/16	32	.832	.818	1.000	6F	.1875	.449	3/4	19/64	.598	6-40(2)
32M312-1A X 1/4	32	.832	.818	1.000	6F	.2500	.449	3/4	19/64	.598	8-32(2)
SAV-32M312-1A X 1/4	32	.832	.818	1.000	6F	.2500	.449	3/4	19/64	.598	8-32(2)
33M312-1A X 3/16	33	.858	.844	1.025	6F	.1875	.449	3/4	19/64	.624	6-40(2)
SAV-33M312-1A X 3/16	33	.858	.844	1.025	6F	.1875	.449	3/4	19/64	.624	6-40(2)
33M312-1A X 1/4	33	.858	.844	1.025	6F	.2500	.449	3/4	19/64	.624	8-32(2)
SAV-33M312-1A X 1/4	33	.858	.844	1.025	6F	.2500	.449	3/4	19/64	.624	8-32(2)
34M312-1A X 3/16	34	.884	.870	1.050	6F	.1875	.449	3/4	19/64	.624	6-40(2)
SAV-34M312-1A X 3/16	34	.884	.870	1.050	6F	.1875	.449	3/4	19/64	.624	6-40(2)
34M312-1A X 1/4	34	.884	.870	1.050	6F	.2500	.449	3/4	19/64	.624	8-32(2)
SAV-34M312-1A X 1/4	34	.884	.870	1.050	6F	.2500	.449	3/4	19/64	.624	8-32(2)
35M312-1A X 3/16	35	.910	.896	1.080	6F	.1875	.449	3/4	19/64	.650	6-40(2)
SAV-35M312-1A X 3/16	35	.910	.896	1.080	6F	.1875	.449	3/4	19/64	.650	6-40(2)
35M312-1A X 1/4	35	.910	.896	1.080	6F	.2500	.449	3/4	19/64	.650	8-32(2)
SAV-35M312-1A X 1/4	35	.910	.896	1.080	6F	.2500	.449	3/4	19/64	.650	8-32(2)
36M312-1A X 3/16	36	.936	.922	1.105	6F	.1875	.449	3/4	19/64	.676	6-40(2)
SAV-36M312-1A X 3/16	36	.936	.922	1.105	6F	.1875	.449	3/4	19/64	.676	6-40(2)
36M312-1A X 1/4	36	.936	.922	1.105	6F	.2500	.449	3/4	19/64	.676	8-32(2)
SAV-36M312-1A X 1/4	36	.936	.922	1.105	6F	.2500	.449	3/4	19/64	.676	8-32(2)
38M312-1A X 1/4	38	.988	.974	1.155	6F	.2500	.449	3/4	19/64	.728	8-32(2)
SAV-38M312-1A X 1/4	38	.988	.974	1.155	6F	.2500	.449	3/4	19/64	.728	8-32(2)
38M312-1A X 5/16	38	.988	.974	1.155	6F	.3125	.449	3/4	19/64	.728	8-32(2)
SAV-38M312-1A X 5/16	38	.988	.974	1.155	6F	.3125	.449	3/4	19/64	.728	8-32(2)
40M312-1A X 1/4	40	1.040	1.026	1.210	6F	.2500	.465	25/32	5/16	.754	8-32(2)
SAV-40M312-1A X 1/4	40	1.040	1.026	1.210	6F	.2500	.465	25/32	5/16	.754	8-32(2)
40M312-1A X 5/16	40	1.040	1.026	1.210	6F	.3125	.465	25/32	5/16	.754	8-32(2)
SAV-40M312-1A X 5/16	40	1.040	1.026	1.210	6F	.3125	.465	25/32	5/16	.754	8-32(2)
42M312-1A X 1/4	42	1.092	1.078	1.260	6F	.2500	.465	25/32	5/16	.806	8-32(2)
SAV-42M312-1A X 1/4	42	1.092	1.078	1.260	6F	.2500	.465	25/32	5/16	.806	8-32(2)
42M312-1A X 5/16	42	1.092	1.078	1.260	6F	.3125	.465	25/32	5/16	.806	8-32(2)
SAV-42M312-1A X 5/16	42	1.092	1.078	1.260	6F	.3125	.465	25/32	5/16	.806	8-32(2)
44M312-1A X 1/4	44	1.144	1.130	1.315	6F	.2500	.465	25/32	5/16	.858	8-32(2)
SAV-44M312-1A X 1/4	44	1.144	1.130	1.315	6F	.2500	.465	25/32	5/16	.858	8-32(2)

"SAV-" in front of any standard timing pulley part # represents the Shaft-Saver version. Shaft-Saver pulleys have special setscrews that grip without damage to the shaft and allow easy pulley removal and realignment. For additional information, see our Shaft-Saver Engineering Section.

ALUMINUM WITH CLEAR ANODIZE (RoHS compliant)

FOR BELTS UP TO 5/16" WIDE



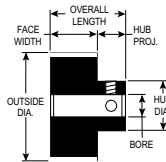
TYPE 6F

PART NUMBER	NO. OF GROOVES	PITCH DIA.	OUTSIDE DIA.	FLANGE O.D.	BORE TYPE	FACE (+.001)	OVERALL LENGTH	HUB PROJ.	HUB DIA.	SET SCREWS	
											FACE WIDTH
44M312-1A X 5/16	44	1.144	1.130	1.315	6F	.3125	.465	25/32	5/16	.858	8-32(2)
SAV-44M312-1A X 5/16	44	1.144	1.130	1.315	6F	.3125	.465	25/32	5/16	.858	8-32(2)
45M312-1A X 1/4	45	1.170	1.156	1.340	6F	.2500	.465	25/32	5/16	.884	8-32(2)
SAV-45M312-1A X 1/4	45	1.170	1.156	1.340	6F	.2500	.465	25/32	5/16	.884	8-32(2)
45M312-1A X 5/16	45	1.170	1.156	1.340	6F	.3125	.465	25/32	5/16	.884	8-32(2)
SAV-45M312-1A X 5/16	45	1.170	1.156	1.340	6F	.3125	.465	25/32	5/16	.884	8-32(2)
48M312-1A X 1/4	48	1.248	1.234	1.420	6F	.2500	.465	25/32	5/16	.936	8-32(2)
SAV-48M312-1A X 1/4	48	1.248	1.234	1.420	6F	.2500	.465	25/32	5/16	.936	8-32(2)
48M312-1A X 5/16	48	1.248	1.234	1.420	6F	.3125	.465	25/32	5/16	.936	8-32(2)
SAV-48M312-1A X 5/16	48	1.248	1.234	1.420	6F	.3125	.465	25/32	5/16	.936	8-32(2)
50M312-1A X 1/4	50	1.300	1.286	1.470	6F	.2500	.465	25/32	5/16	.988	8-32(2)
SAV-50M312-1A X 1/4	50	1.300	1.286	1.470	6F	.2500	.465	25/32	5/16	.988	8-32(2)
50M312-1A X 5/16	50	1.300	1.286	1.470	6F	.3125	.465	25/32	5/16	.988	8-32(2)
SAV-50M312-1A X 5/16	50	1.300	1.286	1.470	6F	.3125	.465	25/32	5/16	.988	8-32(2)
54M312-1A X 1/4	54	1.404	1.390	1.575	6F	.2500	.465	25/32	5/16	1.066	8-32(2)
SAV-54M312-1A X 1/4	54	1.404	1.390	1.575	6F	.2500	.465	25/32	5/16	1.066	8-32(2)
54M312-1A X 5/16	54	1.404	1.390	1.575	6F	.3125	.465	25/32	5/16	1.066	8-32(2)
SAV-54M312-1A X 5/16	54	1.404	1.390	1.575	6F	.3125	.465	25/32	5/16	1.066	8-32(2)
60M312-1A X 1/4	60	1.560	1.546	1.730	6F	.2500	.465	25/32	5/16	1.222	8-32(2)
SAV-60M312-1A X 1/4	60	1.560	1.546	1.730	6F	.2500	.465	25/32	5/16	1.222	8-32(2)
60M312-1A X 5/16	60	1.560	1.546	1.730	6F	.3125	.465	25/32	5/16	1.222	8-32(2)
SAV-60M312-1A X 5/16	60	1.560	1.546	1.730	6F	.3125	.465	25/32	5/16	1.222	8-32(2)

“SAV-” in front of any standard timing pulley part # represents the Shaft-Saver version. Shaft-Saver pulleys have special setscrews that grip without damage to the shaft and allow easy pulley removal and realignment. For additional information, see our Shaft-Saver Engineering Section.

ALUMINUM WITH CLEAR ANODIZE (RoHS compliant)

FOR BELTS UP TO 5/16" WIDE



TYPE 6



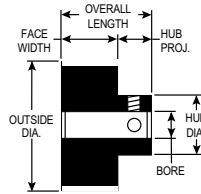
PART NUMBER	NO. OF GROOVES	PITCH DIA.	OUTSIDE DIA.	TYPE	BORE (+.001 / -.000)	FACE WIDTH	OVERALL LENGTH	HUB PROJ.	HUB DIA.	SET SCREWS (2@90°)
20M312-2A X 3/16	20	.520	.506	6	.1875	1/2	7/8	3/8	.436	6-40
SAV-20M312-2A X 3/16	20	.520	.506	6	.1875	1/2	7/8	3/8	.436	6-40
20M312-2A X 1/4	20	.520	.506	6	.2500	1/2	7/8	3/8	.436	6-40
SAV-20M312-2A X 1/4	20	.520	.506	6	.2500	1/2	7/8	3/8	.436	6-40
24M312-2A X 3/16	24	.624	.610	6	.1875	1/2	7/8	3/8	.500	6-40
SAV-24M312-2A X 3/16	24	.624	.610	6	.1875	1/2	7/8	3/8	.500	6-40
24M312-2A X 1/4	24	.624	.610	6	.2500	1/2	7/8	3/8	.500	8-32
SAV-24M312-2A X 1/4	24	.624	.610	6	.2500	1/2	7/8	3/8	.500	8-32
30M312-2A X 1/4	30	.780	.766	6	.2500	1/2	7/8	3/8	.656	8-32
SAV-30M312-2A X 1/4	30	.780	.766	6	.2500	1/2	7/8	3/8	.656	8-32
40M312-2A X 1/4	40	1.040	1.026	6	.2500	1/2	7/8	3/8	.666	8-32
SAV-40M312-2A X 1/4	40	1.040	1.026	6	.2500	1/2	7/8	3/8	.666	8-32
45M312-2A X 1/4	45	1.170	1.156	6	.2500	1/2	7/8	3/8	.796	8-32
SAV-45M312-2A X 1/4	45	1.170	1.156	6	.2500	1/2	7/8	3/8	.796	8-32
50M312-2A X 1/4	50	1.300	1.286	6	.2500	1/2	7/8	3/8	.926	8-32
SAV-50M312-2A X 1/4	50	1.300	1.286	6	.2500	1/2	7/8	3/8	.926	8-32
50M312-2A X 5/16	50	1.300	1.286	6	.3125	1/2	7/8	3/8	.926	8-32
SAV-50M312-2A X 5/16	50	1.300	1.286	6	.3125	1/2	7/8	3/8	.926	8-32
60M312-2A X 1/4	60	1.560	1.546	6	.2500	1/2	7/8	3/8	1.187	8-32
SAV-60M312-2A X 1/4	60	1.560	1.546	6	.2500	1/2	7/8	3/8	1.187	8-32
60M312-2A X 5/16	60	1.560	1.546	6	.3125	1/2	7/8	3/8	1.187	8-32
SAV-60M312-2A X 5/16	60	1.560	1.546	6	.3125	1/2	7/8	3/8	1.187	8-32
70M312-2A X 1/4	70	1.820	1.806	6	.2500	1/2	7/8	3/8	1.150	8-32
SAV-70M312-2A X 1/4	70	1.820	1.806	6	.2500	1/2	7/8	3/8	1.150	8-32
70M312-2A X 5/16	70	1.820	1.806	6	.3125	1/2	7/8	3/8	1.150	10-32
SAV-70M312-2A X 5/16	70	1.820	1.806	6	.3125	1/2	7/8	3/8	1.150	10-32
72M312-2A X 1/4	72	1.872	1.858	6	.2500	1/2	7/8	3/8	1.202	8-32
SAV-72M312-2A X 1/4	72	1.872	1.858	6	.2500	1/2	7/8	3/8	1.202	8-32
72M312-2A X 3/8	72	1.872	1.858	6	.3750	1/2	7/8	3/8	1.202	10-32
SAV-72M312-2A X 3/8	72	1.872	1.858	6	.3750	1/2	7/8	3/8	1.202	10-32
75M312-2A X 1/4	75	1.950	1.936	6	.2500	1/2	7/8	3/8	1.266	8-32
SAV-75M312-2A X 1/4	75	1.950	1.936	6	.2500	1/2	7/8	3/8	1.266	8-32
75M312-2A X 3/8	75	1.950	1.936	6	.3750	1/2	7/8	3/8	1.266	10-32
SAV-75M312-2A X 3/8	75	1.950	1.936	6	.3750	1/2	7/8	3/8	1.266	10-32
80M312-2A X 1/4	80	2.080	2.066	6	.2500	1/2	7/8	3/8	1.396	8-32
SAV-80M312-2A X 1/4	80	2.080	2.066	6	.2500	1/2	7/8	3/8	1.396	8-32
80M312-2A X 3/8	80	2.080	2.066	6	.3750	1/2	7/8	3/8	1.396	10-32
SAV-80M312-2A X 3/8	80	2.080	2.066	6	.3750	1/2	7/8	3/8	1.396	10-32

“SAV-” in front of any standard timing pulley part # represents the Shaft-Saver version. Shaft-Saver pulleys have special setscrews that grip without damage to the shaft and allow easy pulley removal and realignment. For additional information, see our Shaft-Saver Engineering Section.



ALUMINUM WITH CLEAR ANODIZE (RoHS compliant)

FOR BELTS UP TO 5/16" WIDE

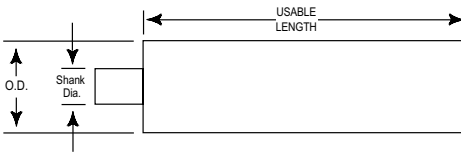


TYPE 6

PART NUMBER	NO. OF GROOVES	PITCH DIA	OUTSIDE DIA	TYPE	BORE (+.001) (-.000)	FACE WIDTH	OVERALL LENGTH	HUB PROJ.	HUB DIA	SET SCREWS (2@90°)
84M312-2A X 1/4	84	2.184	2.170	6	.2500	1/2	7/8	3/8	1.500	8-32
SAV-84M312-2A X 1/4	84	2.184	2.170	6	.2500	1/2	7/8	3/8	1.500	8-32
84M312-2A X 3/8	84	2.184	2.170	6	.3750	1/2	7/8	3/8	1.500	10-32
SAV-84M312-2A X 3/8	84	2.184	2.170	6	.3750	1/2	7/8	3/8	1.500	10-32
88M312-2A X 1/4	88	2.288	2.274	6	.2500	1/2	7/8	3/8	1.500	8-32
SAV-88M312-2A X 1/4	88	2.288	2.274	6	.2500	1/2	7/8	3/8	1.500	8-32
88M312-2A X 3/8	88	2.288	2.274	6	.3750	1/2	7/8	3/8	1.500	10-32
SAV-88M312-2A X 3/8	88	2.288	2.274	6	.3750	1/2	7/8	3/8	1.500	10-32
90M312-2A X 1/4	90	2.340	2.326	6	.2500	1/2	7/8	3/8	1.500	8-32
SAV-90M312-2A X 1/4	90	2.340	2.326	6	.2500	1/2	7/8	3/8	1.500	8-32
90M312-2A X 3/8	90	2.340	2.326	6	.3750	1/2	7/8	3/8	1.500	10-32
SAV-90M312-2A X 3/8	90	2.340	2.326	6	.3750	1/2	7/8	3/8	1.500	10-32
96M312-2A X 1/4	96	2.496	2.482	6	.2500	1/2	7/8	3/8	1.500	8-32
SAV-96M312-2A X 1/4	96	2.496	2.482	6	.2500	1/2	7/8	3/8	1.500	8-32
96M312-2A X 3/8	96	2.496	2.482	6	.3750	1/2	7/8	3/8	1.500	10-32
SAV-96M312-2A X 3/8	96	2.496	2.482	6	.3750	1/2	7/8	3/8	1.500	10-32
98M312-2A X 1/4	98	2.548	2.534	6	.2500	1/2	7/8	3/8	1.500	8-32
SAV-98M312-2A X 1/4	98	2.548	2.534	6	.2500	1/2	7/8	3/8	1.500	8-32
98M312-2A X 3/8	98	2.548	2.534	6	.3750	1/2	7/8	3/8	1.500	10-32
SAV-98M312-2A X 3/8	98	2.548	2.534	6	.3750	1/2	7/8	3/8	1.500	10-32
100M312-2A X 5/16	100	2.600	2.586	6	.3125	1/2	7/8	3/8	1.500	8-32
SAV-100M312-2A X 5/16	100	2.600	2.586	6	.3125	1/2	7/8	3/8	1.500	8-32
100M312-2A X 3/8	100	2.600	2.586	6	.3750	1/2	7/8	3/8	1.500	10-32
SAV-100M312-2A X 3/8	100	2.600	2.586	6	.3750	1/2	7/8	3/8	1.500	10-32
108M312-2A X 5/16	108	2.808	2.794	6	.3125	1/2	7/8	3/8	1.500	8-32
SAV-108M312-2A X 5/16	108	2.808	2.794	6	.3125	1/2	7/8	3/8	1.500	8-32
108M312-2A X 3/8	108	2.808	2.794	6	.3750	1/2	7/8	3/8	1.500	10-32
SAV-108M312-2A X 3/8	108	2.808	2.794	6	.3750	1/2	7/8	3/8	1.500	10-32
110M312-2A X 3/8	110	2.860	2.846	6	.3750	1/2	7/8	3/8	1.500	10-32
SAV-110M312-2A X 3/8	110	2.860	2.846	6	.3750	1/2	7/8	3/8	1.500	10-32
120M312-2A X 5/16	120	3.120	3.106	6	.3125	1/2	7/8	3/8	1.500	8-32
SAV-120M312-2A X 5/16	120	3.120	3.106	6	.3125	1/2	7/8	3/8	1.500	8-32
120M312-2A X 3/8	120	3.120	3.106	6	.3750	1/2	7/8	3/8	1.500	10-32
SAV-120M312-2A X 3/8	120	3.120	3.106	6	.3750	1/2	7/8	3/8	1.500	10-32
130M312-2A X 3/8	130	3.380	3.366	6	.3750	1/2	7/8	3/8	1.750	10-32
SAV-130M312-2A X 3/8	130	3.380	3.366	6	.3750	1/2	7/8	3/8	1.750	10-32
140M312-2A X 3/8	140	3.640	3.626	6	.3750	1/2	7/8	3/8	1.750	10-32
SAV-140M312-2A X 3/8	140	3.640	3.626	6	.3750	1/2	7/8	3/8	1.750	10-32
150M312-2A X 3/8	150	3.900	3.886	6	.3750	1/2	7/8	3/8	2.000	10-32
SAV-150M312-2A X 3/8	150	3.900	3.886	6	.3750	1/2	7/8	3/8	2.000	10-32

"SAV-" in front of any standard timing pulley part # represents the Shaft-Saver version. Shaft-Saver pulleys have special setscrews that grip without damage to the shaft and allow easy pulley removal and realignment. For additional information, see our Shaft-Saver Engineering Section.

ALUMINUM 6061-T6 (RoHS compliant)

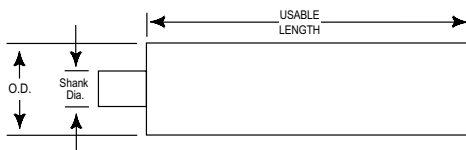
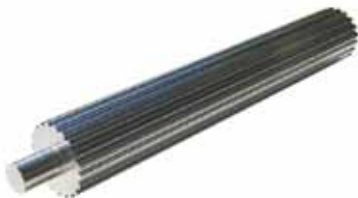


PART NUMBER	NO. OF GROOVES	PITCH DIA.	OUTSIDE DIA.	SHANK DIA.	USEABLE LENGTH
10M-P-2A	10	.260	.246	5/16	2"
11M-P-2A	11	.286	.272	5/16	2"
12M-P-2A	12	.312	.298	5/16	2"
13M-P-2A	13	.338	.324	3/8	2"
14M-P-3A	14	.364	.350	3/8	3"
15M-P-3A	15	.390	.376	7/16	3"
16M-P-3A	16	.416	.402	7/16	3"
17M-P-3A	17	.442	.428	7/16	3"
18M-P-3A	18	.468	.454	1/2	3"
19M-P-3A	19	.494	.480	1/2	3"
20M-P-4A	20	.520	.506	3/8	4"
21M-P-4A	21	.546	.532	3/8	4"
22M-P-4A	22	.572	.558	3/8	4"
23M-P-4A	23	.598	.584	3/8	4"
24M-P-5A	24	.624	.610	1/2	5"
25M-P-5A	25	.650	.636	1/2	5"
26M-P-5A	26	.676	.662	1/2	5"
27M-P-5A	27	.702	.688	1/2	5"
28M-P-5A	28	.728	.714	1/2	5"
29M-P-5A	29	.754	.740	1/2	5"
30M-P-6A	30	.780	.766	1/2	6"
31M-P-6A	31	.806	.792	1/2	6"
32M-P-6A	32	.832	.818	1/2	6"
33M-P-6A	33	.858	.844	1/2	6"
34M-P-6A	34	.884	.870	1/2	6"
35M-P-6A	35	.910	.896	1/2	6"
36M-P-6A	36	.936	.922	1/2	6"
37M-P-6A	37	.962	.948	1/2	6"
38M-P-6A	38	.988	.974	1/2	6"
39M-P-6A	39	1.014	1.000	1/2	6"

York also manufactures custom pulleys and complete assemblies
 email: support@york-ind.com web: www.york-ind.com



ALUMINUM 6061-T6 (RoHS compliant)

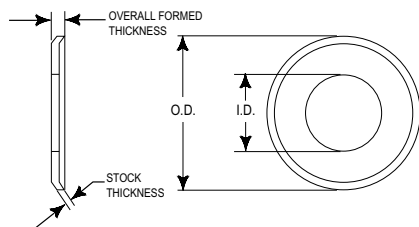


PART NUMBER	NO. OF GROOVES	PITCH DIA.	OUTSIDE DIA.	SHANK DIA.	USEABLE LENGTH
40M-P-7A	40	1.040	1.026	1/2	7"
42M-P-7A	42	1.092	1.078	1/2	7"
44M-P-7A	44	1.144	1.130	1/2	7"
45M-P-7A	45	1.170	1.156	1/2	7"
48M-P-7A	48	1.248	1.234	1/2	7"
50M-P-7A	50	1.300	1.286	1/2	7"
51M-P-7A	51	1.326	1.312	1/2	7"
52M-P-7A	52	1.352	1.338	1/2	7"
54M-P-7A	54	1.404	1.390	1/2	7"
55M-P-7A	55	1.430	1.416	1/2	7"
56M-P-7A	56	1.456	1.442	1/2	7"
57M-P-7A	57	1.482	1.468	1/2	7"
60M-P-8A	60	1.560	1.546	1/2	8"
64M-P-8A	64	1.664	1.650	1/2	8"
65M-P-8A	65	1.690	1.676	1/2	8"
66M-P-8A	66	1.716	1.702	1/2	8"
70M-P-8A	70	1.820	1.806	1/2	8"
72M-P-8A	72	1.872	1.858	1/2	8"
75M-P-8A	75	1.950	1.936	1/2	8"
80M-P-8A	80	2.080	2.066	3/4	8"
82M-P-8A	82	2.132	2.118	3/4	8"
84M-P-8A	84	2.184	2.170	3/4	8"
88M-P-8A	88	2.288	2.274	3/4	8"
90M-P-8A	90	2.340	2.326	3/4	8"
96M-P-8A	96	2.496	2.482	3/4	8"
98M-P-8A	98	2.548	2.534	3/4	8"
100M-P-8A	100	2.600	2.586	3/4	8"
102M-P-8A	102	2.652	2.638	3/4	8"
108M-P-8A	108	2.808	2.794	3/4	8"
110M-P-8A	110	2.860	2.846	3/4	8"
120M-P-8A	120	3.120	3.106	3/4	8"
130M-P-8A	130	3.380	3.366	3/4	8"
140M-P-8A	140	3.640	3.626	3/4	8"
150M-P-8A	150	3.900	3.886	3/4	8"

PULLEY FLANGES

.0816" (40 D.P.) PITCH

ALUMINUM (RoHS compliant)



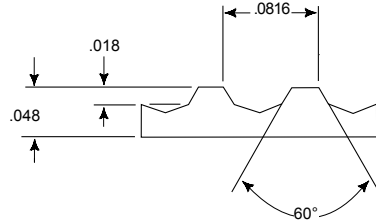
PART NUMBER	INSIDE DIA.	OUTSIDE DIA.	STOCK THICKNESS	OVERALL FORMED THICKNESS
10M-F1A	.188	.425	.025	.045
11M-F1A	.214	.450	.025	.045
12M-F1A	.218	.480	.025	.045
13M-F1A	.244	.505	.025	.045
14M-F1A	.270	.530	.025	.045
15M-F1A	.296	.555	.025	.045
16M-F1A	.322	.580	.025	.045
18M-F1A	.374	.635	.032	.052
20M-F1A	.426	.685	.032	.052
21M-F1A	.452	.710	.032	.052
22M-F1A	.452	.740	.032	.052
24M-F1A	.504	.790	.032	.052
25M-F1A	.530	.815	.032	.052
26M-F1A	.556	.840	.032	.052
28M-F1A	.574	.895	.032	.052
30M-F1A	.626	.945	.032	.052
32M-F1A	.678	1.000	.032	.052
33M-F1A	.704	1.025	.032	.052
34M-F1A	.722	1.050	.032	.052
35M-F1A	.748	1.080	.032	.052
36M-F1A	.774	1.105	.032	.052
38M-F1A	.826	1.155	.032	.052
40M-F1A	.874	1.210	.040	.060
42M-F1A	.926	1.260	.040	.060
44M-F1A	.978	1.315	.040	.060
45M-F1A	1.004	1.340	.040	.060
48M-F1A	1.058	1.420	.040	.060
50M-F1A	1.110	1.470	.040	.060
54M-F1A	1.200	1.575	.040	.060
60M-F1A	1.356	1.730	.040	.060

York also manufactures custom pulleys and complete assemblies
 email: support@york-ind.com web: www.york-ind.com



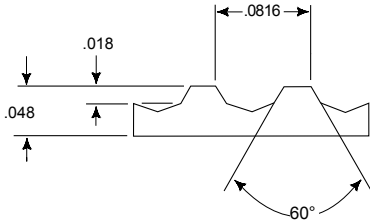
URETHANE, Polyester Cord (RoHS compliant)

If you don't see the belt you need – call York!



BELT NUMBER	WIDTHS				PITCH LENGTH	NO. OF TEETH	BELT NUMBER	WIDTHS				PITCH LENGTH	NO. OF TEETH
	1/8"	3/16"	1/4"	5/16"				1/8"	3/16"	1/4"	5/16"		
25T81-P	1/8	3/16	1/4	5/16	2.040	25	91T81-P	1/8	3/16	1/4	5/16	7.426	91
30T81-P	1/8	3/16	1/4	5/16	2.448	30	94T81-P	1/8	3/16	1/4	5/16	7.670	94
33T81-P	1/8	3/16	1/4	5/16	2.693	33	95T81-P	1/8	3/16	1/4	5/16	7.752	95
40T81-P	1/8	3/16	1/4	5/16	3.264	40	96T81-P	1/8	3/16	1/4	5/16	7.834	96
44T81-P	1/8	3/16	1/4	5/16	3.590	44	97T81-P	1/8	3/16	1/4	5/16	7.915	97
45T81-P	1/8	3/16	1/4	5/16	3.672	45	98T81-P	1/8	3/16	1/4	5/16	7.997	98
48T81-P	1/8	3/16	1/4	5/16	3.917	48	100T81-P	1/8	3/16	1/4	5/16	8.160	100
50T81-P	1/8	3/16	1/4	5/16	4.080	50	102T81-P	1/8	3/16	1/4	5/16	8.323	102
51T81-P	1/8	3/16	1/4	5/16	4.162	51	105T81-P	1/8	3/16	1/4	5/16	8.568	105
52T81-P	1/8	3/16	1/4	5/16	4.243	52	109T81-P	1/8	3/16	1/4	5/16	8.894	109
53T81-P	1/8	3/16	1/4	5/16	4.325	53	110T81-P	1/8	3/16	1/4	5/16	8.976	110
55T81-P	1/8	3/16	1/4	5/16	4.488	55	114T81-P	1/8	3/16	1/4	5/16	9.302	114
56T81-P	1/8	3/16	1/4	5/16	4.570	56	115T81-P	1/8	3/16	1/4	5/16	9.384	115
57T81-P	1/8	3/16	1/4	5/16	4.651	57	116T81-P	1/8	3/16	1/4	5/16	9.466	116
58T81-P	1/8	3/16	1/4	5/16	4.733	58	118T81-P	1/8	3/16	1/4	5/16	9.629	118
60T81-P	1/8	3/16	1/4	5/16	4.896	60	119T81-P	1/8	3/16	1/4	5/16	9.710	119
61T81-P	1/8	3/16	1/4	5/16	4.978	61	120T81-P	1/8	3/16	1/4	5/16	9.792	120
64T81-P	1/8	3/16	1/4	5/16	5.222	64	122T81-P	1/8	3/16	1/4	5/16	9.955	122
65T81-P	1/8	3/16	1/4	5/16	5.304	65	123T81-P	1/8	3/16	1/4	5/16	10.037	123
69T81-P	1/8	3/16	1/4	5/16	5.630	69	125T81-P	1/8	3/16	1/4	5/16	10.200	125
70T81-P	1/8	3/16	1/4	5/16	5.712	70	130T81-P	1/8	3/16	1/4	5/16	10.608	130
71T81-P	1/8	3/16	1/4	5/16	5.794	71	131T81-P	1/8	3/16	1/4	5/16	10.690	131
72T81-P	1/8	3/16	1/4	5/16	5.875	72	132T81-P	1/8	3/16	1/4	5/16	10.771	132
73T81-P	1/8	3/16	1/4	5/16	5.957	73	134T81-P	1/8	3/16	1/4	5/16	10.934	134
74T81-P	1/8	3/16	1/4	5/16	6.038	74	135T81-P	1/8	3/16	1/4	5/16	11.016	135
75T81-P	1/8	3/16	1/4	5/16	6.120	75	139T81-P	1/8	3/16	1/4	5/16	11.342	139
76T81-P	1/8	3/16	1/4	5/16	6.202	76	140T81-P	1/8	3/16	1/4	5/16	11.424	140
77T81-P	1/8	3/16	1/4	5/16	6.283	77	143T81-P	1/8	3/16	1/4	5/16	11.669	143
80T81-P	1/8	3/16	1/4	5/16	6.528	80	144T81-P	1/8	3/16	1/4	5/16	11.750	144
81T81-P	1/8	3/16	1/4	5/16	6.610	81	145T81-P	1/8	3/16	1/4	5/16	11.832	145
84T81-P	1/8	3/16	1/4	5/16	6.854	84	147T81-P	1/8	3/16	1/4	5/16	11.995	147
85T81-P	1/8	3/16	1/4	5/16	6.936	85	149T81-P	1/8	3/16	1/4	5/16	12.158	149
89T81-P	1/8	3/16	1/4	5/16	7.262	89	150T81-P	1/8	3/16	1/4	5/16	12.240	150
90T81-P	1/8	3/16	1/4	5/16	7.344	90	151T81-P	1/8	3/16	1/4	5/16	12.322	151

URETHANE, Polyester Cord (RoHS compliant)



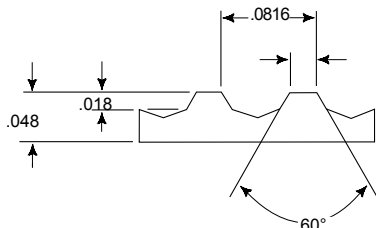
BELT NUMBER	WIDTHS				PITCH LENGTH	NO. OF TEETH	BELT NUMBER	WIDTHS				PITCH LENGTH	NO. OF TEETH
	1/8"	3/16"	1/4"	5/16"				1/8"	3/16"	1/4"	5/16"		
152T81-P	1/8	3/16	1/4	5/16	12.403	152	255T81-P	1/8	3/16	1/4	5/16	20.808	255
153T81-P	1/8	3/16	1/4	5/16	12.485	153	256T81-P	1/8	3/16	1/4	5/16	20.890	256
154T81-P	1/8	3/16	1/4	5/16	12.566	154	257T81-P	1/8	3/16	1/4	5/16	20.971	257
155T81-P	1/8	3/16	1/4	5/16	12.648	155	258T81-P	1/8	3/16	1/4	5/16	21.053	258
159T81-P	1/8	3/16	1/4	5/16	12.974	159	260T81-P	1/8	3/16	1/4	5/16	21.216	260
160T81-P	1/8	3/16	1/4	5/16	13.056	160	264T81-P	1/8	3/16	1/4	5/16	21.542	264
162T81-P	1/8	3/16	1/4	5/16	13.219	162	265T81-P	1/8	3/16	1/4	5/16	21.624	265
163T81-P	1/8	3/16	1/4	5/16	13.301	163	270T81-P	1/8	3/16	1/4	5/16	22.032	270
165T81-P	1/8	3/16	1/4	5/16	13.464	165	275T81-P	1/8	3/16	1/4	5/16	22.440	275
170T81-P	1/8	3/16	1/4	5/16	13.872	170	280T81-P	1/8	3/16	1/4	5/16	22.848	280
175T81-P	1/8	3/16	1/4	5/16	14.280	175	281T81-P	1/8	3/16	1/4	5/16	22.930	281
178T81-P	1/8	3/16	1/4	5/16	14.525	178	285T81-P	1/8	3/16	1/4	5/16	23.256	285
180T81-P	1/8	3/16	1/4	5/16	14.688	180	290T81-P	1/8	3/16	1/4	5/16	23.664	290
185T81-P	1/8	3/16	1/4	5/16	15.096	185	295T81-P	1/8	3/16	1/4	5/16	24.072	295
190T81-P	1/8	3/16	1/4	5/16	15.504	190	300T81-P	1/8	3/16	1/4	5/16	24.480	300
192T81-P	1/8	3/16	1/4	5/16	15.667	192	310T81-P	1/8	3/16	1/4	5/16	25.296	310
193T81-P	1/8	3/16	1/4	5/16	15.749	193	320T81-P	1/8	3/16	1/4	5/16	26.112	320
195T81-P	1/8	3/16	1/4	5/16	15.912	195	324T81-P	1/8	3/16	1/4	5/16	26.438	324
200T81-P	1/8	3/16	1/4	5/16	16.320	200	330T81-P	1/8	3/16	1/4	5/16	26.928	330
205T81-P	1/8	3/16	1/4	5/16	16.728	205	340T81-P	1/8	3/16	1/4	5/16	27.744	340
208T81-P	1/8	3/16	1/4	5/16	16.973	208	350T81-P	1/8	3/16	1/4	5/16	28.560	350
210T81-P	1/8	3/16	1/4	5/16	17.136	210	360T81-P	1/8	3/16	1/4	5/16	29.376	360
214T81-P	1/8	3/16	1/4	5/16	17.462	214	369T81-P	1/8	3/16	1/4	5/16	30.110	369
215T81-P	1/8	3/16	1/4	5/16	17.544	215	370T81-P	1/8	3/16	1/4	5/16	30.192	370
220T81-P	1/8	3/16	1/4	5/16	17.952	220	380T81-P	1/8	3/16	1/4	5/16	31.008	380
222T81-P	1/8	3/16	1/4	5/16	18.115	222	390T81-P	1/8	3/16	1/4	5/16	31.824	390
225T81-P	1/8	3/16	1/4	5/16	18.360	225	392T81-P	1/8	3/16	1/4	5/16	31.987	392
230T81-P	1/8	3/16	1/4	5/16	18.768	230	400T81-P	1/8	3/16	1/4	5/16	32.640	400
235T81-P	1/8	3/16	1/4	5/16	19.176	235	408T81-P	1/8	3/16	1/4	5/16	33.293	408
240T81-P	1/8	3/16	1/4	5/16	19.584	240	423T81-P	1/8	3/16	1/4	5/16	34.517	423
245T81-P	1/8	3/16	1/4	5/16	19.992	245	436T81-P	1/8	3/16	1/4	5/16	35.578	436
250T81-P	1/8	3/16	1/4	5/16	20.400	250	472T81-P	1/8	3/16	1/4	5/16	38.515	472
252T81-P	1/8	3/16	1/4	5/16	20.563	252	535T81-P	1/8	3/16	1/4	5/16	43.656	535

If you don't see the belt you need – call York!

York also manufactures custom pulleys and complete assemblies
 email: support@york-ind.com web: www.york-ind.com



URETHANE, Kevlar Cord (RoHS compliant)

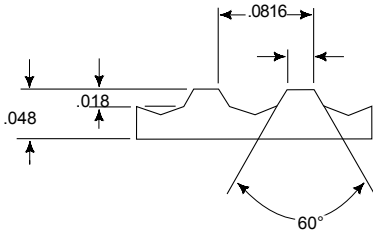


BELT NUMBER	WIDTHS				PITCH LENGTH	NO. OF TEETH	BELT NUMBER	WIDTHS				PITCH LENGTH	NO. OF TEETH
	1/8"	3/16"	1/4"	5/16"				1/8"	3/16"	1/4"	5/16"		
25T81-K	1/8	3/16	1/4	5/16	2.040	25	89T81-K	1/8	3/16	1/4	5/16	7.262	89
30T81-K	1/8	3/16	1/4	5/16	2.448	30	90T81-K	1/8	3/16	1/4	5/16	7.344	90
33T81-K	1/8	3/16	1/4	5/16	2.693	33	91T81-K	1/8	3/16	1/4	5/16	7.426	91
40T81-K	1/8	3/16	1/4	5/16	3.264	40	94T81-K	1/8	3/16	1/4	5/16	7.670	94
44T81-K	1/8	3/16	1/4	5/16	3.590	44	95T81-K	1/8	3/16	1/4	5/16	7.752	95
45T81-K	1/8	3/16	1/4	5/16	3.672	45	96T81-K	1/8	3/16	1/4	5/16	7.834	96
48T81-K	1/8	3/16	1/4	5/16	3.917	48	97T81-K	1/8	3/16	1/4	5/16	7.915	97
50T81-K	1/8	3/16	1/4	5/16	4.080	50	98T81-K	1/8	3/16	1/4	5/16	7.997	98
51T81-K	1/8	3/16	1/4	5/16	4.162	51	100T81-K	1/8	3/16	1/4	5/16	8.160	100
52T81-K	1/8	3/16	1/4	5/16	4.243	52	102T81-K	1/8	3/16	1/4	5/16	8.323	102
53T81-K	1/8	3/16	1/4	5/16	4.325	53	105T81-K	1/8	3/16	1/4	5/16	8.568	105
55T81-K	1/8	3/16	1/4	5/16	4.488	55	109T81-K	1/8	3/16	1/4	5/16	8.894	109
56T81-K	1/8	3/16	1/4	5/16	4.570	56	110T81-K	1/8	3/16	1/4	5/16	8.976	110
57T81-K	1/8	3/16	1/4	5/16	4.651	57	114T81-K	1/8	3/16	1/4	5/16	9.302	114
58T81-K	1/8	3/16	1/4	5/16	4.733	58	115T81-K	1/8	3/16	1/4	5/16	9.384	115
60T81-K	1/8	3/16	1/4	5/16	4.896	60	116T81-K	1/8	3/16	1/4	5/16	9.466	116
61T81-K	1/8	3/16	1/4	5/16	4.978	61	118T81-K	1/8	3/16	1/4	5/16	9.629	118
64T81-K	1/8	3/16	1/4	5/16	5.222	64	119T81-K	1/8	3/16	1/4	5/16	9.710	119
65T81-K	1/8	3/16	1/4	5/16	5.304	65	120T81-K	1/8	3/16	1/4	5/16	9.792	120
69T81-K	1/8	3/16	1/4	5/16	5.630	69	122T81-K	1/8	3/16	1/4	5/16	9.955	122
70T81-K	1/8	3/16	1/4	5/16	5.712	70	123T81-K	1/8	3/16	1/4	5/16	10.037	123
71T81-K	1/8	3/16	1/4	5/16	5.794	71	125T81-K	1/8	3/16	1/4	5/16	10.200	125
72T81-K	1/8	3/16	1/4	5/16	5.875	72	130T81-K	1/8	3/16	1/4	5/16	10.608	130
73T81-K	1/8	3/16	1/4	5/16	5.957	73	131T81-K	1/8	3/16	1/4	5/16	10.690	131
74T81-K	1/8	3/16	1/4	5/16	6.038	74	132T81-K	1/8	3/16	1/4	5/16	10.771	132
75T81-K	1/8	3/16	1/4	5/16	6.120	75	134T81-K	1/8	3/16	1/4	5/16	10.934	134
76T81-K	1/8	3/16	1/4	5/16	6.202	76	135T81-K	1/8	3/16	1/4	5/16	11.016	135
77T81-K	1/8	3/16	1/4	5/16	6.283	77	139T81-K	1/8	3/16	1/4	5/16	11.342	139
80T81-K	1/8	3/16	1/4	5/16	6.528	80	140T81-K	1/8	3/16	1/4	5/16	11.424	140
81T81-K	1/8	3/16	1/4	5/16	6.610	81	143T81-K	1/8	3/16	1/4	5/16	11.669	143
84T81-K	1/8	3/16	1/4	5/16	6.854	84	144T81-K	1/8	3/16	1/4	5/16	11.750	144
85T81-K	1/8	3/16	1/4	5/16	6.936	85	145T81-K	1/8	3/16	1/4	5/16	11.832	145

If you don't see the belt you need – call York!

URETHANE, Kevlar Cord (RoHS compliant)

If you don't see the belt you need – call York!



BELT NUMBER	WIDTHS				PITCH LENGTH	NO. OF TEETH	BELT NUMBER	WIDTHS				PITCH LENGTH	NO. OF TEETH
	1/8"	3/16"	1/4"	5/16"				1/8"	3/16"	1/4"	5/16"		
147T81-K	1/8	3/16	1/4	5/16	11.995	147	252T81-K	1/8	3/16	1/4	5/16	20.563	252
149T81-K	1/8	3/16	1/4	5/16	12.158	149	255T81-K	1/8	3/16	1/4	5/16	20.808	255
150T81-K	1/8	3/16	1/4	5/16	12.240	150	256T81-K	1/8	3/16	1/4	5/16	20.890	256
151T81-K	1/8	3/16	1/4	5/16	12.322	151	257T81-K	1/8	3/16	1/4	5/16	20.971	257
152T81-K	1/8	3/16	1/4	5/16	12.403	152	258T81-K	1/8	3/16	1/4	5/16	21.053	258
153T81-K	1/8	3/16	1/4	5/16	12.485	153	260T81-K	1/8	3/16	1/4	5/16	21.216	260
154T81-K	1/8	3/16	1/4	5/16	12.566	154	264T81-K	1/8	3/16	1/4	5/16	21.542	264
155T81-K	1/8	3/16	1/4	5/16	12.648	155	265T81-K	1/8	3/16	1/4	5/16	21.624	265
159T81-K	1/8	3/16	1/4	5/16	12.974	159	270T81-K	1/8	3/16	1/4	5/16	22.032	270
160T81-K	1/8	3/16	1/4	5/16	13.056	160	275T81-K	1/8	3/16	1/4	5/16	22.440	275
162T81-K	1/8	3/16	1/4	5/16	13.219	162	280T81-K	1/8	3/16	1/4	5/16	22.848	280
163T81-K	1/8	3/16	1/4	5/16	13.301	163	285T81-K	1/8	3/16	1/4	5/16	23.256	285
165T81-K	1/8	3/16	1/4	5/16	13.464	165	290T81-K	1/8	3/16	1/4	5/16	23.664	290
170T81-K	1/8	3/16	1/4	5/16	13.872	170	295T81-K	1/8	3/16	1/4	5/16	24.072	295
175T81-K	1/8	3/16	1/4	5/16	14.280	175	300T81-K	1/8	3/16	1/4	5/16	24.480	300
178T81-K	1/8	3/16	1/4	5/16	14.525	178	310T81-K	1/8	3/16	1/4	5/16	25.296	310
180T81-K	1/8	3/16	1/4	5/16	14.688	180	320T81-K	1/8	3/16	1/4	5/16	26.112	320
185T81-K	1/8	3/16	1/4	5/16	15.096	185	324T81-K	1/8	3/16	1/4	5/16	26.438	324
190T81-K	1/8	3/16	1/4	5/16	15.504	190	330T81-K	1/8	3/16	1/4	5/16	26.928	330
195T81-K	1/8	3/16	1/4	5/16	15.912	195	340T81-K	1/8	3/16	1/4	5/16	27.744	340
200T81-K	1/8	3/16	1/4	5/16	16.320	200	350T81-K	1/8	3/16	1/4	5/16	28.560	350
205T81-K	1/8	3/16	1/4	5/16	16.728	205	360T81-K	1/8	3/16	1/4	5/16	29.376	360
208T81-K	1/8	3/16	1/4	5/16	16.973	208	369T81-K	1/8	3/16	1/4	5/16	30.110	369
210T81-K	1/8	3/16	1/4	5/16	17.136	210	370T81-K	1/8	3/16	1/4	5/16	30.192	370
214T81-K	1/8	3/16	1/4	5/16	17.462	214	380T81-K	1/8	3/16	1/4	5/16	31.008	380
215T81-K	1/8	3/16	1/4	5/16	17.544	215	390T81-K	1/8	3/16	1/4	5/16	31.824	390
220T81-K	1/8	3/16	1/4	5/16	17.952	220	392T81-K	1/8	3/16	1/4	5/16	31.987	392
222T81-K	1/8	3/16	1/4	5/16	18.115	222	400T81-K	1/8	3/16	1/4	5/16	32.640	400
225T81-K	1/8	3/16	1/4	5/16	18.360	225	408T81-K	1/8	3/16	1/4	5/16	33.293	408
230T81-K	1/8	3/16	1/4	5/16	18.768	230	423T81-K	1/8	3/16	1/4	5/16	34.517	423
235T81-K	1/8	3/16	1/4	5/16	19.176	235	436T81-K	1/8	3/16	1/4	5/16	35.578	436
240T81-K	1/8	3/16	1/4	5/16	19.584	240	472T81-K	1/8	3/16	1/4	5/16	38.515	472
245T81-K	1/8	3/16	1/4	5/16	19.992	245	535T81-K	1/8	3/16	1/4	5/16	43.656	535
250T81-K	1/8	3/16	1/4	5/16	20.400	250							

York also manufactures custom pulleys and complete assemblies
 email: support@york-ind.com web: www.york-ind.com

