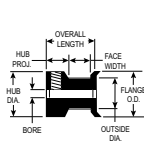
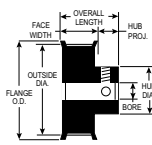


ALUMINUM WITH CLEAR ANODIZE (RoHS compliant)

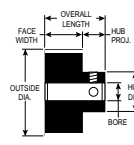
FOR BELTS UP TO 6MM WIDE



TYPE 6FC



TYPE 6F



TYPE 6

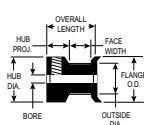


PART NUMBER	NO. OF GROOVES	PITCH DIA.	OUTSIDE DIA.	FLANGE O.D.	TYPE	BORE (+.001) (-.000)	FACE WIDTH	OVERALL LENGTH	HUB PROJ.	HUB DIA.	SET SCREWS
12-2GT06-6A X 1/8	12	.301	.281	.480	6FC	1250	.285	9/16	15/64	.480	4-40(1)
SAV-12-2GT06-6A X 1/8	12	.301	.281	.480	6FC	1250	.285	9/16	15/64	.480	4-40(1)
14-2GT06-6A X 1/8	14	.351	.331	.530	6FC	1250	.285	9/16	15/64	.530	4-40(1)
SAV-14-2GT06-6A X 1/8	14	.351	.331	.530	6FC	1250	.285	9/16	15/64	.530	4-40(1)
15-2GT06-6A X 3/16	15	.376	.356	.555	6FC	1875	.285	9/16	15/64	.555	6-40(1)
SAV-15-2GT06-6A X 3/16	15	.376	.356	.555	6FC	1875	.285	9/16	15/64	.555	6-40(1)
16-2GT06-6A X 3/16	16	.401	.381	.580	6FC	1875	.285	9/16	15/64	.580	6-40(1)
SAV-16-2GT06-6A X 3/16	16	.401	.381	.580	6FC	1875	.285	9/16	15/64	.580	6-40(1)
18-2GT06-6A X 1/4	18	.451	.431	.635	6FC	2500	.285	9/16	15/64	.635	6-40(2)
SAV-18-2GT06-6A X 1/4	18	.451	.431	.635	6FC	2500	.285	9/16	15/64	.635	6-40(2)
20-2GT06-6A X 1/4	20	.501	.481	.685	6FC	2500	.285	9/16	15/64	.685	6-40(2)
SAV-20-2GT06-6A X 1/4	20	.501	.481	.685	6FC	2500	.285	9/16	15/64	.685	6-40(2)
21-2GT06-6A X 1/4	21	.526	.506	.710	6FC	2500	.285	9/16	15/64	.710	6-40(2)
SAV-21-2GT06-6A X 1/4	21	.526	.506	.710	6FC	2500	.285	9/16	15/64	.710	6-40(2)
22-2GT06-6A X 1/4	22	.551	.531	.740	6FC	2500	.285	9/16	15/64	.740	6-40(2)
SAV-22-2GT06-6A X 1/4	22	.551	.531	.740	6FC	2500	.285	9/16	15/64	.740	6-40(2)
18-2GT06-1A X 3/16	18	.451	.431	.635	6F	1875	.389	5/8	15/64	.312	6-40(2)
SAV-18-2GT06-1A X 3/16	18	.451	.431	.635	6F	1875	.389	5/8	15/64	.312	6-40(2)
20-2GT06-1A X 3/16	20	.501	.481	.685	6F	1875	.389	5/8	15/64	.364	6-40(2)
SAV-20-2GT06-1A X 3/16	20	.501	.481	.685	6F	1875	.389	5/8	15/64	.364	6-40(2)
21-2GT06-1A X 3/16	21	.526	.506	.710	6F	1875	.389	5/8	15/64	.390	6-40(2)
SAV-21-2GT06-1A X 3/16	21	.526	.506	.710	6F	1875	.389	5/8	15/64	.390	6-40(2)
22-2GT06-1A X 3/16	22	.551	.531	.740	6F	1875	.389	5/8	15/64	.390	6-40(2)
SAV-22-2GT06-1A X 3/16	22	.551	.531	.740	6F	1875	.389	5/8	15/64	.390	6-40(2)
24-2GT06-1A X 1/4	24	.602	.582	.790	6F	2500	.389	11/16	19/64	.442	6-40(2)
SAV-24-2GT06-1A X 1/4	24	.602	.582	.790	6F	2500	.389	11/16	19/64	.442	6-40(2)
28-2GT06-1A X 1/4	28	.702	.682	.895	6F	2500	.389	11/16	19/64	.494	6-40(2)
SAV-28-2GT06-1A X 1/4	28	.702	.682	.895	6F	2500	.389	11/16	19/64	.494	6-40(2)
30-2GT06-1A X 1/4	30	.752	.732	.945	6F	2500	.389	11/16	19/64	.546	8-32(2)
SAV-30-2GT06-1A X 1/4	30	.752	.732	.945	6F	2500	.389	11/16	19/64	.546	8-32(2)
32-2GT06-1A X 1/4	32	.802	.782	1.000	6F	2500	.389	11/16	19/64	.598	8-32(2)
SAV-32-2GT06-1A X 1/4	32	.802	.782	1.000	6F	2500	.389	11/16	19/64	.598	8-32(2)
36-2GT06-1A X 1/4	36	.902	.882	1.105	6F	2500	.389	11/16	19/64	.676	8-32(2)
SAV-36-2GT06-1A X 1/4	36	.902	.882	1.105	6F	2500	.389	11/16	19/64	.676	8-32(2)
40-2GT06-1A X 1/4	40	1.003	.983	1.210	6F	2500	.405	23/32	5/16	.754	8-32(2)
SAV-40-2GT06-1A X 1/4	40	1.003	.983	1.210	6F	2500	.405	23/32	5/16	.754	8-32(2)

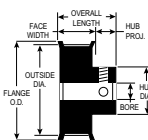
“SAV-” in front of any standard timing pulley part # represents the Shaft-Saver version. Shaft-Saver pulleys have special setscrews that grip without damage to the shaft and allow easy pulley removal and realignment. For additional information, see our Shaft-Saver Engineering Section.

ALUMINUM WITH CLEAR ANODIZE (RoHS compliant)

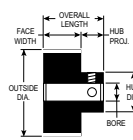
FOR BELTS UP TO 6MM WIDE



TYPE 6FC



TYPE 6F



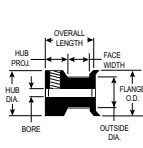
TYPE 6

PART NUMBER	NO. OF GROOVES	PITCH DIA.	OUTSIDE DIA.	FLANGE O.D.	BORE TYPE	BORE (+.001)	FACE WIDTH	OVERALL LENGTH	HUB PROJ.	HUB DIA.	SET SCREWS
42-2GT06-1A X 1/4	42	1.053	1.033	1.260	6F	.2500	.405	23/32	5/16	.806	8-32(2)
SAV-42-2GT06-1A X 1/4	42	1.053	1.033	1.260	6F	.2500	.405	23/32	5/16	.806	8-32(2)
44-2GT06-1A X 1/4	44	1.103	1.083	1.315	6F	.2500	.405	23/32	5/16	.858	8-32(2)
SAV-44-2GT06-1A X 1/4	44	1.103	1.083	1.315	6F	.2500	.405	23/32	5/16	.858	8-32(2)
48-2GT06-1A X 1/4	48	1.203	1.183	1.420	6F	.2500	.405	23/32	5/16	.936	8-32(2)
SAV-48-2GT06-1A X 1/4	48	1.203	1.183	1.420	6F	.2500	.405	23/32	5/16	.936	8-32(2)
60-2GT06-1A X 1/4	60	1.504	1.484	1.730	6F	.2500	.405	23/32	5/16	1.222	8-32(2)
SAV-60-2GT06-1A X 1/4	60	1.504	1.484	1.730	6F	.2500	.405	23/32	5/16	1.222	8-32(2)
60-2GT06-2A X 1/4	60	1.504	1.484	—	6	.2500	.375	3/4	3/8	1.148	8-32(2)
SAV-60-2GT06-2A X 1/4	60	1.504	1.484	—	6	.2500	.375	3/4	3/8	1.148	8-32(2)
72-2GT06-2A X 1/4	72	1.805	1.785	—	6	.2500	.375	3/4	3/8	1.195	8-32(2)
SAV-72-2GT06-2A X 1/4	72	1.805	1.785	—	6	.2500	.375	3/4	3/8	1.195	8-32(2)
80-2GT06-2A X 5/16	80	2.005	1.985	—	6	.3125	.375	3/4	3/8	1.500	8-32(2)
SAV-80-2GT06-2A X 5/16	80	2.005	1.985	—	6	.3125	.375	3/4	3/8	1.500	8-32(2)
90-2GT06-2A X 5/16	90	2.256	2.236	—	6	.3125	.375	3/4	3/8	1.500	8-32(2)
SAV-90-2GT06-2A X 5/16	90	2.256	2.236	—	6	.3125	.375	3/4	3/8	1.500	8-32(2)
100-2GT06-2A X 5/16	100	2.506	2.486	—	6	.3125	.375	3/4	3/8	1.500	8-32(2)
SAV-100-2GT06-2A X 5/16	100	2.506	2.486	—	6	.3125	.375	3/4	3/8	1.500	8-32(2)
120-2GT06-2A X 3/8	120	3.008	2.988	—	6	.3750	.375	3/4	3/8	1.500	10-32(2)
SAV-120-2GT06-2A X 3/8	120	3.008	2.988	—	6	.3750	.375	3/4	3/8	1.500	10-32(2)

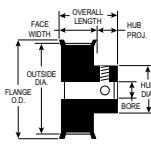
“SAV-” in front of any standard timing pulley part # represents the Shaft-Saver version. Shaft-Saver pulleys have special setscrews that grip without damage to the shaft and allow easy pulley removal and realignment. For additional information, see our Shaft-Saver Engineering Section.

ALUMINUM WITH CLEAR ANODIZE (RoHS compliant)

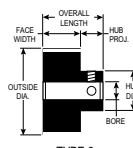
FOR BELTS UP TO 9MM WIDE



TYPE 6FC



TYPE 6F



TYPE 6



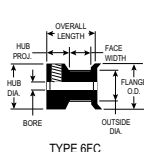
PART NUMBER	NO. OF GROOVES	PITCH DIA.	OUTSIDE DIA.	FLANGE O.D.	TYPE	BORE (+.001) (-.000)	FACE WIDTH	OVERALL LENGTH	HUB PROJ.	HUB DIA.	SET SCREWS
12-2GT09-6A X 1/8	12	.301	.281	.480	6FC	1250	.410	11/16	15/64	.480	4-40(1)
SAV-12-2GT09-6A X 1/8	12	.301	.281	.480	6FC	1250	.410	11/16	15/64	.480	4-40(1)
14-2GT09-6A X 1/8	14	.351	.331	.530	6FC	1250	.410	11/16	15/64	.530	4-40(1)
SAV-14-2GT09-6A X 1/8	14	.351	.331	.530	6FC	1250	.410	11/16	15/64	.530	4-40(1)
15-2GT09-6A X 3/16	15	.376	.356	.555	6FC	1875	.410	11/16	15/64	.555	6-40(1)
SAV-15-2GT09-6A X 3/16	15	.376	.356	.555	6FC	1875	.410	11/16	15/64	.555	6-40(1)
16-2GT09-6A X 3/16	16	.401	.381	.580	6FC	1875	.410	11/16	15/64	.580	6-40(1)
SAV-16-2GT09-6A X 3/16	16	.401	.381	.580	6FC	1875	.410	11/16	15/64	.580	6-40(1)
18-2GT09-6A X 1/4	18	.451	.431	.635	6FC	2500	.410	11/16	15/64	.635	6-40(2)
SAV-18-2GT09-6A X 1/4	18	.451	.431	.635	6FC	2500	.410	11/16	15/64	.635	6-40(2)
20-2GT09-6A X 1/4	20	.501	.481	.685	6FC	2500	.410	11/16	15/64	.685	6-40(2)
SAV-20-2GT09-6A X 1/4	20	.501	.481	.685	6FC	2500	.410	11/16	15/64	.685	6-40(2)
21-2GT09-6A X 1/4	21	.526	.506	.710	6FC	2500	.410	11/16	15/64	.710	6-40(2)
SAV-21-2GT09-6A X 1/4	21	.526	.506	.710	6FC	2500	.410	11/16	15/64	.710	6-40(2)
22-2GT09-6A X 1/4	22	.551	.531	.740	6FC	2500	.410	11/16	15/64	.740	6-40(2)
SAV-22-2GT09-6A X 1/4	22	.551	.531	.740	6FC	2500	.410	11/16	15/64	.740	6-40(2)
18-2GT09-1A X 3/16	18	.451	.431	.635	6F	1875	.514	3/4	15/64	.312	6-40(2)
SAV-18-2GT09-1A X 3/16	18	.451	.431	.635	6F	1875	.514	3/4	15/64	.312	6-40(2)
20-2GT09-1A X 3/16	20	.501	.481	.685	6F	1875	.514	3/4	15/64	.364	6-40(2)
SAV-20-2GT09-1A X 3/16	20	.501	.481	.685	6F	1875	.514	3/4	15/64	.364	6-40(2)
21-2GT09-1A X 3/16	21	.526	.506	.710	6F	1875	.514	3/4	15/64	.390	6-40(2)
SAV-21-2GT09-1A X 3/16	21	.526	.506	.710	6F	1875	.514	3/4	15/64	.390	6-40(2)
22-2GT09-1A X 3/16	22	.551	.531	.740	6F	1875	.514	3/4	15/64	.390	6-40(2)
SAV-22-2GT09-1A X 3/16	22	.551	.531	.740	6F	1875	.514	3/4	15/64	.390	6-40(2)
24-2GT09-1A X 1/4	24	.602	.582	.790	6F	2500	.514	13/16	19/64	.442	6-40(2)
SAV-24-2GT09-1A X 1/4	24	.602	.582	.790	6F	2500	.514	13/16	19/64	.442	6-40(2)
28-2GT09-1A X 1/4	28	.702	.682	.895	6F	2500	.514	13/16	19/64	.494	6-40(2)
SAV-28-2GT09-1A X 1/4	28	.702	.682	.895	6F	2500	.514	13/16	19/64	.494	6-40(2)
30-2GT09-1A X 1/4	30	.752	.732	.945	6F	2500	.514	13/16	19/64	.546	8-32(2)
SAV-30-2GT09-1A X 1/4	30	.752	.732	.945	6F	2500	.514	13/16	19/64	.546	8-32(2)
32-2GT09-1A X 1/4	32	.802	.782	1.000	6F	2500	.514	13/16	19/64	.598	8-32(2)
SAV-32-2GT09-1A X 1/4	32	.802	.782	1.000	6F	2500	.514	13/16	19/64	.598	8-32(2)
36-2GT09-1A X 1/4	36	.902	.882	1.105	6F	2500	.514	13/16	19/64	.676	8-32(2)
SAV-36-2GT09-1A X 1/4	36	.902	.882	1.105	6F	2500	.514	13/16	19/64	.676	8-32(2)
40-2GT09-1A X 1/4	40	1.003	.983	1.210	6F	2500	.530	27/32	5/16	.754	8-32(2)
SAV-40-2GT09-1A X 1/4	40	1.003	.983	1.210	6F	2500	.530	27/32	5/16	.754	8-32(2)

“SAV-” in front of any standard timing pulley part # represents the Shaft-Saver version. Shaft-Saver pulleys have special setscrews that grip without damage to the shaft and allow easy pulley removal and realignment. For additional information, see our Shaft-Saver Engineering Section.

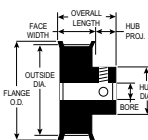


ALUMINUM WITH CLEAR ANODIZE (RoHS compliant)

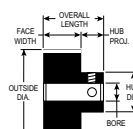
FOR BELTS UP TO 9MM WIDE



TYPE 6FC



TYPE 6F

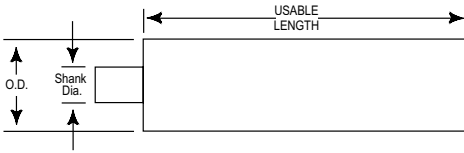


TYPE 6

PART NUMBER	NO. OF GROOVES	PITCH DIA.	OUTSIDE DIA.	FLANGE O.D.	BORE TYPE	BORE (+.001)	FACE WIDTH	OVERALL LENGTH	HUB PROJ.	HUB DIA.	SET SCREWS
42-2GT09-1A X 1/4	42	1.053	1.033	1.260	6F	.2500	.530	27/32	5/16	.806	8-32(2)
SAV-42-2GT09-1A X 1/4	42	1.053	1.033	1.260	6F	.2500	.530	27/32	5/16	.806	8-32(2)
44-2GT09-1A X 1/4	44	1.103	1.083	1.315	6F	.2500	.530	27/32	5/16	.858	8-32(2)
SAV-44-2GT09-1A X 1/4	44	1.103	1.083	1.315	6F	.2500	.530	27/32	5/16	.858	8-32(2)
48-2GT09-1A X 1/4	48	1.203	1.183	1.420	6F	.2500	.530	27/32	5/16	.936	8-32(2)
SAV-48-2GT09-1A X 1/4	48	1.203	1.183	1.420	6F	.2500	.530	27/32	5/16	.936	8-32(2)
60-2GT09-1A X 1/4	60	1.504	1.484	1.730	6F	.2500	.530	27/32	5/16	1.222	8-32(2)
SAV-60-2GT09-1A X 1/4	60	1.504	1.484	1.730	6F	.2500	.530	27/32	5/16	1.222	8-32(2)
60-2GT09-2A X 1/4	60	1.504	1.484	—	6	.2500	.500	7/8	3/8	1.148	8-32(2)
SAV-60-2GT09-2A X 1/4	60	1.504	1.484	—	6	.2500	.500	7/8	3/8	1.148	8-32(2)
72-2GT09-2A X 1/4	72	1.805	1.785	—	6	.2500	.500	7/8	3/8	1.195	8-32(2)
SAV-72-2GT09-2A X 1/4	72	1.805	1.785	—	6	.2500	.500	7/8	3/8	1.195	8-32(2)
80-2GT09-2A X 5/16	80	2.005	1.985	—	6	.3125	.500	7/8	3/8	1.500	8-32(2)
SAV-80-2GT09-2A X 5/16	80	2.005	1.985	—	6	.3125	.500	7/8	3/8	1.500	8-32(2)
90-2GT09-2A X 5/16	90	2.256	2.236	—	6	.3125	.500	7/8	3/8	1.500	8-32(2)
SAV-90-2GT09-2A X 5/16	90	2.256	2.236	—	6	.3125	.500	7/8	3/8	1.500	8-32(2)
100-2GT09-2A X 5/16	100	2.506	2.486	—	6	.3125	.500	7/8	3/8	1.500	8-32(2)
SAV-100-2GT09-2A X 5/16	100	2.506	2.486	—	6	.3125	.500	7/8	3/8	1.500	8-32(2)
120-2GT09-2A X 3/8	120	3.008	2.988	—	6	.3750	.500	7/8	3/8	1.500	10-32(2)
SAV-120-2GT09-2A X 3/8	120	3.008	2.988	—	6	.3750	.500	7/8	3/8	1.500	10-32(2)

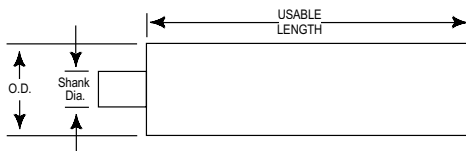
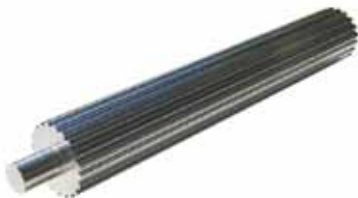
“SAV-” in front of any standard timing pulley part # represents the Shaft-Saver version. Shaft-Saver pulleys have special setscrews that grip without damage to the shaft and allow easy pulley removal and realignment. For additional information, see our Shaft-Saver Engineering Section.

ALUMINUM 6061-T6 (RoHS compliant)



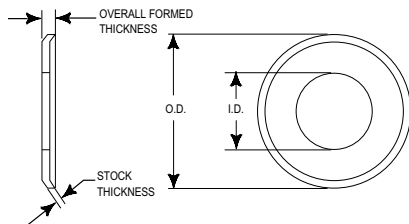
PART NUMBER	NO. OF GROOVES	PITCH DIA.	OUTSIDE DIA.	SHANK DIA.	USEABLE LENGTH
12-2GT-P-2A	12	.301	.281	5/16	2"
13-2GT-P-2A	13	.326	.306	3/8	2"
14-2GT-P-3A	14	.351	.331	3/8	3"
15-2GT-P-3A	15	.376	.356	7/16	3"
16-2GT-P-3A	16	.401	.381	7/16	3"
17-2GT-P-3A	17	.426	.406	7/16	3"
18-2GT-P-3A	18	.451	.431	1/2	3"
19-2GT-P-3A	19	.476	.456	1/2	3"
20-2GT-P-4A	20	.501	.481	3/8	4"
21-2GT-P-4A	21	.526	.506	3/8	4"
22-2GT-P-4A	22	.551	.531	3/8	4"
23-2GT-P-4A	23	.576	.556	3/8	4"
24-2GT-P-5A	24	.602	.582	1/2	5"
26-2GT-P-5A	26	.652	.632	1/2	5"
28-2GT-P-5A	28	.702	.682	1/2	5"
30-2GT-P-6A	30	.752	.732	1/2	6"
32-2GT-P-6A	32	.802	.782	1/2	6"
34-2GT-P-6A	34	.852	.832	1/2	6"
36-2GT-P-6A	36	.902	.882	1/2	6"
38-2GT-P-6A	38	.952	.932	1/2	6"

ALUMINUM 6061-T6 (RoHS compliant)



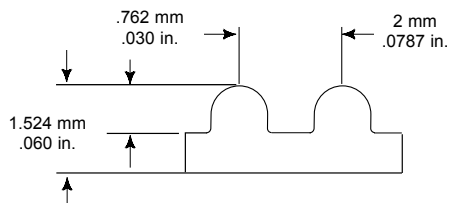
PART NUMBER	NO. OF GROOVES	PITCH DIA.	OUTSIDE DIA.	SHANK DIA.	USEABLE LENGTH
40-2GT-P-7A	40	1.003	.983	1/2	7"
42-2GT-P-7A	42	1.053	1.033	1/2	7"
43-2GT-P-7A	43	1.078	1.058	1/2	7"
44-2GT-P-7A	44	1.103	1.083	1/2	7"
45-2GT-P-7A	45	1.128	1.108	1/2	7"
46-2GT-P-7A	46	1.153	1.133	1/2	7"
48-2GT-P-7A	48	1.203	1.183	1/2	7"
49-2GT-P-7A	49	1.228	1.208	1/2	7"
52-2GT-P-7A	52	1.303	1.283	1/2	7"
55-2GT-P-7A	55	1.379	1.359	1/2	7"
56-2GT-P-7A	56	1.404	1.384	1/2	7"
60-2GT-P-8A	60	1.504	1.484	1/2	8"
65-2GT-P-8A	65	1.629	1.609	1/2	8"
70-2GT-P-8A	70	1.754	1.734	1/2	8"
72-2GT-P-8A	72	1.805	1.785	1/2	8"
75-2GT-P-8A	75	1.880	1.860	1/2	8"
80-2GT-P-8A	80	2.005	1.985	3/4	8"
90-2GT-P-8A	90	2.256	2.236	3/4	8"
96-2GT-P-8A	96	2.406	2.386	3/4	8"
100-2GT-P-8A	100	2.506	2.486	3/4	8"
110-2GT-P-8A	110	2.757	2.737	3/4	8"
120-2GT-P-8A	120	3.008	2.988	3/4	8"

ALUMINUM (RoHS compliant)



PART NUMBER	INSIDE DIA.	OUTSIDE DIA.	STOCK THICKNESS	OVERALL FORMED THICKNESS
10-2GT-F9A	.155	.425	.025	.045
11-2GT-F9A	.181	.450	.025	.045
12-2GT-F9A	.205	.480	.025	.045
13-2GT-F9A	.230	.505	.025	.045
14-2GT-F9A	.255	.530	.025	.045
15-2GT-F9A	.280	.555	.025	.045
16-2GT-F9A	.305	.580	.025	.045
18-2GT-F9A	.355	.635	.032	.052
20-2GT-F9A	.405	.685	.032	.052
21-2GT-F9A	.430	.710	.032	.052
22-2GT-F9A	.452	.740	.032	.052
24-2GT-F9A	.504	.790	.032	.052
25-2GT-F9A	.530	.815	.032	.052
26-2GT-F9A	.556	.840	.032	.052
28-2GT-F9A	.574	.895	.032	.052
30-2GT-F9A	.626	.945	.032	.052
32-2GT-F9A	.678	1.000	.032	.052
33-2GT-F9A	.704	1.025	.032	.052
34-2GT-F9A	.722	1.050	.032	.052
35-2GT-F9A	.748	1.080	.032	.052
36-2GT-F9A	.774	1.105	.032	.052
38-2GT-F9A	.826	1.155	.032	.052
40-2GT-F9A	.874	1.210	.040	.060
42-2GT-F9A	.926	1.260	.040	.060
44-2GT-F9A	.978	1.315	.040	.060
45-2GT-F9A	1.004	1.340	.040	.060
48-2GT-F9A	1.058	1.420	.040	.060
50-2GT-F9A	1.110	1.470	.040	.060
54-2GT-F9A	1.200	1.575	.040	.060
60-2GT-F9A	1.356	1.730	.040	.060

BLACK NEOPRENE, Fiberglass Cord (RoHS compliant)



BELT NUMBER	WIDTHS				PITCH LENGTH (MM)	NO. OF TEETH
	4MM	6MM	9MM	12MM		
74-2GT	04	06	09	12	74	37
76-2GT	04	06	09	12	76	38
100-2GT	04	06	09	12	100	50
112-2GT	04	06	09	12	112	56
126-2GT	04	06	09	12	126	63
132-2GT	04	06	09	12	132	66
134-2GT	04	06	09	12	134	67
136-2GT	04	06	09	12	136	68
140-2GT	04	06	09	12	140	70
142-2GT	04	06	09	12	142	71
152-2GT	04	06	09	12	152	76
158-2GT	04	06	09	12	158	79
160-2GT	04	06	09	12	160	80
164-2GT	04	06	09	12	164	82
166-2GT	04	06	09	12	166	83
172-2GT	04	06	09	12	172	86
180-2GT	04	06	09	12	180	90
186-2GT	04	06	09	12	186	93
192-2GT	04	06	09	12	192	96
200-2GT	04	06	09	12	200	100
202-2GT	04	06	09	12	202	101
208-2GT	04	06	09	12	208	104
210-2GT	04	06	09	12	210	105
212-2GT	04	06	09	12	212	106
216-2GT	04	06	09	12	216	108
220-2GT	04	06	09	12	220	110
224-2GT	04	06	09	12	224	112
232-2GT	04	06	09	12	232	116
236-2GT	04	06	09	12	236	118
240-2GT	04	06	09	12	240	120

If you don't see the belt you need – call York!

**YORK**

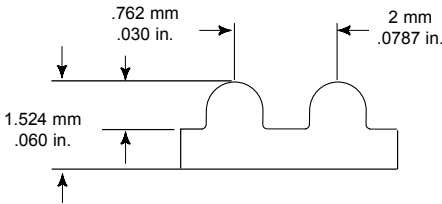
ISO 9001: 2008 Registered

303 Nassau Blvd., Garden City Park, NY 11040

Tel: 1-800 354 8466 Fax: 1-800 354 8485



BLACK NEOPRENE, Fiberglass Cord (RoHS compliant)



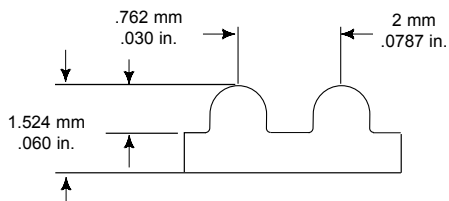
BELT NUMBER	WIDTHS				PITCH LENGTH (MM)	NO. OF TEETH
	4MM	6MM	9MM	12MM		
242-2GT	04	06	09	12	242	121
250-2GT	04	06	09	12	250	125
252-2GT	04	06	09	12	252	126
258-2GT	04	06	09	12	258	129
264-2GT	04	06	09	12	264	132
278-2GT	04	06	09	12	278	139
280-2GT	04	06	09	12	280	140
286-2GT	04	06	09	12	286	143
288-2GT	04	06	09	12	288	144
300-2GT	04	06	09	12	300	150
318-2GT	04	06	09	12	318	159
320-2GT	04	06	09	12	320	160
322-2GT	04	06	09	12	322	161
332-2GT	04	06	09	12	332	166
346-2GT	04	06	09	12	346	173
350-2GT	04	06	09	12	350	175
356-2GT	04	06	09	12	356	178
364-2GT	04	06	09	12	364	182
370-2GT	04	06	09	12	370	185
380-2GT	04	06	09	12	380	190
386-2GT	04	06	09	12	386	193
392-2GT	04	06	09	12	392	196
400-2GT	04	06	09	12	400	200
406-2GT	04	06	09	12	406	203
420-2GT	04	06	09	12	420	210
428-2GT	04	06	09	12	428	214
430-2GT	04	06	09	12	430	215
456-2GT	04	06	09	12	456	228

**Need a clean, low dust belt? See TruMotion belts.**

York also manufactures custom pulleys and complete assemblies  
 email: [support@york-ind.com](mailto:support@york-ind.com) web: [www.york-ind.com](http://www.york-ind.com)



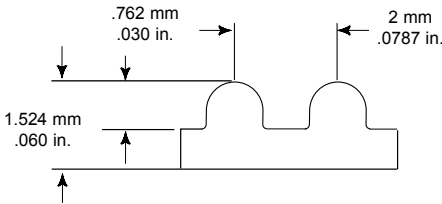
BLACK NEOPRENE, Fiberglass Cord (RoHS compliant)



BELT NUMBER	WIDTHS				PITCH LENGTH (MM)	NO. OF TEETH
	4MM	6MM	9MM	12MM		
470-2GT	04	06	09	12	470	235
474-2GT	04	06	09	12	474	237
488-2GT	04	06	09	12	488	244
502-2GT	04	06	09	12	502	251
504-2GT	04	06	09	12	504	252
528-2GT	04	06	09	12	528	264
544-2GT	04	06	09	12	544	272
552-2GT	04	06	09	12	552	276
576-2GT	04	06	09	12	576	288
600-2GT	04	06	09	12	600	300
640-2GT	04	06	09	12	640	320
660-2GT	04	06	09	12	660	330
696-2GT	04	06	09	12	696	348
744-2GT	04	06	09	12	744	372
1164-2GT	04	06	09	12	1164	582
1700-2GT	04	06	09	12	1700	850

If you don't see the belt you need – call York!

Cream Colored Engineered Polymer with Fiberglass Cord (RoHS compliant)



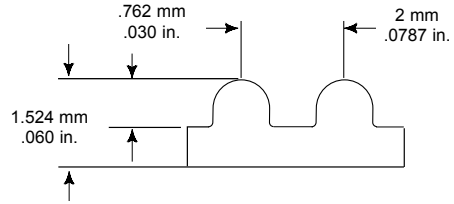
BELT NUMBER	WIDTHS				PITCH LENGTH (MM)	NO. OF TEETH
	4MM	6MM	9MM	12MM		
TM-74-2GT	04	06	09	12	74	37
TM-76-2GT	04	06	09	12	76	38
TM-100-2GT	04	06	09	12	100	50
TM-112-2GT	04	06	09	12	112	56
TM-126-2GT	04	06	09	12	126	63
TM-132-2GT	04	06	09	12	132	66
TM-134-2GT	04	06	09	12	134	67
TM-136-2GT	04	06	09	12	136	68
TM-140-2GT	04	06	09	12	140	70
TM-142-2GT	04	06	09	12	142	71
TM-152-2GT	04	06	09	12	152	76
TM-158-2GT	04	06	09	12	158	79
TM-160-2GT	04	06	09	12	160	80
TM-164-2GT	04	06	09	12	164	82
TM-166-2GT	04	06	09	12	166	83
TM-172-2GT	04	06	09	12	172	86
TM-180-2GT	04	06	09	12	180	90
TM-186-2GT	04	06	09	12	186	93
TM-192-2GT	04	06	09	12	192	96
TM-200-2GT	04	06	09	12	200	100
TM-202-2GT	04	06	09	12	202	101
TM-208-2GT	04	06	09	12	208	104
TM-210-2GT	04	06	09	12	210	105
TM-212-2GT	04	06	09	12	212	106
TM-216-2GT	04	06	09	12	216	108
TM-220-2GT	04	06	09	12	220	110
TM-224-2GT	04	06	09	12	224	112
TM-232-2GT	04	06	09	12	232	116
TM-236-2GT	04	06	09	12	236	118
TM-240-2GT	04	06	09	12	240	120

**If you don't see the belt you need – call York!**

York also manufactures custom pulleys and complete assemblies  
 email: [support@york-ind.com](mailto:support@york-ind.com) web: [www.york-ind.com](http://www.york-ind.com)



Cream Colored Engineered Polymer with Fiberglass Cord (RoHS compliant)



BELT NUMBER	WIDTHS				PITCH LENGTH (MM)	NO. OF TEETH
	4MM	6MM	9MM	12MM		
TM-242-2GT	04	06	09	12	242	121
TM-250-2GT	04	06	09	12	250	125
TM-252-2GT	04	06	09	12	252	126
TM-258-2GT	04	06	09	12	258	129
TM-264-2GT	04	06	09	12	264	132
TM-278-2GT	04	06	09	12	278	139
TM-280-2GT	04	06	09	12	280	140
TM-286-2GT	04	06	09	12	286	143
TM-288-2GT	04	06	09	12	288	144
TM-300-2GT	04	06	09	12	300	150
TM-318-2GT	04	06	09	12	318	159
TM-320-2GT	04	06	09	12	320	160
TM-322-2GT	04	06	09	12	322	161
TM-332-2GT	04	06	09	12	332	166
TM-346-2GT	04	06	09	12	346	173
TM-350-2GT	04	06	09	12	350	175
TM-356-2GT	04	06	09	12	356	178
TM-364-2GT	04	06	09	12	364	182
TM-370-2GT	04	06	09	12	370	185
TM-380-2GT	04	06	09	12	380	190
TM-386-2GT	04	06	09	12	386	193
TM-392-2GT	04	06	09	12	392	196
TM-400-2GT	04	06	09	12	400	200
TM-406-2GT	04	06	09	12	406	203
TM-420-2GT	04	06	09	12	420	210
TM-428-2GT	04	06	09	12	428	214
TM-430-2GT	04	06	09	12	430	215
TM-456-2GT	04	06	09	12	456	228

If you don't see the belt you need – call York!

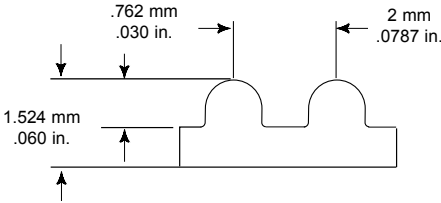
**YORK**

ISO 9001: 2008 Registered

303 Nassau Blvd., Garden City Park, NY 11040

Tel: 1-800 354 8466 Fax: 1-800 354 8485

Cream Colored Engineered Polymer with Fiberglass Cord (RoHS compliant)



BELT NUMBER	WIDTHS				PITCH LENGTH (MM)	NO. OF TEETH
	4MM	6MM	9MM	12MM		
TM-470-2GT	04	06	09	12	470	235
TM-474-2GT	04	06	09	12	474	237
TM-488-2GT	04	06	09	12	488	244
TM-502-2GT	04	06	09	12	502	251
TM-504-2GT	04	06	09	12	504	252
TM-528-2GT	04	06	09	12	528	264
TM-544-2GT	04	06	09	12	544	272
TM-552-2GT	04	06	09	12	552	276
TM-576-2GT	04	06	09	12	576	288
TM-600-2GT	04	06	09	12	600	300
TM-640-2GT	04	06	09	12	640	320
TM-660-2GT	04	06	09	12	660	330
TM-696-2GT	04	06	09	12	696	348
TM-744-2GT	04	06	09	12	744	372
TM-1164-2GT	04	06	09	12	1164	582
TM-1700-2GT	04	06	09	12	1700	850

**If you don't see the belt you need – call York!**

York also manufactures custom pulleys and complete assemblies  
 email: [support@york-ind.com](mailto:support@york-ind.com) web: [www.york-ind.com](http://www.york-ind.com)

