

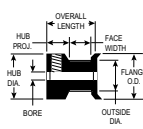
PART NUMBER	NO. OF GROOVES	PITCH DIA.	OUTSIDE DIA.	FLANGE O.D.	TYPE	BORE (+.001) (-.000)	FACE WIDTH	OVERALL LENGTH	HUB DIA.	SET SCREWS (2@90°)
16-3GT09-6A X 1/8	16	.602	.572	.710	6FC	1.250	.401	.691	.710	6-40
SAV-16-3GT09-6A X 1/8	16	.602	.572	.710	6FC	1.250	.401	.691	.710	6-40
17-3GT09-6A X 1/8	17	.639	.609	.740	6FC	1.250	.401	.691	.740	6-40
SAV-17-3GT09-6A X 1/8	17	.639	.609	.740	6FC	1.250	.401	.691	.740	6-40
18-3GT09-1A X 3/16	18	.677	.647	.790	6F	1.875	.506	.821	.442	4-40
SAV-18-3GT09-1A X 3/16	18	.677	.647	.790	6F	1.875	.506	.821	.442	4-40
19-3GT09-1A X 3/16	19	.714	.684	.827	6F	1.875	.506	.821	.479	4-40
SAV-19-3GT09-1A X 3/16	19	.714	.684	.827	6F	1.875	.506	.821	.479	4-40
20-3GT09-1A X 3/16	20	.752	.722	.895	6F	1.875	.506	.821	.500	4-40
SAV-20-3GT09-1A X 3/16	20	.752	.722	.895	6F	1.875	.506	.821	.500	4-40
21-3GT09-1A X 3/16	21	.790	.760	.895	6F	1.875	.506	.821	.500	4-40
SAV-21-3GT09-1A X 3/16	21	.790	.760	.895	6F	1.875	.506	.821	.500	4-40
22-3GT09-1A X 3/16	22	.827	.797	.945	6F	1.875	.506	.821	.562	4-40
SAV-22-3GT09-1A X 3/16	22	.827	.797	.945	6F	1.875	.506	.821	.562	4-40
24-3GT09-1A X 1/4	24	.902	.872	1.025	6F	2.500	.506	.821	.625	6-40
SAV-24-3GT09-1A X 1/4	24	.902	.872	1.025	6F	2.500	.506	.821	.625	6-40
25-3GT09-1A X 1/4	25	.940	.910	1.060	6F	2.500	.506	.821	.625	6-40
SAV-25-3GT09-1A X 1/4	25	.940	.910	1.060	6F	2.500	.506	.821	.625	6-40
26-3GT09-1A X 1/4	26	.977	.947	1.105	6F	2.500	.506	.821	.625	6-40
SAV-26-3GT09-1A X 1/4	26	.977	.947	1.105	6F	2.500	.506	.821	.625	6-40
28-3GT09-1A X 1/4	28	1.053	1.023	1.173	6F	2.500	.506	.821	.701	6-40
SAV-28-3GT09-1A X 1/4	28	1.053	1.023	1.173	6F	2.500	.506	.821	.701	6-40
30-3GT09-1A X 1/4	30	1.128	1.098	1.250	6F	2.500	.506	.821	.776	8-32
SAV-30-3GT09-1A X 1/4	30	1.128	1.098	1.250	6F	2.500	.506	.821	.776	8-32
32-3GT09-1A X 1/4	32	1.203	1.173	1.323	6F	2.500	.506	.821	.851	8-32
SAV-32-3GT09-1A X 1/4	32	1.203	1.173	1.323	6F	2.500	.506	.821	.851	8-32
34-3GT09-1A X 1/4	34	1.278	1.248	1.398	6F	2.500	.527	.833	.921	8-32
SAV-34-3GT09-1A X 1/4	34	1.278	1.248	1.398	6F	2.500	.527	.833	.921	8-32
36-3GT09-1A X 1/4	36	1.353	1.323	1.478	6F	2.500	.527	.833	1.000	8-32
SAV-36-3GT09-1A X 1/4	36	1.353	1.323	1.478	6F	2.500	.527	.833	1.000	8-32
38-3GT09-1A X 1/4	38	1.429	1.399	1.549	6F	2.500	.527	.833	1.075	8-32
SAV-38-3GT09-1A X 1/4	38	1.429	1.399	1.549	6F	2.500	.527	.833	1.075	8-32
40-3GT09-1A X 1/4	40	1.504	1.474	1.625	6F	2.500	.527	.833	1.150	8-32
SAV-40-3GT09-1A X 1/4	40	1.504	1.474	1.625	6F	2.500	.527	.833	1.150	8-32
42-3GT09-1A X 1/4	42	1.579	1.549	1.730	6F	2.500	.527	.833	1.150	8-32
SAV-42-3GT09-1A X 1/4	42	1.579	1.549	1.730	6F	2.500	.527	.833	1.150	8-32

“SAV-” in front of any standard timing pulley part # represents the Shaft-Saver version. Shaft-Saver pulleys have special setscrews that grip without damage to the shaft and allow easy pulley removal and realignment. For additional information, see our Shaft-Saver Engineering Section.

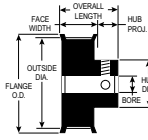


ALUMINUM WITH CLEAR ANODIZE (RoHS compliant)

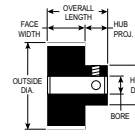
FOR BELTS UP TO 9MM WIDE



TYPE 6FC



TYPE 6F



TYPE 6

PART NUMBER	NO. OF GROOVES	PITCH DIA.	OUTSIDE DIA.	FLANGE O.D.	BORE TYPE	BORE (+.001 / -.000)	FACE WIDTH	OVERALL LENGTH	HUB DIA.	SET SCREWS (2@90°)
44-3GT09-1A X 1/4	44	1.654	1.624	1.775	6F	.2500	.527	.833	1.250	8-32
SAV-44-3GT09-1A X 1/4	44	1.654	1.624	1.775	6F	.2500	.527	.833	1.250	8-32
45-3GT09-1A X 1/4	45	1.692	1.662	1.775	6F	.2500	.527	.833	1.250	8-32
SAV-45-3GT09-1A X 1/4	45	1.692	1.662	1.775	6F	.2500	.527	.833	1.250	8-32
48-3GT09-2A X 5/16	48	1.805	1.775	—	6	.3125	.500	.875	1.250	8-32
SAV-48-3GT09-2A X 5/16	48	1.805	1.775	—	6	.3125	.500	.875	1.250	8-32
50-3GT09-2A X 5/16	50	1.880	1.850	—	6	.3125	.500	.875	1.250	8-32
SAV-50-3GT09-2A X 5/16	50	1.880	1.850	—	6	.3125	.500	.875	1.250	8-32
56-3GT09-2A X 5/16	56	2.105	2.075	—	6	.3125	.500	.875	1.250	8-32
SAV-56-3GT09-2A X 5/16	56	2.105	2.075	—	6	.3125	.500	.875	1.250	8-32
60-3GT09-2A X 5/16	60	2.256	2.226	—	6	.3125	.500	.875	1.250	8-32
SAV-60-3GT09-2A X 5/16	60	2.256	2.226	—	6	.3125	.500	.875	1.250	8-32
62-3GT09-2A X 5/16	62	2.331	2.301	—	6	.3125	.500	.875	1.250	8-32
SAV-62-3GT09-2A X 5/16	62	2.331	2.301	—	6	.3125	.500	.875	1.250	8-32
68-3GT09-2A X 5/16	68	2.557	2.527	—	6	.3125	.500	.875	1.250	8-32
SAV-68-3GT09-2A X 5/16	68	2.557	2.527	—	6	.3125	.500	.875	1.250	8-32
72-3GT09-2A X 5/16	72	2.707	2.677	—	6	.3125	.500	.875	1.250	8-32
SAV-72-3GT09-2A X 5/16	72	2.707	2.677	—	6	.3125	.500	.875	1.250	8-32
74-3GT09-2A X 5/16	74	2.782	2.752	—	6	.3125	.500	.875	1.250	8-32
SAV-74-3GT09-2A X 5/16	74	2.782	2.752	—	6	.3125	.500	.875	1.250	8-32
80-3GT09-2A X 5/16	80	3.008	2.978	—	6	.3125	.500	.875	1.250	8-32
SAV-80-3GT09-2A X 5/16	80	3.008	2.978	—	6	.3125	.500	.875	1.250	8-32

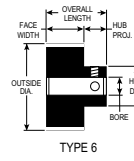
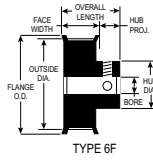
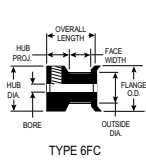
“SAV-” in front of any standard timing pulley part # represents the Shaft-Saver version. Shaft-Saver pulleys have special setscrews that grip without damage to the shaft and allow easy pulley removal and realignment. For additional information, see our Shaft-Saver Engineering Section.

TIMING BELT PULLEYS

3MM GT2 PITCH

ALUMINUM WITH CLEAR ANODIZE (RoHS compliant)

FOR BELTS UP TO 15MM WIDE



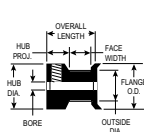
PART NUMBER	NO. OF GROOVES	PITCH DIA.	OUTSIDE DIA.	FLANGE O.D.	TYPE	BORE (+.001) (-.000)	FACE WIDTH	OVERALL LENGTH	HUB DIA.	SET SCREWS (2@90°)
16-3GT15-6A X 1/8	16	.602	.572	.710	6FC	1.250	.637	.927	.710	6-40
SAV-16-3GT15-6A X 1/8	16	.602	.572	.710	6FC	1.250	.637	.927	.710	6-40
17-3GT15-6A X 1/8	17	.639	.609	.740	6FC	1.250	.637	.927	.740	6-40
SAV-17-3GT15-6A X 1/8	17	.639	.609	.740	6FC	1.250	.637	.927	.740	6-40
18-3GT15-1A X 3/16	18	.677	.647	.790	6F	1.875	.742	1.057	.442	4-40
SAV-18-3GT15-1A X 3/16	18	.677	.647	.790	6F	1.875	.742	1.057	.442	4-40
19-3GT15-1A X 3/16	19	.714	.684	.827	6F	1.875	.742	1.057	.479	4-40
SAV-19-3GT15-1A X 3/16	19	.714	.684	.827	6F	1.875	.742	1.057	.479	4-40
20-3GT15-1A X 3/16	20	.752	.722	.895	6F	1.875	.742	1.057	.500	4-40
SAV-20-3GT15-1A X 3/16	20	.752	.722	.895	6F	1.875	.742	1.057	.500	4-40
21-3GT15-1A X 3/16	21	.790	.760	.895	6F	1.875	.742	1.057	.500	4-40
SAV-21-3GT15-1A X 3/16	21	.790	.760	.895	6F	1.875	.742	1.057	.500	4-40
22-3GT15-1A X 3/16	22	.827	.797	.945	6F	1.875	.742	1.057	.562	4-40
SAV-22-3GT15-1A X 3/16	22	.827	.797	.945	6F	1.875	.742	1.057	.562	4-40
24-3GT15-1A X 1/4	24	.902	.872	1.025	6F	2.500	.742	1.057	.625	6-40
SAV-24-3GT15-1A X 1/4	24	.902	.872	1.025	6F	2.500	.742	1.057	.625	6-40
25-3GT15-1A X 1/4	25	.940	.910	1.060	6F	2.500	.742	1.057	.625	6-40
SAV-25-3GT15-1A X 1/4	25	.940	.910	1.060	6F	2.500	.742	1.057	.625	6-40
26-3GT15-1A X 1/4	26	.977	.947	1.105	6F	2.500	.742	1.057	.625	6-40
SAV-26-3GT15-1A X 1/4	26	.977	.947	1.105	6F	2.500	.742	1.057	.625	6-40
28-3GT15-1A X 1/4	28	1.053	1.023	1.173	6F	2.500	.742	1.057	.701	6-40
SAV-28-3GT15-1A X 1/4	28	1.053	1.023	1.173	6F	2.500	.742	1.057	.701	6-40
30-3GT15-1A X 1/4	30	1.128	1.098	1.250	6F	2.500	.742	1.057	.776	8-32
SAV-30-3GT15-1A X 1/4	30	1.128	1.098	1.250	6F	2.500	.742	1.057	.776	8-32
32-3GT15-1A X 1/4	32	1.203	1.173	1.323	6F	2.500	.742	1.057	.851	8-32
SAV-32-3GT15-1A X 1/4	32	1.203	1.173	1.323	6F	2.500	.742	1.057	.851	8-32
34-3GT15-1A X 1/4	34	1.278	1.248	1.398	6F	2.500	.763	1.069	.921	8-32
SAV-34-3GT15-1A X 1/4	34	1.278	1.248	1.398	6F	2.500	.763	1.069	.921	8-32
36-3GT15-1A X 1/4	36	1.353	1.323	1.478	6F	2.500	.763	1.069	1.000	8-32
SAV-36-3GT15-1A X 1/4	36	1.353	1.323	1.478	6F	2.500	.763	1.069	1.000	8-32
38-3GT15-1A X 1/4	38	1.429	1.399	1.549	6F	2.500	.763	1.069	1.075	8-32
SAV-38-3GT15-1A X 1/4	38	1.429	1.399	1.549	6F	2.500	.763	1.069	1.075	8-32
40-3GT15-1A X 1/4	40	1.504	1.474	1.625	6F	2.500	.763	1.069	1.150	8-32
SAV-40-3GT15-1A X 1/4	40	1.504	1.474	1.625	6F	2.500	.763	1.069	1.150	8-32
42-3GT15-1A X 1/4	42	1.579	1.549	1.730	6F	2.500	.763	1.069	1.150	8-32
SAV-42-3GT15-1A X 1/4	42	1.579	1.549	1.730	6F	2.500	.763	1.069	1.150	8-32

“SAV-” in front of any standard timing pulley part # represents the Shaft-Saver version. Shaft-Saver pulleys have special setscrews that grip without damage to the shaft and allow easy pulley removal and realignment. For additional information, see our Shaft-Saver Engineering Section.

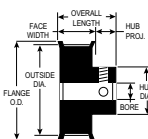


ALUMINUM WITH CLEAR ANODIZE (RoHS compliant)

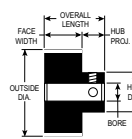
FOR BELTS UP TO 15MM WIDE



TYPE 6FC



TYPE 6F

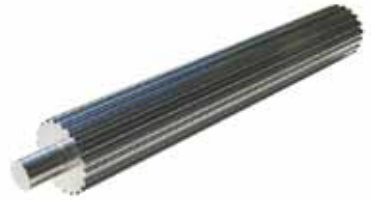
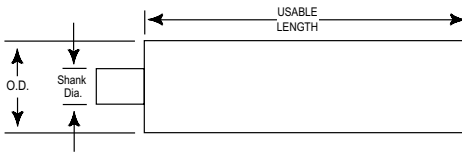


TYPE 6

PART NUMBER	NO. OF GROOVES	PITCH DIA.	OUTSIDE DIA.	FLANGE O.D.	BORE TYPE	BORE (+.001 / -.000)	FACE WIDTH	OVERALL LENGTH	HUB DIA.	SET SCREWS (2@90°)
44-3GT15-1A X 1/4	44	1.654	1.624	1.775	6F	.2500	.763	1.069	1.250	8-32
SAV-44-3GT15-1A X 1/4	44	1.654	1.624	1.775	6F	.2500	.763	1.069	1.250	8-32
45-3GT15-1A X 1/4	45	1.692	1.662	1.775	6F	.2500	.763	1.069	1.250	8-32
SAV-45-3GT15-1A X 1/4	45	1.692	1.662	1.775	6F	.2500	.763	1.069	1.250	8-32
48-3GT15-2A X 5/16	48	1.805	1.775	—	6	.3125	.736	1.111	1.250	8-32
SAV-48-3GT15-2A X 5/16	48	1.805	1.775	—	6	.3125	.736	1.111	1.250	8-32
50-3GT15-2A X 5/16	50	1.880	1.850	—	6	.3125	.736	1.111	1.250	8-32
SAV-50-3GT15-2A X 5/16	50	1.880	1.850	—	6	.3125	.736	1.111	1.250	8-32
56-3GT15-2A X 5/16	56	2.105	2.075	—	6	.3125	.736	1.111	1.250	8-32
SAV-56-3GT15-2A X 5/16	56	2.105	2.075	—	6	.3125	.736	1.111	1.250	8-32
60-3GT15-2A X 5/16	60	2.256	2.226	—	6	.3125	.736	1.111	1.250	8-32
SAV-60-3GT15-2A X 5/16	60	2.256	2.226	—	6	.3125	.736	1.111	1.250	8-32
62-3GT15-2A X 5/16	62	2.331	2.301	—	6	.3125	.736	1.111	1.250	8-32
SAV-62-3GT15-2A X 5/16	62	2.331	2.301	—	6	.3125	.736	1.111	1.250	8-32
68-3GT15-2A X 5/16	68	2.557	2.527	—	6	.3125	.736	1.111	1.250	8-32
SAV-68-3GT15-2A X 5/16	68	2.557	2.527	—	6	.3125	.736	1.111	1.250	8-32
72-3GT15-2A X 5/16	72	2.707	2.677	—	6	.3125	.736	1.111	1.250	8-32
SAV-72-3GT15-2A X 5/16	72	2.707	2.677	—	6	.3125	.736	1.111	1.250	8-32
74-3GT15-2A X 5/16	74	2.782	2.752	—	6	.3125	.736	1.111	1.250	8-32
SAV-74-3GT15-2A X 5/16	74	2.782	2.752	—	6	.3125	.736	1.111	1.250	8-32
80-3GT15-2A X 5/16	80	3.008	2.978	—	6	.3125	.736	1.111	1.250	8-32
SAV-80-3GT15-2A X 5/16	80	3.008	2.978	—	6	.3125	.736	1.111	1.250	8-32

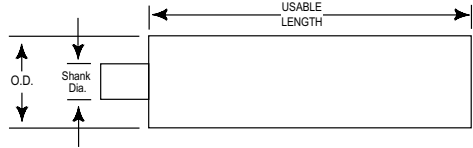
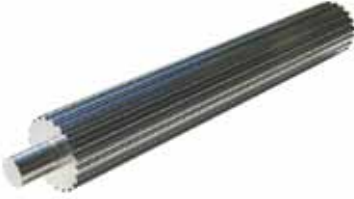
“SAV-” in front of any standard timing pulley part # represents the Shaft-Saver version. Shaft-Saver pulleys have special setscrews that grip without damage to the shaft and allow easy pulley removal and realignment. For additional information, see our Shaft-Saver Engineering Section.

ALUMINUM 6061-T6 (RoHS compliant)



PART NUMBER	NO. OF GROOVES	PITCH DIA.	OUTSIDE DIA.	SHANK DIA.	USEABLE LENGTH
16-3GT-P-5A	16	.602	.572	1/2	5"
17-3GT-P-5A	17	.639	.609	1/2	5"
18-3GT-P-5A	18	.677	.647	1/2	5"
19-3GT-P-5A	19	.714	.684	1/2	5"
20-3GT-P-6A	20	.752	.722	1/2	6"
21-3GT-P-6A	21	.790	.760	1/2	6"
22-3GT-P-6A	22	.827	.797	1/2	6"
23-3GT-P-6A	23	.865	.835	1/2	6"
24-3GT-P-6A	24	.902	.872	1/2	6"
25-3GT-P-6A	25	.940	.910	1/2	6"
26-3GT-P-6A	26	.977	.947	1/2	6"
27-3GT-P-6A	27	1.015	.985	1/2	6"
28-3GT-P-6A	28	1.053	1.023	1/2	6"
30-3GT-P-7A	30	1.128	1.098	1/2	7"
31-3GT-P-7A	31	1.165	1.135	1/2	7"
32-3GT-P-7A	32	1.203	1.173	1/2	7"
33-3GT-P-7A	33	1.241	1.211	1/2	7"
34-3GT-P-7A	34	1.278	1.248	1/2	7"
35-3GT-P-7A	35	1.316	1.286	1/2	7"
36-3GT-P-8A	36	1.353	1.323	1/2	8"
38-3GT-P-8A	38	1.429	1.399	1/2	8"
40-3GT-P-8A	40	1.504	1.474	1/2	8"
41-3GT-P-8A	41	1.541	1.511	1/2	8"
42-3GT-P-8A	42	1.579	1.549	1/2	8"
43-3GT-P-8A	43	1.617	1.587	1/2	8"
44-3GT-P-8A	44	1.654	1.624	1/2	8"
45-3GT-P-8A	45	1.692	1.662	1/2	8"
46-3GT-P-8A	46	1.729	1.699	1/2	8"

ALUMINUM 6061-T6 (RoHS compliant)

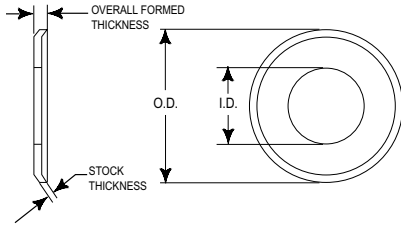


PART NUMBER	NO. OF GROOVES	PITCH DIA.	OUTSIDE DIA.	SHANK DIA.	USEABLE LENGTH
48-3GT-P-8A	48	1.805	1.775	1/2	8"
49-3GT-P-8A	49	1.842	1.812	1/2	8"
50-3GT-P-8A	50	1.880	1.850	3/4	8"
52-3GT-P-8A	52	1.955	1.925	3/4	8"
54-3GT-P-8A	54	2.030	2.000	3/4	8"
55-3GT-P-8A	55	2.068	2.038	3/4	8"
56-3GT-P-8A	56	2.105	2.075	3/4	8"
58-3GT-P-8A	58	2.181	2.151	3/4	8"
60-3GT-P-8A	60	2.256	2.226	3/4	8"
62-3GT-P-8A	62	2.331	2.301	3/4	8"
64-3GT-P-8A	64	2.406	2.376	3/4	8"
65-3GT-P-8A	65	2.444	2.414	3/4	8"
66-3GT-P-8A	66	2.481	2.451	3/4	8"
68-3GT-P-8A	68	2.557	2.527	3/4	8"
70-3GT-P-8A	70	2.632	2.602	3/4	8"
72-3GT-P-8A	72	2.707	2.677	3/4	8"
75-3GT-P-8A	75	2.820	2.790	3/4	8"
80-3GT-P-8A	80	3.008	2.978	3/4	8"
82-3GT-P-8A	82	3.083	3.053	3/4	8"
84-3GT-P-8A	84	3.158	3.128	3/4	8"
88-3GT-P-8A	88	3.308	3.278	3/4	8"
90-3GT-P-8A	90	3.384	3.354	3/4	8"
92-3GT-P-8A	92	3.459	3.429	3/4	8"
96-3GT-P-8A	96	3.609	3.579	3/4	8"
100-3GT-P-8A	100	3.760	3.730	1	8"
110-3GT-P-8A	110	4.136	4.106	1	8"
120-3GT-P-8A	120	4.511	4.481	1	8"
130-3GT-P-8A	130	4.887	4.857	1	8"
140-3GT-P-8A	140	5.263	5.233	1	8"
150-3GT-P-8A	150	5.639	5.609	1	8"
160-3GT-P-8A	160	6.015	5.985	1	8"

PULLEY FLANGES

3MM GT2 PITCH

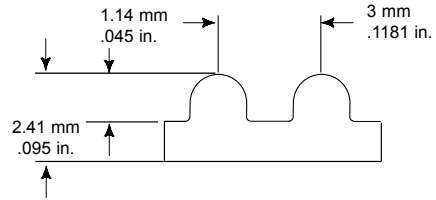
ALUMINUM (RoHS compliant)



PART NUMBER	INSIDE DIA.	OUTSIDE DIA.	STOCK THICKNESS	OVERALL FORMED THICKNESS
16-3GT-F10A	.452	.710	.032	.052
17-3GT-F10A	.452	.740	.032	.052
18-3GT-F10A	.504	.790	.032	.052
19-3GT-F10A	.541	.827	.032	.052
20-3GT-F10A	.574	.895	.032	.052
22-3GT-F10A	.626	.945	.032	.052
24-3GT-F10A	.704	1.025	.032	.052
25-3GT-F10A	.738	1.060	.032	.052
26-3GT-F10A	.774	1.105	.032	.052
28-3GT-F10A	.849	1.173	.032	.052
30-3GT-F10A	.924	1.250	.032	.052
32-3GT-F10A	.999	1.323	.032	.052
34-3GT-F10A	1.074	1.398	.040	.060
36-3GT-F10A	1.149	1.478	.040	.060
38-3GT-F10A	1.225	1.549	.040	.060
40-3GT-F10A	1.300	1.625	.040	.060
42-3GT-F10A	1.356	1.730	.040	.060
44-3GT-F10A	1.450	1.775	.040	.060
45-3GT-F10A	1.450	1.775	.040	.060



BLACK NEOPRENE, Fiberglass Cord (RoHS compliant)



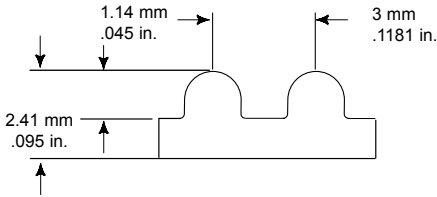
BELT NUMBER	WIDTHS				PITCH LENGTH (MM)	NO. OF TEETH
	6MM	9MM	12MM	15MM		
120-3GT	06	09	12	15	120	40
129-3GT	06	09	12	15	129	43
135-3GT	06	09	12	15	135	45
144-3GT	06	09	12	15	144	48
150-3GT	06	09	12	15	150	50
165-3GT	06	09	12	15	165	55
180-3GT	06	09	12	15	180	60
189-3GT	06	09	12	15	189	63
195-3GT	06	09	12	15	195	65
201-3GT	06	09	12	15	201	67
204-3GT	06	09	12	15	204	68
210-3GT	06	09	12	15	210	70
219-3GT	06	09	12	15	219	73
225-3GT	06	09	12	15	225	75
240-3GT	06	09	12	15	240	80
243-3GT	06	09	12	15	243	81
246-3GT	06	09	12	15	246	82
252-3GT	06	09	12	15	252	84
255-3GT	06	09	12	15	255	85
267-3GT	06	09	12	15	267	89
270-3GT	06	09	12	15	270	90
282-3GT	06	09	12	15	282	94
285-3GT	06	09	12	15	285	95
288-3GT	06	09	12	15	288	96
291-3GT	06	09	12	15	291	97
300-3GT	06	09	12	15	300	100
324-3GT	06	09	12	15	324	108
330-3GT	06	09	12	15	330	110
339-3GT	06	09	12	15	339	113
360-3GT	06	09	12	15	360	120

If you don't see the belt you need – call York!

TIMING BELTS

3MM GT2 PITCH

BLACK NEOPRENE, Fiberglass Cord (RoHS compliant)



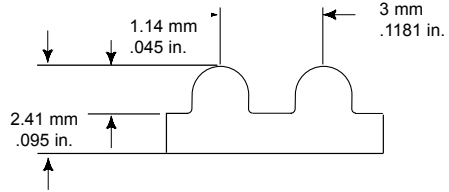
BELT NUMBER	WIDTHS				PITCH LENGTH (MM)	NO. OF TEETH
	6MM	9MM	12MM	15MM		
363-3GT	06	09	12	15	363	121
375-3GT	06	09	12	15	375	125
390-3GT	06	09	12	15	390	130
420-3GT	06	09	12	15	420	140
450-3GT	06	09	12	15	450	150
480-3GT	06	09	12	15	480	160
483-3GT	06	09	12	15	483	161
489-3GT	06	09	12	15	489	163
495-3GT	06	09	12	15	495	165
501-3GT	06	09	12	15	501	167
510-3GT	06	09	12	15	510	170
513-3GT	06	09	12	15	513	171
537-3GT	06	09	12	15	537	179
540-3GT	06	09	12	15	540	180
552-3GT	06	09	12	15	552	184
564-3GT	06	09	12	15	564	188
570-3GT	06	09	12	15	570	190
600-3GT	06	09	12	15	600	200
630-3GT	06	09	12	15	630	210
684-3GT	06	09	12	15	684	228
750-3GT	06	09	12	15	750	250
840-3GT	06	09	12	15	840	280
849-3GT	06	09	12	15	849	283
945-3GT	06	09	12	15	945	315
1050-3GT	06	09	12	15	1050	350
1536-3GT	06	09	12	15	1536	512
1587-3GT	06	09	12	15	1587	529
2061-3GT	06	09	12	15	2061	687

Need a clean, low dust belt? See TruMotion belts.

York also manufactures custom pulleys and complete assemblies
 email: support@york-ind.com web: www.york-ind.com



Cream Colored Engineered Polymer with Fiberglass Cord (RoHS compliant)



BELT NUMBER	WIDTHS				PITCH LENGTH (MM)	NO. OF TEETH
	6MM	9MM	12MM	15MM		
TM-120-3GT	06	09	12	15	120	40
TM-129-3GT	06	09	12	15	129	43
TM-135-3GT	06	09	12	15	135	45
TM-144-3GT	06	09	12	15	144	48
TM-150-3GT	06	09	12	15	150	50
TM-165-3GT	06	09	12	15	165	55
TM-180-3GT	06	09	12	15	180	60
TM-189-3GT	06	09	12	15	189	63
TM-195-3GT	06	09	12	15	195	65
TM-201-3GT	06	09	12	15	201	67
TM-204-3GT	06	09	12	15	204	68
TM-210-3GT	06	09	12	15	210	70
TM-219-3GT	06	09	12	15	219	73
TM-225-3GT	06	09	12	15	225	75
TM-240-3GT	06	09	12	15	240	80
TM-243-3GT	06	09	12	15	243	81
TM-246-3GT	06	09	12	15	246	82
TM-252-3GT	06	09	12	15	252	84
TM-255-3GT	06	09	12	15	255	85
TM-267-3GT	06	09	12	15	267	89
TM-270-3GT	06	09	12	15	270	90
TM-282-3GT	06	09	12	15	282	94
TM-285-3GT	06	09	12	15	285	95
TM-288-3GT	06	09	12	15	288	96
TM-291-3GT	06	09	12	15	291	97
TM-300-3GT	06	09	12	15	300	100
TM-324-3GT	06	09	12	15	324	108
TM-330-3GT	06	09	12	15	330	110
TM-339-3GT	06	09	12	15	339	113
TM-360-3GT	06	09	12	15	360	120

If you don't see the belt you need – call York!

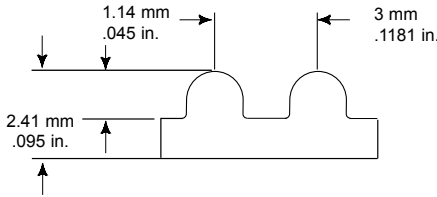
YORK

ISO 9001: 2008 Registered

303 Nassau Blvd., Garden City Park, NY 11040

Tel: 1-800 354 8466 Fax: 1-800 354 8485

Cream Colored Engineered Polymer with Fiberglass Cord (RoHS compliant)



BELT NUMBER	WIDTHS				PITCH LENGTH (MM)	NO. OF TEETH
	6MM	9MM	12MM	15MM		
TM-363-3GT	06	09	12	15	363	121
TM-375-3GT	06	09	12	15	375	125
TM-390-3GT	06	09	12	15	390	130
TM-420-3GT	06	09	12	15	420	140
TM-450-3GT	06	09	12	15	450	150
TM-480-3GT	06	09	12	15	480	160
TM-483-3GT	06	09	12	15	483	161
TM-489-3GT	06	09	12	15	489	163
TM-495-3GT	06	09	12	15	495	165
TM-501-3GT	06	09	12	15	501	167
TM-510-3GT	06	09	12	15	510	170
TM-513-3GT	06	09	12	15	513	171
TM-537-3GT	06	09	12	15	537	179
TM-540-3GT	06	09	12	15	540	180
TM-552-3GT	06	09	12	15	552	184
TM-564-3GT	06	09	12	15	564	188
TM-570-3GT	06	09	12	15	570	190
TM-600-3GT	06	09	12	15	600	200
TM-630-3GT	06	09	12	15	630	210
TM-684-3GT	06	09	12	15	684	228
TM-750-3GT	06	09	12	15	750	250
TM-840-3GT	06	09	12	15	840	280
TM-849-3GT	06	09	12	15	849	283
TM-945-3GT	06	09	12	15	945	315
TM-1050-3GT	06	09	12	15	1050	350
TM-1536-3GT	06	09	12	15	1536	512
TM-1587-3GT	06	09	12	15	1587	529
TM-2061-3GT	06	09	12	15	2061	687

If you don't see the belt you need – call York!

York also manufactures custom pulleys and complete assemblies
 email: support@york-ind.com web: www.york-ind.com

