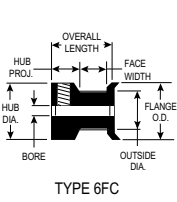
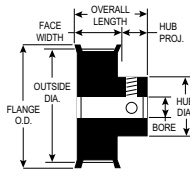


ALUMINUM WITH CLEAR ANODIZE (RoHS compliant)

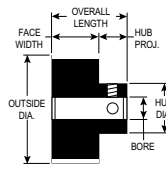
FOR BELTS UP TO 6MM WIDE



TYPE 6FC



TYPE 6F



TYPE 6



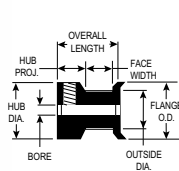
PART NUMBER	NO. OF GROOVES	PITCH DIA.	OUTSIDE DIA.	FLANGE O.D.	TYPE	BORE (+.001 / -.000)	FACE WIDTH	OVERALL LENGTH	HUB DIA.	SET SCREWS
10-3M-06 X 1/8	10	.376	.346	.505	6FC	.1250	.282	9/16	.505	4-40(1)
SAV-10-3M-06 X 1/8	10	.376	.346	.505	6FC	.1250	.282	9/16	.505	4-40(1)
12-3M-06 X 3/16	12	.451	.421	.580	6FC	.1875	.282	9/16	.580	6-40(1)
SAV-12-3M-06 X 3/16	12	.451	.421	.580	6FC	.1875	.282	9/16	.580	6-40(1)
14-3M-06 X 3/16	14	.526	.496	.635	6FC	.1875	.282	9/16	.635	6-40(2)
SAV-14-3M-06 X 3/16	14	.526	.496	.635	6FC	.1875	.282	9/16	.635	6-40(2)
15-3M-06 X 3/16	15	.564	.534	.685	6FC	.1875	.282	9/16	.685	6-40(2)
SAV-15-3M-06 X 3/16	15	.564	.534	.685	6FC	.1875	.282	9/16	.685	6-40(2)
16-3M-06 X 3/16	16	.602	.572	.710	6FC	.1875	.282	9/16	.710	6-40(2)
SAV-16-3M-06 X 3/16	16	.602	.572	.710	6FC	.1875	.282	9/16	.710	6-40(2)
17-3M-06 X 3/16	17	.639	.609	.740	6FC	.1875	.282	9/16	.740	6-40(2)
SAV-17-3M-06 X 3/16	17	.639	.609	.740	6FC	.1875	.282	9/16	.740	6-40(2)
18-3M-06 X 1/4	18	.677	.647	.790	6F	.2500	.386	11/16	.442	8-32(2)
SAV-18-3M-06 X 1/4	18	.677	.647	.790	6F	.2500	.386	11/16	.442	8-32(2)
19-3M-06 X 1/4	19	.714	.684	.827	6F	.2500	.386	11/16	.468	8-32(2)
SAV-19-3M-06 X 1/4	19	.714	.684	.827	6F	.2500	.386	11/16	.468	8-32(2)
20-3M-06 X 1/4	20	.752	.722	.895	6F	.2500	.386	11/16	.500	8-32(2)
SAV-20-3M-06 X 1/4	20	.752	.722	.895	6F	.2500	.386	11/16	.500	8-32(2)
22-3M-06 X 1/4	22	.827	.797	.945	6F	.2500	.386	11/16	.562	8-32(2)
SAV-22-3M-06 X 1/4	22	.827	.797	.945	6F	.2500	.386	11/16	.562	8-32(2)
24-3M-06 X 1/4	24	.902	.872	1.025	6F	.2500	.386	11/16	.625	8-32(2)
SAV-24-3M-06 X 1/4	24	.902	.872	1.025	6F	.2500	.386	11/16	.625	8-32(2)
26-3M-06 X 1/4	26	.977	.947	1.105	6F	.2500	.386	11/16	.625	8-32(2)
SAV-26-3M-06 X 1/4	26	.977	.947	1.105	6F	.2500	.386	11/16	.625	8-32(2)
28-3M-06 X 1/4	28	1.053	1.023	1.173	6F	.2500	.386	11/16	.701	8-32(2)
SAV-28-3M-06 X 1/4	28	1.053	1.023	1.173	6F	.2500	.386	11/16	.701	8-32(2)
30-3M-06 X 1/4	30	1.128	1.098	1.250	6F	.2500	.386	11/16	.776	8-32(2)
SAV-30-3M-06 X 1/4	30	1.128	1.098	1.250	6F	.2500	.386	11/16	.776	8-32(2)
32-3M-06 X 1/4	32	1.203	1.173	1.323	6F	.2500	.386	11/16	.851	8-32(2)
SAV-32-3M-06 X 1/4	32	1.203	1.173	1.323	6F	.2500	.386	11/16	.851	8-32(2)

“SAV-” in front of any standard timing pulley part # represents the Shaft-Saver version. Shaft-Saver pulleys have special setscrews that grip without damage to the shaft and allow easy pulley removal and realignment. For additional information, see our Shaft-Saver Engineering Section.

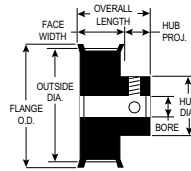


ALUMINUM WITH CLEAR ANODIZE (RoHS compliant)

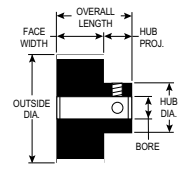
FOR BELTS UP TO 6MM WIDE



TYPE 6FC



TYPE 6F



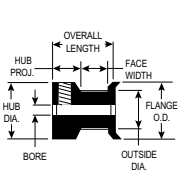
TYPE 6

PART NUMBER	NO. OF GROOVES	PITCH DIA.	OUTSIDE DIA.	FLANGE O.D.	TYPE	BORE (+.001 / -.000)	FACE WIDTH	OVERALL LENGTH	HUB DIA.	SET SCREWS
34-3M-06 X 1/4	34	1.278	1.248	1.398	6F	.2500	.407	23/32	.921	8-32(2)
SAV-34-3M-06 X 1/4	34	1.278	1.248	1.398	6F	.2500	.407	23/32	.921	8-32(2)
36-3M-06 X 1/4	36	1.353	1.324	1.473	6F	.2500	.407	23/32	1.000	8-32(2)
SAV-36-3M-06 X 1/4	36	1.353	1.324	1.473	6F	.2500	.407	23/32	1.000	8-32(2)
38-3M-06 X 1/4	38	1.429	1.399	1.549	6F	.2500	.407	23/32	1.075	8-32(2)
SAV-38-3M-06 X 1/4	38	1.429	1.399	1.549	6F	.2500	.407	23/32	1.075	8-32(2)
40-3M-06 X 1/4	40	1.504	1.474	1.625	6F	.2500	.407	23/32	1.150	8-32(2)
SAV-40-3M-06 X 1/4	40	1.504	1.474	1.625	6F	.2500	.407	23/32	1.150	8-32(2)
44-3M-06 X 1/4	44	1.654	1.624	1.775	6F	.2500	.407	23/32	1.300	8-32(2)
SAV-44-3M-06 X 1/4	44	1.654	1.624	1.775	6F	.2500	.407	23/32	1.300	8-32(2)
50-3M-06 X 5/16	50	1.880	1.850	—	6	.3125	.407	47/64	1.250	8-32(2)
SAV-50-3M-06 X 5/16	50	1.880	1.850	—	6	.3125	.407	47/64	1.250	8-32(2)
56-3M-06 X 5/16	56	2.105	2.075	—	6	.3125	.407	47/64	1.250	8-32(2)
SAV-56-3M-06 X 5/16	56	2.105	2.075	—	6	.3125	.407	47/64	1.250	8-32(2)
62-3M-06 X 5/16	62	2.331	2.301	—	6	.3125	.407	47/64	1.250	8-32(2)
SAV-62-3M-06 X 5/16	62	2.331	2.301	—	6	.3125	.407	47/64	1.250	8-32(2)
72-3M-06 X 5/16	72	2.707	2.677	—	6	.3125	.407	47/64	1.250	8-32(2)
SAV-72-3M-06 X 5/16	72	2.707	2.677	—	6	.3125	.407	47/64	1.250	8-32(2)

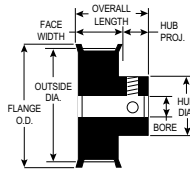
“SAV-” in front of any standard timing pulley part # represents the Shaft-Saver version. Shaft-Saver pulleys have special setscrews that grip without damage to the shaft and allow easy pulley removal and realignment. For additional information, see our Shaft-Saver Engineering Section.

ALUMINUM WITH CLEAR ANODIZE (RoHS compliant)

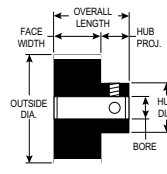
FOR BELTS UP TO 9MM WIDE



TYPE 6FC



TYPE 6F



TYPE 6



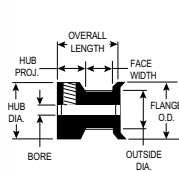
PART NUMBER	NO. OF GROOVES	PITCH DIA.	OUTSIDE DIA.	FLANGE O.D.	TYPE	BORE (+.001) (-.000)	FACE WIDTH	OVERALL LENGTH	HUB DIA.	SET SCREWS
10-3M-09 X 1/8	10	.376	.346	.505	6FC	.1250	.401	11/16	.505	4-40(1)
SAV-10-3M-09 X 1/8	10	.376	.346	.505	6FC	.1250	.401	11/16	.505	4-40(1)
12-3M-09 X 3/16	12	.451	.421	.580	6FC	.1875	.401	11/16	.580	6-40(1)
SAV-12-3M-09 X 3/16	12	.451	.421	.580	6FC	.1875	.401	11/16	.580	6-40(1)
14-3M-09 X 3/16	14	.526	.496	.635	6FC	.1875	.401	11/16	.635	6-40(2)
SAV-14-3M-09 X 3/16	14	.526	.496	.635	6FC	.1875	.401	11/16	.635	6-40(2)
15-3M-09 X 3/16	15	.564	.534	.685	6FC	.1875	.401	11/16	.685	6-40(2)
SAV-15-3M-09 X 3/16	15	.564	.534	.685	6FC	.1875	.401	11/16	.685	6-40(2)
16-3M-09 X 3/16	16	.602	.572	.710	6FC	.1875	.401	11/16	.710	6-40(2)
SAV-16-3M-09 X 3/16	16	.602	.572	.710	6FC	.1875	.401	11/16	.710	6-40(2)
17-3M-09 X 3/16	17	.639	.609	.740	6FC	.1875	.401	11/16	.740	6-40(2)
SAV-17-3M-09 X 3/16	17	.639	.609	.740	6FC	.1875	.401	11/16	.740	6-40(2)
18-3M-09 X 1/4	18	.677	.647	.790	6F	.2500	.506	13/16	.442	8-32(2)
SAV-18-3M-09 X 1/4	18	.677	.647	.790	6F	.2500	.506	13/16	.442	8-32(2)
19-3M-09 X 1/4	19	.714	.684	.827	6F	.2500	.506	13/16	.468	8-32(2)
SAV-19-3M-09 X 1/4	19	.714	.684	.827	6F	.2500	.506	13/16	.468	8-32(2)
20-3M-09 X 1/4	20	.752	.722	.895	6F	.2500	.506	13/16	.500	8-32(2)
SAV-20-3M-09 X 1/4	20	.752	.722	.895	6F	.2500	.506	13/16	.500	8-32(2)
22-3M-09 X 1/4	22	.827	.797	.945	6F	.2500	.506	13/16	.562	8-32(2)
SAV-22-3M-09 X 1/4	22	.827	.797	.945	6F	.2500	.506	13/16	.562	8-32(2)
24-3M-09 X 1/4	24	.902	.872	1.025	6F	.2500	.506	13/16	.625	8-32(2)
SAV-24-3M-09 X 1/4	24	.902	.872	1.025	6F	.2500	.506	13/16	.625	8-32(2)
26-3M-09 X 1/4	26	.977	.947	1.105	6F	.2500	.506	13/16	.625	8-32(2)
SAV-26-3M-09 X 1/4	26	.977	.947	1.105	6F	.2500	.506	13/16	.625	8-32(2)
28-3M-09 X 1/4	28	1.053	1.023	1.173	6F	.2500	.506	13/16	.701	8-32(2)
SAV-28-3M-09 X 1/4	28	1.053	1.023	1.173	6F	.2500	.506	13/16	.701	8-32(2)
30-3M-09 X 1/4	30	1.128	1.098	1.250	6F	.2500	.506	13/16	.776	8-32(2)
SAV-30-3M-09 X 1/4	30	1.128	1.098	1.250	6F	.2500	.506	13/16	.776	8-32(2)
32-3M-09 X 1/4	32	1.203	1.173	1.323	6F	.2500	.506	13/16	.851	8-32(2)
SAV-32-3M-09 X 1/4	32	1.203	1.173	1.323	6F	.2500	.506	13/16	.851	8-32(2)

“SAV-” in front of any standard timing pulley part # represents the Shaft-Saver version. Shaft-Saver pulleys have special setscrews that grip without damage to the shaft and allow easy pulley removal and realignment. For additional information, see our Shaft-Saver Engineering Section.

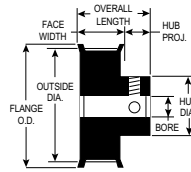


ALUMINUM WITH CLEAR ANODIZE (RoHS compliant)

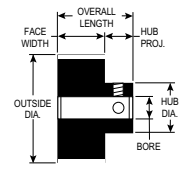
FOR BELTS UP TO 9MM WIDE



TYPE 6FC



TYPE 6F



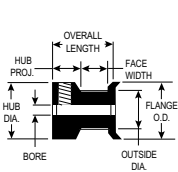
TYPE 6

PART NUMBER	NO. OF GROOVES	PITCH DIA.	OUTSIDE DIA.	FLANGE O.D.	TYPE	BORE (+.001) (-.000)	FACE WIDTH	OVERALL LENGTH	HUB DIA.	SET SCREWS
34-3M-09 X 1/4	34	1.278	1.248	1.398	6F	.2500	.527	27/32	.921	8-32(2)
SAV-34-3M-09 X 1/4	34	1.278	1.248	1.398	6F	.2500	.527	27/32	.921	8-32(2)
36-3M-09 X 1/4	36	1.353	1.324	1.473	6F	.2500	.527	27/32	1.000	8-32(2)
SAV-36-3M-09 X 1/4	36	1.353	1.324	1.473	6F	.2500	.527	27/32	1.000	8-32(2)
38-3M-09 X 1/4	38	1.429	1.399	1.549	6F	.2500	.527	27/32	1.075	8-32(2)
SAV-38-3M-09 X 1/4	38	1.429	1.399	1.549	6F	.2500	.527	27/32	1.075	8-32(2)
40-3M-09 X 1/4	40	1.504	1.474	1.625	6F	.2500	.527	27/32	1.150	8-32(2)
SAV-40-3M-09 X 1/4	40	1.504	1.474	1.625	6F	.2500	.527	27/32	1.150	8-32(2)
44-3M-09 X 1/4	44	1.654	1.624	1.775	6F	.2500	.527	27/32	1.300	8-32(2)
SAV-44-3M-09 X 1/4	44	1.654	1.624	1.775	6F	.2500	.527	27/32	1.300	8-32(2)
50-3M-09 X 5/16	50	1.880	1.850	—	6	.3125	.500	7/8	1.250	8-32(2)
SAV-50-3M-09 X 5/16	50	1.880	1.850	—	6	.3125	.500	7/8	1.250	8-32(2)
56-3M-09 X 5/16	56	2.105	2.075	—	6	.3125	.500	7/8	1.250	8-32(2)
SAV-56-3M-09 X 5/16	56	2.105	2.075	—	6	.3125	.500	7/8	1.250	8-32(2)
62-3M-09 X 5/16	62	2.331	2.301	—	6	.3125	.500	7/8	1.250	8-32(2)
SAV-62-3M-09 X 5/16	62	2.331	2.301	—	6	.3125	.500	7/8	1.250	8-32(2)
72-3M-09 X 5/16	72	2.707	2.677	—	6	.3125	.500	7/8	1.250	8-32(2)
SAV-72-3M-09 X 5/16	72	2.707	2.677	—	6	.3125	.500	7/8	1.250	8-32(2)

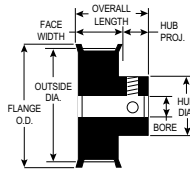
“SAV-” in front of any standard timing pulley part # represents the Shaft-Saver version. Shaft-Saver pulleys have special setscrews that grip without damage to the shaft and allow easy pulley removal and realignment. For additional information, see our Shaft-Saver Engineering Section.

ALUMINUM WITH CLEAR ANODIZE (RoHS compliant)

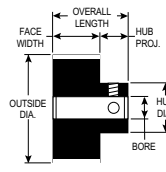
FOR BELTS UP TO 15MM WIDE



TYPE 6FC



TYPE 6F



TYPE 6



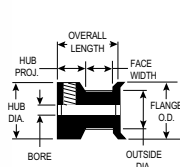
PART NUMBER	NO. OF GROOVES	PITCH DIA.	OUTSIDE DIA.	FLANGE O.D.	TYPE	BORE		OVERALL LENGTH	HUB DIA.	SET SCREWS
						(+.001)	(-.000)			
10-3M-15 X 1/8	10	.376	.346	.505	6FC	.1250	.637	.927	.505	4-40(1)
SAV-10-3M-15 X 1/8	10	.376	.346	.505	6FC	.1250	.637	.927	.505	4-40(1)
12-3M-15 X 3/16	12	.451	.421	.580	6FC	.1875	.637	.927	.580	6-40(1)
SAV-12-3M-15 X 3/16	12	.451	.421	.580	6FC	.1875	.637	.927	.580	6-40(1)
14-3M-15 X 3/16	14	.526	.496	.635	6FC	.1875	.637	.927	.635	6-40(2)
SAV-14-3M-15 X 3/16	14	.526	.496	.635	6FC	.1875	.637	.927	.635	6-40(2)
15-3M-15 X 3/16	15	.564	.534	.685	6FC	.1875	.637	.927	.685	6-40(2)
SAV-15-3M-15 X 3/16	15	.564	.534	.685	6FC	.1875	.637	.927	.685	6-40(2)
16-3M-15 X 3/16	16	.602	.572	.710	6FC	.1875	.637	.927	.710	6-40(2)
SAV-16-3M-15 X 3/16	16	.602	.572	.710	6FC	.1875	.637	.927	.710	6-40(2)
17-3M-15 X 3/16	17	.639	.609	.740	6FC	.1875	.637	.927	.740	6-40(2)
SAV-17-3M-15 X 3/16	17	.639	.609	.740	6FC	.1875	.637	.927	.740	6-40(2)
18-3M-15 X 1/4	18	.677	.647	.790	6F	.2500	.742	1.057	.442	8-32(2)
SAV-18-3M-15 X 1/4	18	.677	.647	.790	6F	.2500	.742	1.057	.442	8-32(2)
19-3M-15 X 1/4	19	.714	.684	.827	6F	.2500	.742	1.057	.468	8-32(2)
SAV-19-3M-15 X 1/4	19	.714	.684	.827	6F	.2500	.742	1.057	.468	8-32(2)
20-3M-15 X 1/4	20	.752	.722	.895	6F	.2500	.742	1.057	.500	8-32(2)
SAV-20-3M-15 X 1/4	20	.752	.722	.895	6F	.2500	.742	1.057	.500	8-32(2)
22-3M-15 X 1/4	22	.827	.797	.945	6F	.2500	.742	1.057	.562	8-32(2)
SAV-22-3M-15 X 1/4	22	.827	.797	.945	6F	.2500	.742	1.057	.562	8-32(2)
24-3M-15 X 1/4	24	.902	.872	1.025	6F	.2500	.742	1.057	.625	8-32(2)
SAV-24-3M-15 X 1/4	24	.902	.872	1.025	6F	.2500	.742	1.057	.625	8-32(2)
26-3M-15 X 1/4	26	.977	.947	1.105	6F	.2500	.742	1.057	.625	8-32(2)
SAV-26-3M-15 X 1/4	26	.977	.947	1.105	6F	.2500	.742	1.057	.625	8-32(2)
28-3M-15 X 1/4	28	1.053	1.023	1.173	6F	.2500	.742	1.057	.701	8-32(2)
SAV-28-3M-15 X 1/4	28	1.053	1.023	1.173	6F	.2500	.742	1.057	.701	8-32(2)
30-3M-15 X 1/4	30	1.128	1.098	1.250	6F	.2500	.742	1.057	.776	8-32(2)
SAV-30-3M-15 X 1/4	30	1.128	1.098	1.250	6F	.2500	.742	1.057	.776	8-32(2)
32-3M-15 X 1/4	32	1.203	1.173	1.323	6F	.2500	.742	1.057	.851	8-32(2)
SAV-32-3M-15 X 1/4	32	1.203	1.173	1.323	6F	.2500	.742	1.057	.851	8-32(2)

“SAV-” in front of any standard timing pulley part # represents the Shaft-Saver version. Shaft-Saver pulleys have special setscrews that grip without damage to the shaft and allow easy pulley removal and realignment. For additional information, see our Shaft-Saver Engineering Section.

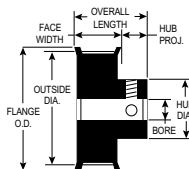


ALUMINUM WITH CLEAR ANODIZE (RoHS compliant)

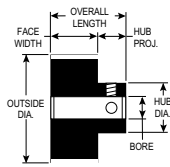
FOR BELTS UP TO 15MM WIDE



TYPE 6FC



TYPE 6F

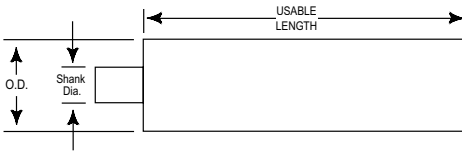


TYPE 6

PART NUMBER	NO. OF GROOVES	PITCH DIA.	OUTSIDE DIA.	FLANGE O.D.	BORE TYPE	BORE (+.001 / -.000)	FACE WIDTH	OVERALL LENGTH	HUB DIA.	SET SCREWS
34-3M-15 X 1/4	34	1.278	1.248	1.398	6F	.2500	.763	1.069	.921	8-32(2)
SAV-34-3M-15 X 1/4	34	1.278	1.248	1.398	6F	.2500	.763	1.069	.921	8-32(2)
36-3M-15 X 1/4	36	1.353	1.324	1.473	6F	.2500	.763	1.069	1.000	8-32(2)
SAV-36-3M-15 X 1/4	36	1.353	1.324	1.473	6F	.2500	.763	1.069	1.000	8-32(2)
38-3M-15 X 1/4	38	1.429	1.399	1.549	6F	.2500	.763	1.069	1.075	8-32(2)
SAV-38-3M-15 X 1/4	38	1.429	1.399	1.549	6F	.2500	.763	1.069	1.075	8-32(2)
40-3M-15 X 1/4	40	1.504	1.474	1.625	6F	.2500	.763	1.069	1.150	8-32(2)
SAV-40-3M-15 X 1/4	40	1.504	1.474	1.625	6F	.2500	.763	1.069	1.150	8-32(2)
44-3M-15 X 1/4	44	1.654	1.624	1.775	6F	.2500	.763	1.069	1.300	8-32(2)
SAV-44-3M-15 X 1/4	44	1.654	1.624	1.775	6F	.2500	.763	1.069	1.300	8-32(2)
50-3M-15 X 5/16	50	1.880	1.850	—	6	.3125	.736	1.111	1.250	8-32(2)
SAV-50-3M-15 X 5/16	50	1.880	1.850	—	6	.3125	.736	1.111	1.250	8-32(2)
56-3M-15 X 5/16	56	2.105	2.075	—	6	.3125	.736	1.111	1.250	8-32(2)
SAV-56-3M-15 X 5/16	56	2.105	2.075	—	6	.3125	.736	1.111	1.250	8-32(2)
62-3M-15 X 5/16	62	2.331	2.301	—	6	.3125	.736	1.111	1.250	8-32(2)
SAV-62-3M-15 X 5/16	62	2.331	2.301	—	6	.3125	.736	1.111	1.250	8-32(2)
72-3M-15 X 5/16	72	2.707	2.677	—	6	.3125	.736	1.111	1.250	8-32(2)
SAV-72-3M-15 X 5/16	72	2.707	2.677	—	6	.3125	.736	1.111	1.250	8-32(2)

“SAV-” in front of any standard timing pulley part # represents the Shaft-Saver version. Shaft-Saver pulleys have special setscrews that grip without damage to the shaft and allow easy pulley removal and realignment. For additional information, see our Shaft-Saver Engineering Section.

ALUMINUM 6061-T6 (RoHS compliant)

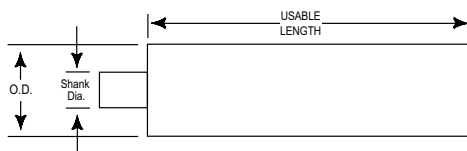


PART NUMBER	NO. OF GROOVES	PITCH DIA.	OUTSIDE DIA.	SHANK DIA.	USEABLE LENGTH
9-3M-P-3A	9	.338	.308	3/8	3"
10-3M-P-3A	10	.376	.346	3/8	3"
11-3M-P-3A	11	.414	.384	3/8	3"
12-3M-P-4A	12	.451	.421	3/8	4"
13-3M-P-4A	13	.489	.459	7/16	4"
14-3M-P-4A	14	.526	.496	7/16	4"
15-3M-P-4A	15	.564	.534	1/2	4"
16-3M-P-5A	16	.602	.572	1/2	5"
17-3M-P-5A	17	.639	.609	1/2	5"
18-3M-P-5A	18	.677	.647	1/2	5"
19-3M-P-5A	19	.714	.684	1/2	5"
20-3M-P-6A	20	.752	.722	1/2	6"
21-3M-P-6A	21	.790	.760	1/2	6"
22-3M-P-6A	22	.827	.797	1/2	6"
23-3M-P-6A	23	.865	.835	1/2	6"
24-3M-P-6A	24	.902	.872	1/2	6"
25-3M-P-6A	25	.940	.910	1/2	6"
26-3M-P-6A	26	.977	.947	1/2	6"
27-3M-P-6A	27	1.015	.985	1/2	6"
28-3M-P-6A	28	1.053	1.023	1/2	6"
29-3M-P-6A	29	1.090	1.060	1/2	6"
30-3M-P-7A	30	1.128	1.098	1/2	7"
31-3M-P-7A	31	1.165	1.135	1/2	7"
32-3M-P-7A	32	1.203	1.173	1/2	7"
33-3M-P-7A	33	1.241	1.211	1/2	7"
34-3M-P-7A	34	1.278	1.248	1/2	7"
35-3M-P-7A	35	1.316	1.286	1/2	7"

York also manufactures custom pulleys and complete assemblies
 email: support@york-ind.com web: www.york-ind.com

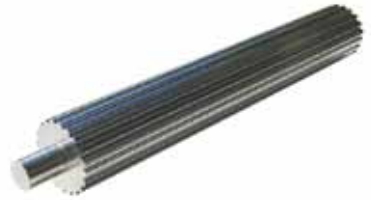
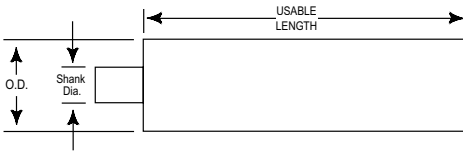


ALUMINUM 6061-T6 (RoHS compliant)



PART NUMBER	NO. OF GROOVES	PITCH DIA.	OUTSIDE DIA.	SHANK DIA.	USEABLE LENGTH
36-3M-P-8A	36	1.353	1.323	1/2	8"
37-3M-P-8A	37	1.391	1.361	1/2	8"
38-3M-P-8A	38	1.429	1.399	1/2	8"
39-3M-P-8A	39	1.466	1.436	1/2	8"
40-3M-P-8A	40	1.504	1.474	1/2	8"
42-3M-P-8A	42	1.579	1.549	1/2	8"
44-3M-P-8A	44	1.654	1.624	1/2	8"
45-3M-P-8A	45	1.692	1.662	1/2	8"
48-3M-P-8A	48	1.805	1.775	1/2	8"
50-3M-P-8A	50	1.880	1.850	3/4	8"
52-3M-P-8A	52	1.955	1.925	3/4	8"
54-3M-P-8A	54	2.030	2.000	3/4	8"
56-3M-P-8A	56	2.105	2.075	3/4	8"
60-3M-P-8A	60	2.256	2.226	3/4	8"
62-3M-P-8A	62	2.331	2.301	3/4	8"
64-3M-P-8A	64	2.406	2.376	3/4	8"
66-3M-P-8A	66	2.481	2.451	3/4	8"
68-3M-P-8A	68	2.557	2.527	3/4	8"
70-3M-P-8A	70	2.632	2.602	3/4	8"
72-3M-P-8A	72	2.707	2.677	3/4	8"
75-3M-P-8A	75	2.820	2.790	3/4	8"
80-3M-P-8A	80	3.008	2.978	3/4	8"
90-3M-P-8A	90	3.384	3.354	3/4	8"
100-3M-P-8A	100	3.760	3.730	1	8"
110-3M-P-8A	110	4.136	4.106	1	8"
120-3M-P-8A	120	4.511	4.481	1	8"
130-3M-P-8A	130	4.887	4.857	1	8"
140-3M-P-8A	140	5.263	5.233	1	8"
150-3M-P-8A	150	5.639	5.609	1	8"
160-3M-P-8A	160	6.015	5.985	1	8"

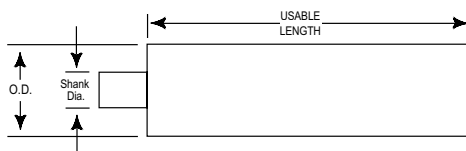
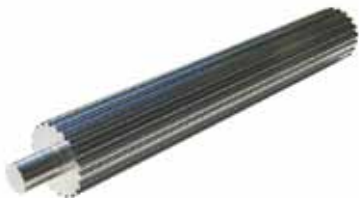
STEEL (RoHS compliant)



PART NUMBER	NO. OF GROOVES	PITCH DIA.	OUTSIDE DIA.	SHANK DIA.	USEABLE LENGTH
9-3M-P-3S	9	.338	.308	3/8	3"
10-3M-P-3S	10	.376	.346	3/8	3"
11-3M-P-3S	11	.414	.384	3/8	3"
12-3M-P-4S	12	.451	.421	3/8	4"
13-3M-P-4S	13	.489	.459	7/16	4"
14-3M-P-4S	14	.526	.496	7/16	4"
15-3M-P-4S	15	.564	.534	1/2	4"
16-3M-P-5S	16	.602	.572	1/2	5"
17-3M-P-5S	17	.639	.609	1/2	5"
18-3M-P-5S	18	.677	.647	1/2	5"
19-3M-P-5S	19	.714	.684	1/2	5"
20-3M-P-6S	20	.752	.722	1/2	6"
21-3M-P-6S	21	.790	.760	1/2	6"
22-3M-P-6S	22	.827	.797	1/2	6"
23-3M-P-6S	23	.865	.835	1/2	6"
24-3M-P-6S	24	.902	.872	1/2	6"
25-3M-P-6S	25	.940	.910	1/2	6"
26-3M-P-6S	26	.977	.947	1/2	6"
27-3M-P-6S	27	1.015	.985	1/2	6"
28-3M-P-6S	28	1.053	1.023	1/2	6"
29-3M-P-6S	29	1.090	1.060	1/2	6"
30-3M-P-7S	30	1.128	1.098	1/2	7"
31-3M-P-7S	31	1.165	1.135	1/2	7"
32-3M-P-7S	32	1.203	1.173	1/2	7"
33-3M-P-7S	33	1.241	1.211	1/2	7"
34-3M-P-7S	34	1.278	1.248	1/2	7"
35-3M-P-7S	35	1.316	1.286	1/2	7"

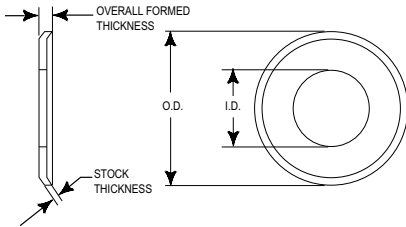


STEEL (RoHS compliant)



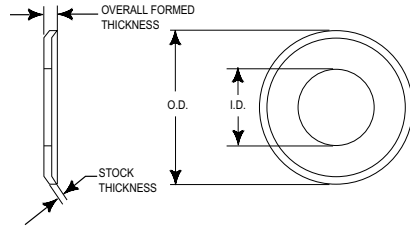
PART NUMBER	NO. OF GROOVES	PITCH DIA.	OUTSIDE DIA.	SHANK DIA.	USEABLE LENGTH
36-3M-P-8S	36	1.353	1.323	1/2	8"
37-3M-P-8S	37	1.391	1.361	1/2	8"
38-3M-P-8S	38	1.429	1.399	1/2	8"
39-3M-P-8S	39	1.466	1.436	1/2	8"
40-3M-P-8S	40	1.504	1.474	1/2	8"
42-3M-P-8S	42	1.579	1.549	1/2	8"
44-3M-P-8S	44	1.654	1.624	1/2	8"
45-3M-P-8S	45	1.692	1.662	1/2	8"
48-3M-P-8S	48	1.805	1.775	1/2	8"
50-3M-P-8S	50	1.880	1.850	3/4	8"
52-3M-P-8S	52	1.955	1.925	3/4	8"
54-3M-P-8S	54	2.030	2.000	3/4	8"
56-3M-P-8S	56	2.105	2.075	3/4	8"
60-3M-P-8S	60	2.256	2.226	3/4	8"
62-3M-P-8S	62	2.331	2.301	3/4	8"
64-3M-P-8S	64	2.406	2.376	3/4	8"
66-3M-P-8S	66	2.481	2.451	3/4	8"
68-3M-P-8S	68	2.557	2.527	3/4	8"
70-3M-P-8S	70	2.632	2.602	3/4	8"
72-3M-P-8S	72	2.707	2.677	3/4	8"
75-3M-P-8S	75	2.820	2.790	3/4	8"
80-3M-P-8S	80	3.008	2.978	3/4	8"
90-3M-P-8S	90	3.384	3.354	3/4	8"
100-3M-P-8S	100	3.760	3.730	1	8"
110-3M-P-8S	110	4.136	4.106	1	8"
120-3M-P-8S	120	4.511	4.481	1	8"
130-3M-P-8S	130	4.887	4.857	1	8"
140-3M-P-8S	140	5.263	5.233	1	8"
150-3M-P-8S	150	5.639	5.609	1	8"

ALUMINUM (RoHS compliant)



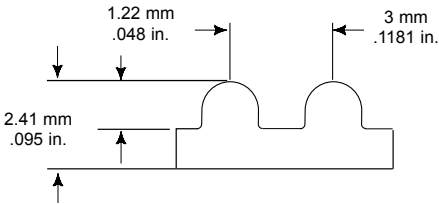
PART NUMBER	INSIDE DIA.	OUTSIDE DIA.	STOCK THICKNESS	OVERALL FORMED THICKNESS
10-3M-F5A	.244	.505	.025	.045
11-3M-F5A	.270	.530	.025	.045
12-3M-F5A	.322	.580	.025	.045
13-3M-F5A	.350	.610	.025	.045
14-3M-F5A	.374	.635	.032	.052
15-3M-F5A	.426	.685	.032	.052
16-3M-F5A	.452	.710	.032	.052
17-3M-F5A	.452	.740	.032	.052
18-3M-F5A	.504	.790	.032	.052
19-3M-F5A	.541	.827	.032	.052
20-3M-F5A	.574	.895	.032	.052
22-3M-F5A	.626	.945	.032	.052
24-3M-F5A	.704	1.025	.032	.052
25-3M-F5A	.738	1.060	.032	.052
26-3M-F5A	.774	1.105	.032	.052
28-3M-F5A	.849	1.173	.032	.052
30-3M-F5A	.924	1.250	.032	.052
32-3M-F5A	.999	1.323	.032	.052
34-3M-F5A	1.074	1.398	.040	.060
36-3M-F5A	1.149	1.478	.040	.060
38-3M-F5A	1.225	1.549	.040	.060
40-3M-F5A	1.300	1.625	.040	.060
44-3M-F5A	1.450	1.775	.040	.060

STEEL (RoHS compliant)



PART NUMBER	INSIDE DIA.	OUTSIDE DIA.	STOCK THICKNESS	OVERALL FORMED THICKNESS
10-3M-F6S	.244	.505	.025	.045
11-3M-F6S	.270	.530	.025	.045
12-3M-F6S	.322	.580	.025	.045
13-3M-F6S	.350	.610	.025	.045
14-3M-F6S	.374	.635	.032	.052
15-3M-F6S	.426	.685	.032	.052
16-3M-F6S	.452	.710	.032	.052
17-3M-F6S	.452	.740	.032	.052
18-3M-F6S	.504	.790	.032	.052
19-3M-F6S	.541	.827	.032	.052
20-3M-F6S	.574	.895	.032	.052
22-3M-F6S	.626	.945	.032	.052
24-3M-F6S	.704	1.025	.032	.052
25-3M-F6S	.738	1.060	.032	.052
26-3M-F6S	.774	1.105	.032	.052
28-3M-F6S	.849	1.173	.032	.052
30-3M-F6S	.924	1.250	.032	.052
32-3M-F6S	.999	1.323	.032	.052
34-3M-F6S	1.074	1.398	.040	.060
36-3M-F6S	1.149	1.478	.040	.060
38-3M-F6S	1.225	1.549	.040	.060
40-3M-F6S	1.300	1.625	.040	.060
44-3M-F6S	1.450	1.775	.040	.060

BLACK NEOPRENE, Fiberglass Cord (RoHS compliant)



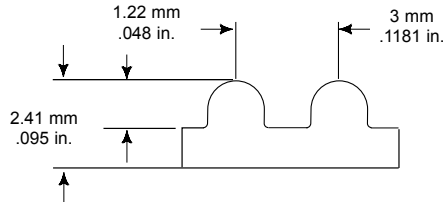
BELT NUMBER	WIDTHS			PITCH LENGTH (MM)	NO. OF TEETH	BELT NUMBER	WIDTHS			PITCH LENGTH (MM)	NO. OF TEETH
	6MM	9MM	15MM				6MM	9MM	15MM		
87-3M	06	09	15	87	29	219-3M	06	09	15	219	73
102-3M	06	09	15	102	34	222-3M	06	09	15	222	74
105-3M	06	09	15	105	35	225-3M	06	09	15	225	75
111-3M	06	09	15	111	37	228-3M	06	09	15	228	76
123-3M	06	09	15	123	41	234-3M	06	09	15	234	78
126-3M	06	09	15	126	42	237-3M	06	09	15	237	79
129-3M	06	09	15	129	43	240-3M	06	09	15	240	80
141-3M	06	09	15	141	47	246-3M	06	09	15	246	82
144-3M	06	09	15	144	48	249-3M	06	09	15	249	83
147-3M	06	09	15	147	49	252-3M	06	09	15	252	84
150-3M	06	09	15	150	50	255-3M	06	09	15	255	85
156-3M	06	09	15	156	52	258-3M	06	09	15	258	86
159-3M	06	09	15	159	53	261-3M	06	09	15	261	87
165-3M	06	09	15	165	55	264-3M	06	09	15	264	88
168-3M	06	09	15	168	56	267-3M	06	09	15	267	89
174-3M	06	09	15	174	58	270-3M	06	09	15	270	90
177-3M	06	09	15	177	59	276-3M	06	09	15	276	92
180-3M	06	09	15	180	60	282-3M	06	09	15	282	94
183-3M	06	09	15	183	61	285-3M	06	09	15	285	95
186-3M	06	09	15	186	62	288-3M	06	09	15	288	96
189-3M	06	09	15	189	63	291-3M	06	09	15	291	97
192-3M	06	09	15	192	64	294-3M	06	09	15	294	98
195-3M	06	09	15	195	65	297-3M	06	09	15	297	99
201-3M	06	09	15	201	67	300-3M	06	09	15	300	100
204-3M	06	09	15	204	68	306-3M	06	09	15	306	102
207-3M	06	09	15	207	69	312-3M	06	09	15	312	104
210-3M	06	09	15	210	70	315-3M	06	09	15	315	105
213-3M	06	09	15	213	71	318-3M	06	09	15	318	106
216-3M	06	09	15	216	72	324-3M	06	09	15	324	108

Need a clean, low dust belt? See TruMotion belts.

York also manufactures custom pulleys and complete assemblies
 email: support@york-ind.com web: www.york-ind.com



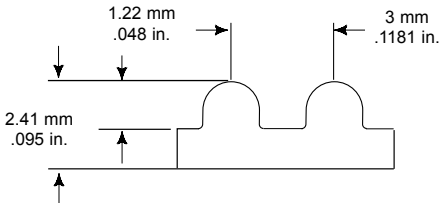
BLACK NEOPRENE, Fiberglass Cord (RoHS compliant)



BELT NUMBER	WIDTHS			PITCH LENGTH (MM)	NO. OF TEETH	BELT NUMBER	WIDTHS			PITCH LENGTH (MM)	NO. OF TEETH
	6MM	9MM	15MM				6MM	9MM	15MM		
330-3M	06	09	15	330	110	468-3M	06	09	15	468	156
333-3M	06	09	15	333	111	471-3M	06	09	15	471	157
336-3M	06	09	15	336	112	474-3M	06	09	15	474	158
339-3M	06	09	15	339	113	477-3M	06	09	15	477	159
345-3M	06	09	15	345	115	480-3M	06	09	15	480	160
357-3M	06	09	15	357	119	486-3M	06	09	15	486	162
360-3M	06	09	15	360	120	489-3M	06	09	15	489	163
363-3M	06	09	15	363	121	492-3M	06	09	15	492	164
366-3M	06	09	15	366	122	501-3M	06	09	15	501	167
369-3M	06	09	15	369	123	510-3M	06	09	15	510	170
372-3M	06	09	15	372	124	513-3M	06	09	15	513	171
381-3M	06	09	15	381	127	519-3M	06	09	15	519	173
384-3M	06	09	15	384	128	522-3M	06	09	15	522	174
390-3M	06	09	15	390	130	525-3M	06	09	15	525	175
396-3M	06	09	15	396	132	528-3M	06	09	15	528	176
399-3M	06	09	15	399	133	531-3M	06	09	15	531	177
405-3M	06	09	15	405	135	537-3M	06	09	15	537	179
411-3M	06	09	15	411	137	552-3M	06	09	15	552	184
417-3M	06	09	15	417	139	558-3M	06	09	15	558	186
420-3M	06	09	15	420	140	564-3M	06	09	15	564	188
426-3M	06	09	15	426	142	570-3M	06	09	15	570	190
432-3M	06	09	15	432	144	573-3M	06	09	15	573	191
435-3M	06	09	15	435	145	576-3M	06	09	15	576	192
438-3M	06	09	15	438	146	582-3M	06	09	15	582	194
444-3M	06	09	15	444	148	585-3M	06	09	15	585	195
447-3M	06	09	15	447	149	591-3M	06	09	15	591	197
462-3M	06	09	15	462	154	594-3M	06	09	15	594	198
465-3M	06	09	15	465	155	597-3M	06	09	15	597	199

If you don't see the belt you need – call York!

BLACK NEOPRENE, Fiberglass Cord (RoHS compliant)



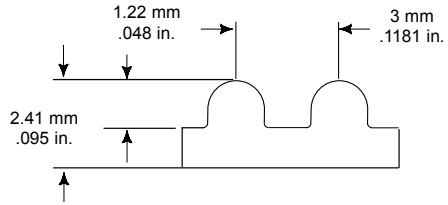
BELT NUMBER	WIDTHS			PITCH LENGTH (MM)	NO. OF TEETH	BELT NUMBER	WIDTHS			PITCH LENGTH (MM)	NO. OF TEETH
	6MM	9MM	15MM				6MM	9MM	15MM		
600-3M	06	09	15	600	200	873-3M	06	09	15	873	291
606-3M	06	09	15	606	202	882-3M	06	09	15	882	294
609-3M	06	09	15	609	203	891-3M	06	09	15	891	297
612-3M	06	09	15	612	204	900-3M	06	09	15	900	300
627-3M	06	09	15	627	209	915-3M	06	09	15	915	305
633-3M	06	09	15	633	211	945-3M	06	09	15	945	315
639-3M	06	09	15	639	213	951-3M	06	09	15	951	317
645-3M	06	09	15	645	215	981-3M	06	09	15	981	327
648-3M	06	09	15	648	216	1002-3M	06	09	15	1002	334
654-3M	06	09	15	654	218	1026-3M	06	09	15	1026	342
657-3M	06	09	15	657	219	1035-3M	06	09	15	1035	345
663-3M	06	09	15	663	221	1056-3M	06	09	15	1056	352
669-3M	06	09	15	669	223	1062-3M	06	09	15	1062	354
672-3M	06	09	15	672	224	1071-3M	06	09	15	1071	357
681-3M	06	09	15	681	227	1080-3M	06	09	15	1080	360
684-3M	06	09	15	684	228	1125-3M	06	09	15	1125	375
687-3M	06	09	15	687	229	1155-3M	06	09	15	1155	385
696-3M	06	09	15	696	232	1191-3M	06	09	15	1191	397
711-3M	06	09	15	711	237	1245-3M	06	09	15	1245	415
720-3M	06	09	15	720	240	1263-3M	06	09	15	1263	421
735-3M	06	09	15	735	245	1500-3M	06	09	15	1500	500
738-3M	06	09	15	738	246	1512-3M	06	09	15	1512	504
753-3M	06	09	15	753	251	1530-3M	06	09	15	1530	510
795-3M	06	09	15	795	265	1587-3M	06	09	15	1587	529
804-3M	06	09	15	804	268	1863-3M	06	09	15	1863	621
822-3M	06	09	15	822	274	1926-3M	06	09	15	1926	642
837-3M	06	09	15	837	279	1956-3M	06	09	15	1956	652
843-3M	06	09	15	843	281	2004-3M	06	09	15	2004	668

Need a clean, low dust belt? See TruMotion belts.

York also manufactures custom pulleys and complete assemblies
 email: support@york-ind.com web: www.york-ind.com



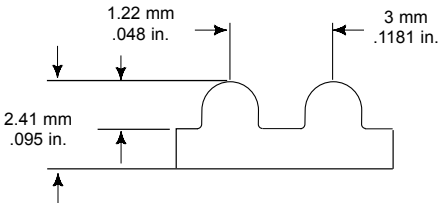
Cream Colored Engineered Polymer with Fiberglass Cord (RoHS compliant)



BELT NUMBER	WIDTHS			PITCH LENGTH (MM)	NO. OF TEETH	BELT NUMBER	WIDTHS			PITCH LENGTH (MM)	NO. OF TEETH
	6MM	9MM	15MM				6MM	9MM	15MM		
TM-87-3M	06	09	15	87	29	TM-219-3M	06	09	15	219	73
TM-102-3M	06	09	15	102	34	TM-222-3M	06	09	15	222	74
TM-105-3M	06	09	15	105	35	TM-225-3M	06	09	15	225	75
TM-111-3M	06	09	15	111	37	TM-228-3M	06	09	15	228	76
TM-123-3M	06	09	15	123	41	TM-234-3M	06	09	15	234	78
TM-126-3M	06	09	15	126	42	TM-237-3M	06	09	15	237	79
TM-129-3M	06	09	15	129	43	TM-240-3M	06	09	15	240	80
TM-141-3M	06	09	15	141	47	TM-246-3M	06	09	15	246	82
TM-144-3M	06	09	15	144	48	TM-249-3M	06	09	15	249	83
TM-147-3M	06	09	15	147	49	TM-252-3M	06	09	15	252	84
TM-150-3M	06	09	15	150	50	TM-255-3M	06	09	15	255	85
TM-156-3M	06	09	15	156	52	TM-258-3M	06	09	15	258	86
TM-159-3M	06	09	15	159	53	TM-261-3M	06	09	15	261	87
TM-165-3M	06	09	15	165	55	TM-264-3M	06	09	15	264	88
TM-168-3M	06	09	15	168	56	TM-267-3M	06	09	15	267	89
TM-174-3M	06	09	15	174	58	TM-270-3M	06	09	15	270	90
TM-177-3M	06	09	15	177	59	TM-276-3M	06	09	15	276	92
TM-180-3M	06	09	15	180	60	TM-282-3M	06	09	15	282	94
TM-183-3M	06	09	15	183	61	TM-285-3M	06	09	15	285	95
TM-186-3M	06	09	15	186	62	TM-288-3M	06	09	15	288	96
TM-189-3M	06	09	15	189	63	TM-291-3M	06	09	15	291	97
TM-192-3M	06	09	15	192	64	TM-294-3M	06	09	15	294	98
TM-195-3M	06	09	15	195	65	TM-297-3M	06	09	15	297	99
TM-201-3M	06	09	15	201	67	TM-300-3M	06	09	15	300	100
TM-204-3M	06	09	15	204	68	TM-306-3M	06	09	15	306	102
TM-207-3M	06	09	15	207	69	TM-312-3M	06	09	15	312	104
TM-210-3M	06	09	15	210	70	TM-315-3M	06	09	15	315	105
TM-213-3M	06	09	15	213	71	TM-318-3M	06	09	15	318	106
TM-216-3M	06	09	15	216	72	TM-324-3M	06	09	15	324	108

If you don't see the belt you need – call York!

Cream Colored Engineered Polymer with Fiberglass Cord (RoHS compliant)



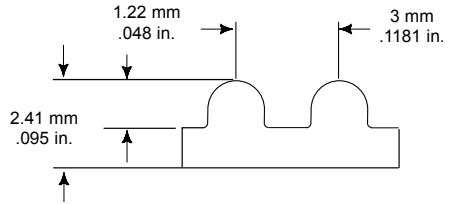
BELT NUMBER	WIDTHS			PITCH LENGTH (MM)	NO. OF TEETH	BELT NUMBER	WIDTHS			PITCH LENGTH (MM)	NO. OF TEETH
	6MM	9MM	15MM				6MM	9MM	15MM		
TM-330-3M	06	09	15	330	110	TM-468-3M	06	09	15	468	156
TM-333-3M	06	09	15	333	111	TM-471-3M	06	09	15	471	157
TM-336-3M	06	09	15	336	112	TM-474-3M	06	09	15	474	158
TM-339-3M	06	09	15	339	113	TM-477-3M	06	09	15	477	159
TM-345-3M	06	09	15	345	115	TM-480-3M	06	09	15	480	160
TM-357-3M	06	09	15	357	119	TM-486-3M	06	09	15	486	162
TM-360-3M	06	09	15	360	120	TM-489-3M	06	09	15	489	163
TM-363-3M	06	09	15	363	121	TM-492-3M	06	09	15	492	164
TM-366-3M	06	09	15	366	122	TM-501-3M	06	09	15	501	167
TM-369-3M	06	09	15	369	123	TM-510-3M	06	09	15	510	170
TM-372-3M	06	09	15	372	124	TM-513-3M	06	09	15	513	171
TM-381-3M	06	09	15	381	127	TM-519-3M	06	09	15	519	173
TM-384-3M	06	09	15	384	128	TM-522-3M	06	09	15	522	174
TM-390-3M	06	09	15	390	130	TM-525-3M	06	09	15	525	175
TM-396-3M	06	09	15	396	132	TM-528-3M	06	09	15	528	176
TM-399-3M	06	09	15	399	133	TM-531-3M	06	09	15	531	177
TM-405-3M	06	09	15	405	135	TM-537-3M	06	09	15	537	179
TM-411-3M	06	09	15	411	137	TM-552-3M	06	09	15	552	184
TM-417-3M	06	09	15	417	139	TM-558-3M	06	09	15	558	186
TM-420-3M	06	09	15	420	140	TM-564-3M	06	09	15	564	188
TM-426-3M	06	09	15	426	142	TM-570-3M	06	09	15	570	190
TM-432-3M	06	09	15	432	144	TM-573-3M	06	09	15	573	191
TM-435-3M	06	09	15	435	145	TM-576-3M	06	09	15	576	192
TM-438-3M	06	09	15	438	146	TM-582-3M	06	09	15	582	194
TM-444-3M	06	09	15	444	148	TM-585-3M	06	09	15	585	195
TM-447-3M	06	09	15	447	149	TM-591-3M	06	09	15	591	197
TM-462-3M	06	09	15	462	154	TM-594-3M	06	09	15	594	198
TM-465-3M	06	09	15	465	155	TM-597-3M	06	09	15	597	199

If you don't see the belt you need – call York!

York also manufactures custom pulleys and complete assemblies
 email: support@york-ind.com web: www.york-ind.com



Cream Colored Engineered Polymer with Fiberglass Cord (RoHS compliant)



BELT NUMBER	WIDTHS			PITCH LENGTH (MM)	NO. OF TEETH	BELT NUMBER	WIDTHS			PITCH LENGTH (MM)	NO. OF TEETH
	6MM	9MM	15MM				6MM	9MM	15MM		
TM-600-3M	06	09	15	600	200	TM-873-3M	06	09	15	873	291
TM-606-3M	06	09	15	606	202	TM-882-3M	06	09	15	882	294
TM-609-3M	06	09	15	609	203	TM-891-3M	06	09	15	891	297
TM-612-3M	06	09	15	612	204	TM-900-3M	06	09	15	900	300
TM-627-3M	06	09	15	627	209	TM-915-3M	06	09	15	915	305
TM-633-3M	06	09	15	633	211	TM-945-3M	06	09	15	945	315
TM-639-3M	06	09	15	639	213	TM-951-3M	06	09	15	951	317
TM-645-3M	06	09	15	645	215	TM-981-3M	06	09	15	981	327
TM-648-3M	06	09	15	648	216	TM-1002-3M	06	09	15	1002	334
TM-654-3M	06	09	15	654	218	TM-1026-3M	06	09	15	1026	342
TM-657-3M	06	09	15	657	219	TM-1035-3M	06	09	15	1035	345
TM-663-3M	06	09	15	663	221	TM-1056-3M	06	09	15	1056	352
TM-669-3M	06	09	15	669	223	TM-1062-3M	06	09	15	1062	354
TM-672-3M	06	09	15	672	224	TM-1071-3M	06	09	15	1071	357
TM-681-3M	06	09	15	681	227	TM-1080-3M	06	09	15	1080	360
TM-684-3M	06	09	15	684	228	TM-1125-3M	06	09	15	1125	375
TM-687-3M	06	09	15	687	229	TM-1155-3M	06	09	15	1155	385
TM-696-3M	06	09	15	696	232	TM-1191-3M	06	09	15	1191	397
TM-711-3M	06	09	15	711	237	TM-1245-3M	06	09	15	1245	415
TM-720-3M	06	09	15	720	240	TM-1263-3M	06	09	15	1263	421
TM-735-3M	06	09	15	735	245	TM-1500-3M	06	09	15	1500	500
TM-738-3M	06	09	15	738	246	TM-1512-3M	06	09	15	1512	504
TM-753-3M	06	09	15	753	251	TM-1530-3M	06	09	15	1530	510
TM-795-3M	06	09	15	795	265	TM-1587-3M	06	09	15	1587	529
TM-804-3M	06	09	15	804	268	TM-1863-3M	06	09	15	1863	621
TM-822-3M	06	09	15	822	274	TM-1926-3M	06	09	15	1926	642
TM-837-3M	06	09	15	837	279	TM-1956-3M	06	09	15	1956	652
TM-843-3M	06	09	15	843	281	TM-2004-3M	06	09	15	2004	668

If you don't see the belt you need – call York!